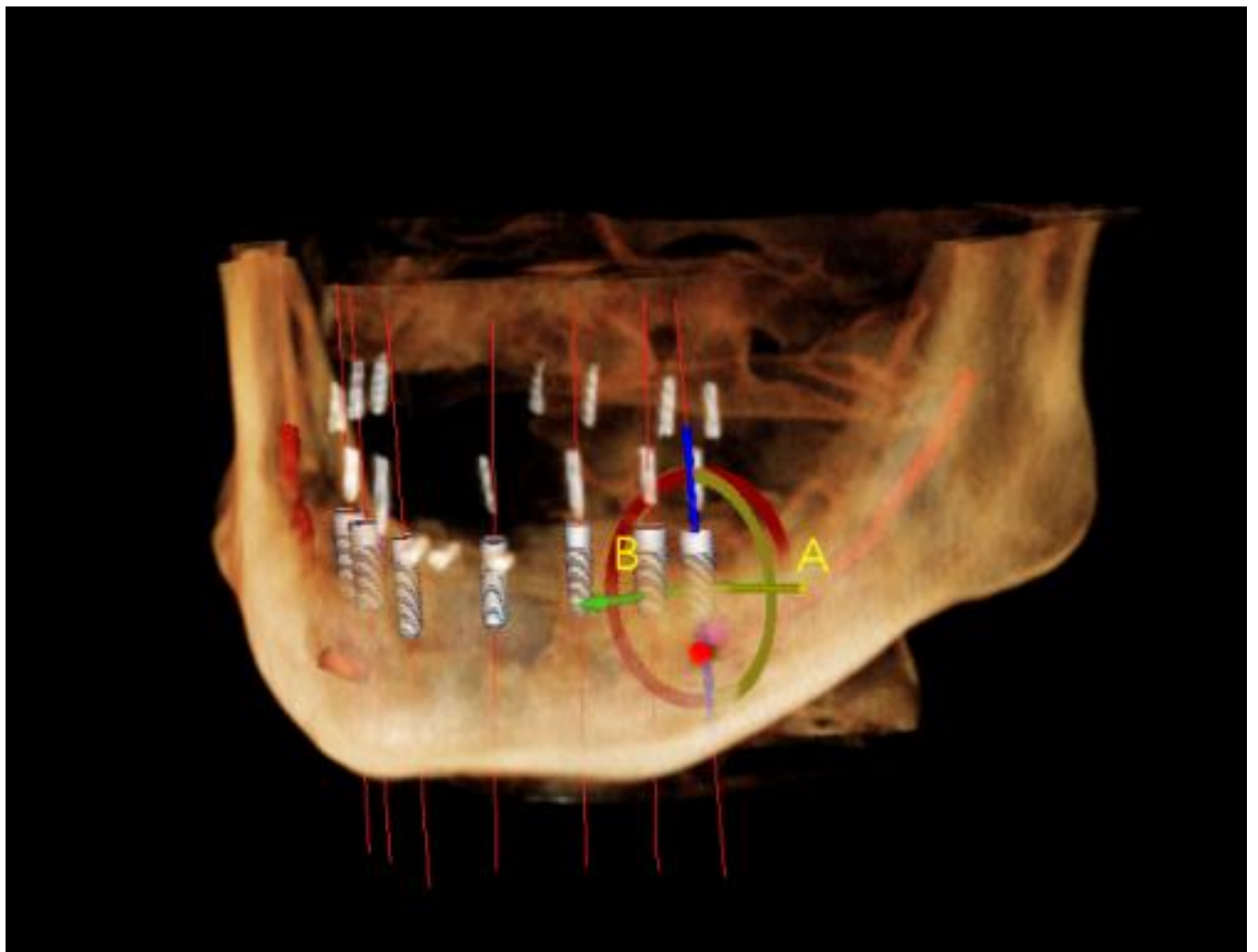


Boston University Henry M. Goldman School  
of Dental Medicine Continuing Education  
*2012 Fall Course Catalog*



Jeffrey W. Hutter, DMD, Med  
Dean and Spencer N. Frankl Professor in Dental Medicine, GSDM

Zhimon Jacobson, DMD, MSD, FACD  
Director, Division of Continuing Education and Clinical Professor, Department of Restorative Sciences/Biomaterials, GSDM

Krista Aronson, BA  
Program Coordinator

Stephania Flores, BS  
Program Coordinator

Dear Colleague:

Welcome to the Division of Continuing Education at Boston University Henry M. Goldman School of Dental Medicine (GSDM). We have an exciting collection of programs planned for the fall semester, combining successful past lectures with new additions to our ongoing curriculum.

We are delighted to introduce the following new courses:

- Risk Management: Areas of Liability for the Practicing Dentist
- Evaluation of Mucosal Pigmented Lesions in the Dental Setting
- Treatment Planning in the 21st Century
- Challenging The Certification Examination Of The American Board Of Prosthodontics
- Essentials of Piezoelectric Surgery: Precise Cutting with Minimal Morbidity

Due to overwhelming interest, we have brought back the following programs:

- Adding Nitrous Oxide to Your Practice
- Predictably Successful Endodontics Level I & II
- Updates in Pediatric Dentistry
- Digital Camera Clinic
- Legal Documentation and Record Keeping for Maximum Care and Suit Avoidance: An Interactive Seminar

We invite you to review our course offerings and, as always, we look forward to seeing you again at Boston University Henry M. Goldman School of Dental Medicine.



## Special Online Program

### Safe & Effective Opioid Prescribing for Chronic Pain

3 CEUs

**Free**

We are pleased to offer an online continuing education training program to satisfy the requirements set by the Board of Registration in Dentistry for renewal of Dental Licenses. We offer this course through Boston University Medical School, Continuing Medical Education.

By connecting to the following website, [www.opioidprescribing.com](http://www.opioidprescribing.com)

For questions about CME, please contact [cme@bu.edu](mailto:cme@bu.edu) or [www.bu.edu/cme](http://www.bu.edu/cme).

To view Boston University's Privacy Policy, please see <http://www.bumc.bu.edu/cme/policies/>.

### Educational Objectives

#### MODULE 1

##### **Opioid Efficacy and Safety; Assessment and Monitoring Tools for Primary Care Settings**

At the conclusion of this activity, participants will be able to:

- Discuss the breadth and quality of evidence for the use of opioids for chronic pain, including current gaps in knowledge.
- Describe appropriate assessment, monitoring and documentation strategies to meet best practice standards and medico-legal requirements to support opioid prescription.

#### MODULE 2

##### **Communicating with Patients About Chronic Opioid Use; Managing Patients with Pain, Psychiatric Co-Morbidity and Addiction**

At the conclusion of this activity, participants will be able to:

- Apply appropriate communication strategies when initiating, managing, and, if necessary, terminating opioids for patients with chronic pain.
- Describe, screen for, and manage potential co-morbidities in chronic pain patients.

#### MODULE 3

##### **Case Study**

At the conclusion of this activity, participants will be able to:

- Apply a practical framework for decision-making on the initiation, maintenance, and discontinuation of opioid analgesics for the treatment of chronic pain.

### **Specialty Treatment Center Observation Program**

3 CEUs (half day), 7 CEUs (full day) \$250 (half day), \$500 (full day)

Dates and times are established on a case-by-case basis by the participants and GSDM Continuing Education.

In this special program, individuals or small groups participate as observers in the post-doctoral treatment centers at Boston University Henry M. Goldman School of Dental Medicine and the Hebrew Rehabilitation Center. The Division of Continuing Education works with the participants to tailor a program that meets their specific needs, including the dates and duration of the visit, the type of dentistry to be observed, and possibly the inclusion of lectures and discussion periods. A GSDM faculty member is assigned to the participants and oversees their activities while they are in the Dental School.

To schedule an appointment, please contact the Division of Continuing Education by phone at 617-638-5656 or email at [busdmce@bu.edu](mailto:busdmce@bu.edu).

---

Anita Gohel, BDS, PhD

Assistant Professor, Department of General Dentistry and Director of Oral Diagnosis & Radiology, GSDM

Mary Ellen Sholes, AAS

Dental Radiology Technologist, Oral Diagnosis & Radiology, GSDM

### **Digital Advanced Radiology**

4 hours, by appointment

4 CEUs

\$300

*Prior radiology certification is required to take this course.*

Digital radiography offers the advantages of instant access, easy transmission, and manipulation of images to optimize brightness and contrast. This course offers an overview of the different types of digital imaging, including the CCD, CMOS, and PSP systems.

Participants will learn sensor placement and infection control procedures while using digital sensors, image enhancement techniques, and tips for troubleshooting errors on digital images. Participants will be able to take intraoral digital images on DXTTR and receive hands-on experience with image enhancement. Participants will observe intraoral and panoramic digital radiography procedures on patients in the radiology patient treatment center.

## **Post-doctoral Course Program**

Selected post-doctoral courses are being offered for dental professionals, providing an opportunity to learn alongside our students in regular post-doctoral classes. At the completion of the course and after fulfilling all of the course requirements, the participant will earn CEU credits and a certificate of completion.

Please call 617-638-5656 for more information regarding this program.

## **Grand Rounds**

Serge Dibart, DDS, DMD

Professor, Department of Periodontology & Oral Biology and Director, Advanced Specialty Education Program in Periodontics, GSDM

Grand Rounds seminars are given once a week under the auspices of the Department of Periodontology. In this seminar series, fully documented patient case histories and examinations are presented. Ideal, actual, and alternate comprehensive treatment plans are discussed.

Semester I & II: September 13, 2012 to April 18, 2013

Duration: 26 Weeks: Sem I & II: Thursdays 8 a.m. to 9 a.m.

26 CEUs

\$3900

## **Implantology Literature Review and Topics**

Zhimon Jacobson, DMD, MSD, FACD and staff

Director, Division of Continuing Education and Clinical Professor, Department of Restorative Sciences/Biomaterials, GSDM

The concept of this course is to learn through reading and group discussion. The participants will be given articles to read prior to the discussion. During the class a participant will be chosen by the instructor to review the literature, requiring all students to be prepared to be called on.

The first hour will consist of literature review and scientific group discussion. The review and discussion ensures that the articles read are fully understood. The second hour will consist of presentations by the lecturer on the topic of literature review.

Semester I & II: September 10, 2012 to April 22, 2013

Duration: 26 Weeks: Sem I & II: Mondays 3 p.m. to 5 p.m.

52 CEUs

\$4550

Please note that each Post-doctoral course has limited attendance offered for the program.

# Special Online Program

George T. Gallagher, DMD , DMSc  
Professor of Oral and Maxillofacial Pathology

Devaki Sundararajan, BDS  
Assistant Professor of Oral and Maxillofacial Pathology



## Evaluation of Mucosal Pigmented Lesions in the Dental Setting

5 Weeks: October 29 to November 30  
\$ 325  
10 CEU's

*This course is an internet-based course*

Participants will be required to review case material and to post comments to a discussion board. Case study and comments can be done at any time convenient for the participant, 24 hours per day. Registered participants are assigned to groups of practitioners of various backgrounds, similar to that of a group practice.

For five weeks, groups are presented with cases involving oral pigmentation. Participants are required to post first their initial thoughts (describing the lesion and their clinical differential diagnosis) and later their overall assessment and recommendations after all information is assembled. Participants will gather relevant articles and discussions from internet sources and post links to those sources for their group. Available texts may also be quoted as sources. Together the instructors and the group members will evaluate the usefulness and reliability of internet sources and practice their skills in the assessment of oral pigmented lesions.

Evaluation of participants will include weekly scoring of their posts by the instructors and scoring of a final case report done individually by each participant. Discussion posts on all case exercises are required for course credit. Instructors will read all postings and provide ongoing feedback to participants.

### Objectives

- Learn the skills necessary to identify and manage common and rare oral pigmented lesions
- Gain skill in searching for pertinent sources of information on the internet
- Practice writing case notes on problem cases to insure they learn to provide proper documentation for the dental record.

Suitable for:

Dentists  
Specialist

Dental Assisting Training Program  
September 17 – November 16, 2012

\$6,000

This unique, nine-week program is designed to prepare individuals to become dental assistants. This program will combine lecture and hands-on classes, which will expose both

current and aspiring dental assistants to all major aspects of the profession. This course is tailored to help participants learn the essential skills and responsibilities required to be a successful member of a dental team. After the completion of our program, participants will be prepared to work in a variety of dental offices. The main objective of our program is to pre-prepare our participants to become functioning and knowledgeable members of a dental team. Participants will be prepared for and provided with the opportunity to become certified in CPR, Radiology, and the Radiation Health and Safety (RHS) and Infection Control (ICE) exams. Students will spend each week in a different dental specialty, learning how to tailor what they've been taught in the lectures to each specific specialty. Rotations include: General Dentistry, Prosthodontics, Periodontology & Implantology, Oral Surgery, Orthodontics, Endodontics, Radiology, and Sterilization.

FACULTY (opposite page, from top left) Louay Abrass, DMD; Krista Aronson, BA; Ishwar Bhatia, BDS, MDS; Michael Blau, DDS, MPH; Cindy Cadoret, RDH, MPH; John Cassis, DDS, DMD; Maria DaSilva, CDA; Kathy Eklund, RDH, MPH; Stephania Flores, BS; Tomas Flores, MD; Rosyln George; Anita Gohel, BDS, PhD; Gurkan Goktug, DDS; Mimoza Haluli, CDA; Kathleen Held, MED; Christopher Hughes DMD, PhD; Zhimon Jacobson, DMD, MSD, FACD; Eda Kerthi; Jeannie Komar; Luz Lebron; Meg Loadholt, RDH, MA; Sandra Morin, DMD; Bruce Robinson, DDS; Mary Ellen Sholes, AAS; Amanda Tili, CDA; and Marieh Vakili, CDA, RDH



Dental Assisting





Donald C. Yu, DMD, MScD  
Adjunct Clinical Instructor,  
Department of Endodon-  
tics, GSDM and Clinical  
Professor and Director,  
Endodontics, Faculty of  
Medicine and Dentistry,  
University of Alberta



### **Predictably Successful Endodontics Level I: Root of the Problem**

Thursday  
September 20  
9 a.m. to 5 p.m.  
7 CEUs  
\$695

This course includes refreshments and lunch.

With its multimedia approach, this course teaches dentists to make consistently accurate diagnoses. Experience new breakthroughs in: applying a modern, sensible rationale for successful endodontics; pathogenesis of pulpal and periradicular diseases; simplified, accurate, precise endodontic diagnosis; and effective and productive emergency treatment.

Course objectives:

- Schilderian Rationale for Endodontics—the triad of success
- How to perform all pulp tests and understand interpretations
- Simplified and practical clinical diagnosis of the pulpal and periradicular diseases
- Pathogenesis of the sequential pulpal degeneration
- The “blood and sweat” of endodontics – anesthesia, pre-treatment, rubber dam, access opening, and effective emergency management of pain

Suitable for:

General dentists  
Specialists

Donald C. Yu, DMD, MScD  
Adjunct Clinical Instructor,  
Department of Endodontics,  
GSDM and Clinical Professor and Director,  
Endodontics, Faculty of  
Medicine and Dentistry,  
University of Alberta



## **Predictably Successful Endodontics Level II: Schilder Warm Gutta-Percha Technique**

Friday & Saturday  
September 21 & 22  
9 a.m. to 5 p.m.  
14 CEUs  
\$1300

This is a hands-on course and includes refreshments and lunch.

This multimedia course will teach you to feel, fill, and drill accessory canals. The course will cover micro CT on a real apex; root canal anatomy; radiographic techniques, including filling accessory canals and dentinal tubules with gutta-percha and the gutta-percha/dentinal wall interface; effective passive sequential serial filling and reaming with envelope of motion to achieve the “look” of cleaning and shaping, including radiographic terminus, working length, maintaining apical patency by finger instruments, calcified, double curve canals, and avoiding ledges using 10 tricks and irrigant system; 10 mechanical and biological objectives; the Schilder warm gutta-percha vertical compaction technique with emphasis on accessory canals and hermetically sealing the portals of exit of the root canal system, including how to down-pack and backpack using the thermal profile and hydraulic pressure of thick sealer; underextension, overextension, underfill, overfill, and coronal versus apical leakage; one-versus multiple-visit endodontics; factor X’s effect on success rate; and how to achieve excellence in endodontics and maintain a profitable income. The course will answer questions about sealants, Thermafil, irrigation systems, coronal leakage, factor X, and one-visit endodontics, among other topics.

Participants will need two anterior teeth, two premolars, and two molars; high speed hand pieces for FG # 2, 4 round bur, and taper diamond bur; bur changers; low speed hand pieces for Gates-Glidden drills #s 2, 3, and 4; and magnifying loupes.

Course objectives:

- Learn Schilder warm gutta-percha technique
- Micro CT on root canal anatomy, radiographic techniques, effective and painless anesthetic technique, access opening, cleaning and shaping, and 3D packing

This course is suitable for:

General dentists  
Specialists

Tomas Flores, MD  
Medical Assistant Program Director  
Hesser College  
Salem, NH



## **Basic Life Support (BLS) Recertification Course for Healthcare Providers**

Monday  
September 24  
9 a.m. to 12 p.m.  
3 CEUs  
\$195

This is a hands-on course and includes refreshments.

This is a recertification course that reviews CPR for patients of all ages (including ventilation with a barrier device, a bag-mask device, and oxygen), relief of a foreign body airway obstruction (FBAO), and use of an automated external defibrillator (AED) in compliance with the new Massachusetts law 234 CMR for the dental industry.

People who currently hold a BLS certification card and who may provide health care to patients in or outside a hospital setting, as well as those required to take a health care provider course for employment, will benefit from this class.

The four-hour program incorporates multiple learning styles: videotape demonstration, instructor led discussions, and peer practice sessions. All participants who successfully complete the course, including the written examination and skills demonstration, will receive a BLS for Healthcare Providers course completion card, which is valid for two years.

Course objectives:

- Describe the links in the AHA Chain of Survival
- Describe the steps of CPR for an adult, child, and infant
- Do CPR using barrier device and bag-mask ventilation
- Perform one and two rescuer CPR for all ages
- Perform rescue breathing mouth to barrier
- Know how and when to use an AED on victims greater than eight years of age
- Perform skills for relief of a FBAO in the responsive and unresponsive victim of all ages

This course is suitable for:

General dentists  
Specialists  
Dental hygienists  
Dental assistants  
Dental technicians  
Office personnel

Christine Outly, AS, CDA  
Technical Advisor,  
Patterson Dental

### **Introduction to EagleSoft**

Tuesday  
September 25  
9 a.m. to 5 p.m.  
7 CEUs  
\$195

This is a hands-on course and includes refreshments and lunch.

This course is sponsored by Patterson Dental.

Patterson Dental's vision was that one day everyone would have the advantage of industry-leading practice management software and digital imaging technology. This technology platform takes all the leading technologies and the dental practice fundamentals and organizes them into a simple management platform. The course will address true integration of imaging, scheduling, and charting technologies as well as patient communication and education.

Course objectives:

- Understanding charting
- Document management- integrated paperless patient files
- Integrated patient education
- The possibilities of encompassing a high level practice/ patient management system

This course is suitable for:

General dentists  
Specialists  
Dental hygienists  
Dental assistants  
Office personnel

Kathy Eklund, RDH MHP  
Director of Occupational Health and Safety  
Patient Safety Advocate  
The Forsyth Institute



***Are those instruments sterile?* Sterility Assurance – a Programmatic Approach to Instrument Processing**

Friday  
September 28  
9 a.m. to 12 p.m.  
3 CEUs  
\$100

Effective management of reusable patient care items is a vital element of an infection control program. This lecture will review the relevant science, guidelines, standards, and recommendations for instrument processing and sterility assurance. Practical strategies and tools for organizing and managing instrument processing will be provided. Topics include:

- Central sterilization designs
- Instrument cleaning
- Instrument packaging
- Sterilization technologies
- Sterilization monitoring
- Storage of sterilized Items
- Preventing and managing sterilization failures

Course objectives:

Upon Completion of the Program Participants will be able to

- Identify the essential elements of a sterility assurance program
- Evaluate the efficiency and effectiveness of a site-specific instrument processing program
- Develop standard operating procedures for a site-specific instrument processing program that are compliant with current CDC guidelines for infection control in dental health-care settings

This course is suitable for:

General dentists  
Specialists  
Dental hygienists  
Dental assistants  
Office personnel  
Dental Technicians

Catherine Sarkis, JD, MBA  
Assistant Professor, Department of Health Policy  
& Health Services Research  
and Assistant Dean for Admissions , GSDM



### **Risk Management: Areas of Liability for the Practicing Dentist**

Monday  
October 1  
9 a.m. to 5 p.m.  
7 CEUs  
\$350

This course introduces general areas of legal liability for the practicing dentist. Through lecture and case discussion, legal concepts and principles including licensure, contract and tort law, informed consent and refusal, patient abandonment, and diversity and discrimination issues are presented.

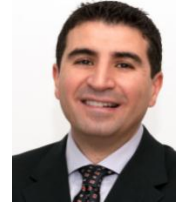
Course objectives:

- Review of Jurisprudence laws and specific changes in Massachusetts licensure regulations
- Presentation of areas of civil and criminal liability
- Discussion of basic legal principles of contract and tort law, intentional torts and negligence, with regard to professional dental practice.
- Discussion of informed consent and refusal including issues of patient autonomy, truth telling, and paternalism
- Presentation of ethical and legal issues associated with treating patients with compromised capacity
- Review of legal issues relating to confidentiality in the context of the doctor/patient relationship, as well as mandated reporting requirements
- Presentation of legal issues relating to discrimination and the obligation to treat patients with infectious diseases

This course is suitable for:

General Dentists  
Specialties  
Dental hygienists  
Dental Assistants  
Dental technicians  
Office Personnel

Louay Abrass, DMD  
Assistant Professor; Director, Post-doctoral Endodontic Patient Treatment  
Center; and Director, Endodontic Microsurgery Course; Department of Endodontics,  
GSDM



## **Endodontic Microsurgery**

Tuesday  
October 2  
1 p.m. to 5 p.m.  
4 CEUs  
\$125

This course includes refreshments.

This comprehensive microsurgery endodontic course will cover the following topics:

- Conventional endodontic success rates and the need for surgery
- Case selection
- Indications and contraindications
- Comparison of traditional apical surgery and microsurgery
- Presurgical evaluation and premedication
- Microsurgical instruments
- Anesthesia and hemostasis
- Soft tissue management
  - Flap design
  - Retraction
  - Suturing
- Osteotomy and apical root resection
- The resected root surface and isthmus
- Retropreparation
- Retrofilling materials and techniques
- Success rate of microsurgery

Course objectives:

- Understand the current principles of endodontic microsurgery and how to use a microscope
- Use state-of-the-art technologies and techniques to improve the success rate of endodontic surgery
- Make diagnoses, select cases, and plan treatment for endodontic surgical cases

This course is suitable for:

General dentists  
Specialists



## **SPECIAL PROGRAM**

Hussam Batal DDS, DMD  
Clinical Director, Department of Oral & Maxillofacial Surgery, Boston Medical Center; Assistant Professor and Director of Pre-Residency Internship Program in Oral & Maxillofacial Surgery, GSDM



### **Implantology and Oral Surgery Update for the General Practitioner**

Friday  
October 5  
9 a.m. to 5 p.m.  
7 CEUs  
\$295 (program only)  
Chatham Bars Inn\*  
Chatham, Massachusetts

This course includes refreshments and lunch and takes place at Chatham Bars Inn, Cape Cod.

The purpose of this course is to provide updates in the area of surgical Implantology and Oral Surgery. The course will be divided into two modules

#### **Implantology Module 1:**

- Immediate vs delayed implant placement in the esthetic zone
- External sinus augmentation technique
- Block graft technique ( ramus and chin area )

#### **Oral surgery Module 2:**

- Management of common oral surgery complications.
- Management of medical emergencies in the dental office

#### **Course Objectives**

- Indications and contraindication of implant placements in the anterior maxillary area
- Discuss different bone grafting procedures and soft tissue procedures to optimize esthetics
- Cover indications and contraindication for external sinus augmentations and block grafts
- Describe different techniques for external sinus augmentation
- Discuss different bone grafting materials
- Describe harvest technique for the chin and ramus graft
- Recognize and properly manage medical and surgical emergency in the dental office
- Understand different medications used for management of medical emergencies

\*The Chatham Bars Inn is offering a special room price for those participating in this weekend's course. Please contact the Inn directly to receive the discounted rate: 800-527-4884.

Just two hours south of Boston sits one of the most sophisticated and luxurious seaside destinations on Cape Cod. Whether you are looking to relax to the tranquil sounds of the ocean or rejuvenate in one of the luxury Spa Suites, the Chatham Bars Inn is the premiere and exclusive New England retreat. Located within walking distance from downtown Chatham, the location is perfect for those seeking a truly memorable escape. Breathtaking scenery, five star dining, and elite shopping are just some of the many attractions you will experience during your stay. With its historic charm and world-class amenities, the Chatham Bars Inn is the standard in refined leisure.

This course is suitable for:  
General dentists  
Specialists



Dr. Antonio H.C. Rodrigues CD., MScD  
Associate Professor, Catholic University of Minas Gerais School of Dentistry;  
Clinical Coordinator, graduate division of Fixed Prosthodontics and Implant  
Dentistry; Adjunct Associate Professor, Division of Post-doctoral Prosthodontics,  
GSDM.



## **Treatment Planning in Conventional Restorative Dentistry and Implant Prosthetics: A Comprehensive Approach**

Wednesday  
October 10  
9 a.m. to 1 p.m.  
4 CEUs  
\$125

This course includes refreshments.

Treatment planning is commonly considered by dentists as one of the most important phases of any dental treatment and vital for achieving successful long-term results. Despite its importance, the process of making a diagnosis and planning a treatment in restorative dentistry is somewhat controversial and has frequently been associated with confusion. Not only has it become a vague goal but also a difficult skill for dental students and dentists to acquire.

This clinically oriented lecture presents guidelines for treatment planning in restorative dentistry. It includes every phase of diagnosis and treatment planning with its most important subjects and presents a philosophy for a systematic and consistent manner to diagnose and solve clinical problems. The student of dentistry in every level, plus the general practitioner, and all other specialists will certainly benefit from the information discussed in this lecture since it will definitively improve the communication and relationship between the specialties.

Course objectives:

- Participants will learn:
- Controversy and confusion in treatment planning
- Rationale for the establishment of a methodology
- Old vs. new treatment concepts
- Phases of diagnosis and the fact collecting process
- Organization and interpretation of collected information
- Developing a treatment plan
- Obtaining informed consent from the patient

This course is suitable for:

General Dentists  
Specialists

Dr Anita Gohel, BDS, PhD  
Assistant Professor, Department of General Dentistry and Director of Oral Diagnosis & Radiology, GSDM



Mary Ellen Sholes, AAS  
Dental Radiology Technologist, Oral Diagnosis & Radiology, GSDM  
Arvi Duka, DMD Clinical Instructor of General Dentistry, GSDM



Eden Mogos Clinical Coordinator, Oral Diagnosis & Radiology, GSDM

### **Radiology Certification Program for the Dental Assistant Part I: Lecture\* and Part II: Clinic**

Friday  
October 12 and Saturday, October 13, Sunday, October 14 or Saturday, October 20  
10 a.m. to 6 p.m.  
12 or 16 CEUs  
\$225

This is a hands-on course and includes refreshments and lunch on the day of the lecture. Please choose a clinical session when you register as treatment centers have limited space. Participants must be at least 18 years of age.

This is a review course dealing with the basic concepts of oral and maxillofacial radiology. The course covers the historical background of X-rays, radiation physics, biology, radiation protection, infection control, dental X-ray machine components, dental film, digital receptor, anatomical landmarks, bitewings, periapical exposures, processing and mounting films, and identifying and correcting exposure or processing errors. Participants will expose, process, mount, and evaluate the radiographs on manikins.

Clinic A: Saturday, October 13, 7:30 to 11:30 a.m.

Clinic B: Saturday, October 13, 10 a.m. to 2 p.m.

Clinic C: Sunday, October 14, 7:30 to 11:30 a.m.

Clinic D: Sunday, October 14, 10 a.m. to 2 p.m.

Clinic E: Saturday, October 20, 8 a.m. to 4 p.m.\*\*

In this four-hour clinic session, participants will have taken the written exam; taken satisfactory periapical, bitewing, and occlusal film; properly processed film; mounted and labeled radiographs; become familiar with dental panoramic and cephalometric radiographs; and self-analyzed radiographic technical and processing errors.

This course meets the requirements of the Commonwealth of Massachusetts and New Hampshire Boards of Dentistry. This course is also an excellent review for dental assistants planning to take the Dental Assisting National Board (DANB) to become a Certified Dental Assistant (CDA).

\* Part one is also available online.

\*\*All New Hampshire residents who plan to work in New Hampshire should register for Clinic E.

This course is suitable for:  
Dental Assistants

Zhimon Jacobson, DMD, MSD, FACD  
Director, Division of Continuing Education and Clinical Professor,  
Department of Restorative Sciences/Biomaterials, GSDM



David Cottrell, DMD

Past Associate Professor and Director of Residency Training,  
Department of Oral & Maxillofacial Surgery, GSDM



Hussam Batal, DDS, DMD

Clinical Director, Department of Oral & Maxillofacial Surgery, BMC; Assistant Professor and  
Director of Pre-Residency Internship Program in Oral & Maxillofacial Surgery, GSDM



Hideo Yamamoto, DMD

Clinical Associate Professor, Department of Restorative Sciences/Biomaterials and Supervisor,  
Postgraduate Prosthodontics Laboratory, GSDM



Gurkan Goktug, DDS

Assistant Professor, Department of Restorative Sciences/Biomaterials  
GSDM



Serge Dibart, DDS, DMD

Professor, Department of Peridontology & Oral Biology and Director, Advanced Specialty Education  
Program in Periodontics, GSDM



### **Paradigm Change in Implant Dentistry**

Monday & Tuesday

October 15 & 16

9 a.m. to 5 p.m. (Monday) 9 a.m. to 12 p.m. (Tuesday)

10 CEUs

\$900

*This is an international participation course for Korean dentists.*

The course includes refreshments and lunch on the first day and refreshments on the second day.

Since the introduction of modern Implantology in 1982, researchers, clinicians, and implant manufacturers have modified their knowledge base and created an exciting field in dental medicine that is one of the fastest growing disciplines in dentistry today. The course will review the evolution of implant dentistry and survey the most recent information in treatment planning, surgery, and restoration of dental implants.

Course objectives:

- Treatment plan a typical case
- Become familiar with the implantology team concept
- Learn step-by-step typical surgical procedures
- Understand different concepts and materials for site preparation for dental implants
- Learn advanced surgical and prosthodontic solutions

Suitable for: General Dentists, Specialists

Marieh Vakili, CDA, RDH



## **New Advancements in Dental Hygiene**

Tuesday  
October 16  
9 a.m. to 5 p.m.  
7 CEUs  
\$195

This course includes refreshments and lunch.

Many new products and procedures have been introduced to dental hygiene practice recently. New studies show the need to modify our techniques and selection of material and equipment in our daily practices.

Dental hygienists should be aware of all advancements, advantages, and disadvantages of the products and procedures that are being marketed. This course will review classic procedures as well as the literature to validate the benefit and value of outcome.

Course objectives:

- Identify different types of topical fluoride application
- Learn significance of using topical fluoride in adults and adolescents
- Learn different available electric tooth brushes and their comparison with the manual toothbrush
- Be familiar with tooth paste abrasiveness and the possible effect on gingival recession
- Learn early diagnosis for gingival recession

This course is suitable for:

Dental hygienists  
Dental assistants




# Updates in Orthodontics

**Wednesday  
October 17  
7 CEUs  
\$ 600**

*This is an international participation course for Korean dentists.*

This course includes refreshments and lunch.

Upon completion of this seven-credit program, participants will learn:

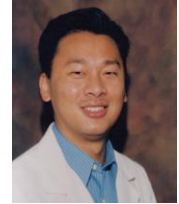
- |               |  |   |
|---------------|--|---|
| 8:30–10 a.m.  | Bidimensional technique<br><b>Victor Dietz DMD, MSD</b><br>Past Clinical Director, Advanced Orthodontic Training Program, GSDM   |   |
| 10–10:30 a.m. | <b>Morning break</b>   |   |
| 10:30–noon    | Assessing growth status and treatment timing<br><b>Mohamed Masoud DMD, CAGS</b><br>Department of Orthodontics, GSDM  |  |
| noon          | <b>Lunch break</b>   |   |
| 1–2:30 p.m.   | Assessing the transverse dimension with CBCT<br><b>Leslie Will, DMD, MSD</b><br>Chair and Anthony A. Gianelly Professor in Orthodontics and Director, Advanced Specialty Education Program in Orthodontics, GSDM |  |
| 2:30–3 p.m.   | <b>Coffee Break</b>  |   |
| 3–4:30 p.m.   | Special uses of orthognathic surgery<br><b>Leslie Will, DMD, MSD</b><br>Chair and Anthony A. Gianelly Professor in Orthodontics and Director, Advanced Specialty Education Program in Orthodontics, GSDM         |  |



Dr. Frederick Hains, FAGD  
Clinical Assistant Professor,  
Department of General  
Dentistry and Course Direc-  
tor, Treatment Planning and  
Patient Management, GSDM



Sein Siao, BDS, DMD  
Clinical Assistant Professor,  
Department of General  
Dentistry, GSDM



### **Introduction to CEREC**

Thursday  
October 18  
9 a.m. to 5 p.m.  
7 CEUs  
\$595

This is a hands-on course and includes refreshments and lunch.

This course is sponsored by CEREC®.

This is a basic course for the beginner and those interested in learning about this CAD/CAM technology. Participants will learn how to do simple restorative procedures such as crowns and onlays, as well as the preparation styles that work best for all ceramic restorations and CEREC® restorations in particular. The course will offer hands-on experiences in basic production of a restoration for a single tooth.

Course objectives:

- Become familiar with the CEREC® system
- Learn the preparation style that is most successful with CEREC®
- Decide if CEREC® is appropriate for your practice

This course is suitable for:

General dentists  
Specialists

Andre Hashem, DDS, DMD  
Clinical Associate Professor, Department of  
Restorative Sciences/Bio-  
materials, GSDM



## **Integrating Veneer Restorations in Anterior Esthetics**

Friday  
October 19  
9 a.m. to 12 p.m.  
3 CEUs  
\$100

This course includes refreshments.

There has been heightened demand from the general public for esthetic treatment of anterior teeth that surpasses the simple and traditional restorative techniques.

Dentists are faced with the challenge of developing and using new restorative treatment modalities that are conservative, yet deliver superior outcomes that meet the changing demands of our patients.

This course will discuss the guidelines for the restoration of anterior teeth with porcelain veneer restorations from the diagnostic phase through the final placement.

The course will review simple and complex anterior situations with comprehensive treatment planning, including diagnostic wax-up, and diagnostic mock-ups to deliver a predictable treatment outcome.

### **Course Objectives:**

- Discuss the concepts that govern veneer restorations
- Learn the different preparations designs for veneer restorations
- Become more familiar with the thought process involved in treatment planning complex anterior veneer cases.
- Observe multiple cases with a combination of different modality of restorative treatment from treatment planning through completion

This course is suitable for:

General dentists

Specialists

Christopher V. Hughes, DMD, PhD  
Associate Professor and Chair, Department of Pediatric Dentistry, GSDM



Tuesday  
October 30  
9 a.m. to 12 p.m.  
3 CEUs  
\$100

### **Update in Pediatric Dentistry**

This course includes refreshments.

All dentists will benefit from the confidence and knowledge of how to treat the child patient. This course reviews the fundamentals of pediatric dental practice, including behavior management, pulp therapy for primary teeth, and prevention of dental caries in children. Participants will also hear an update on early childhood caries (ECC) and its prevention.

Course objectives:

- Learn to encourage good oral hygiene in young patients
- Learn pulp therapy in primary and young dentition
- Learn behavior management techniques
- Perform contemporary caries risk assessment in primary and young dentition

Suitable for:  
General Dentists  
Specialists

John Ictech-Cassis, DMD  
Clinical Professor,  
Department of Restorative  
Sciences/Biomaterials;  
Director, Advanced  
Education in General  
Dentistry and Postgradu-  
ate Operative & Esthetics  
Program, GSDM



Hideo Yamamoto, DMD  
Clinical Associate Professor, Department of  
Restorative Sciences/  
Biomaterials and  
Supervisor, Postgraduate  
Prosthodontics Labora-  
tory, GSDM



### **Success and Failures in Restorative Dentistry**

Wednesday  
October 31  
9 a.m. to 5 p.m.  
7 CEUs  
\$195

This course includes refreshments and lunch.

This course provides a thorough analysis and exploration for success predictability of dental techniques, clinical procedures, and dental materials used in restorative dentistry. There will be extensive review of clinical cases from amalgam and composite restorations to implant crowns, including factors that influence their success and failure.

#### **Objectives:**

- Clinical principles that determine the success of amalgams and bonded restorations
- Predictability of treatment of periodontally-involved teeth
- Predictable preparations for laminate veneers
- Success and failure scenarios of porcelain-fused-to-metal crowns and ceramic crowns
- Principles of tooth preparations and impression making
- Esthetic considerations for implant-supported crowns
- Restorations of endodontically treated teeth: A comparison of systems and techniques
- Periodontal and esthetic considerations of fixed restorations
- Analysis of failures on implant placements and restorations

This course is suitable for:

General dentists  
Specialists

Bahram Ghassemi DMD, MScD  
Associate Professor,  
Department of Orthodontics,  
Tufts University School of  
Dentistry

Sara Ghassemi DMD, CAGS  
Private Practice, Boston, MA



### **Orthodontics for Dental Assistants and Hygienists**

Friday  
November 2  
9 a.m. to 5 p.m.  
7 CEUs  
\$195

This course includes refreshments and lunch.

This course is designed to introduce the fundamental and clinical principles of Orthodontics to dental assistants and hygienists. Case studies and interactive exercises will be used to explore both fundamental and clinical topics.

Upon completion of this program, participants will be able to:

- Assist an Orthodontist in a multidisciplinary group practice
- Diagnose and discuss common orthodontic problems
- Learn basic terms used by an orthodontic professional
- Learn about components of Braces
- Describe and utilize orthodontic tools and pliers
- Learn how to prepare for various orthodontic procedures
- Describe and discuss orthodontic appliances
- Handle orthodontic emergencies

Suitable for:  
Dental Assistants  
Dental Hygienists

John McManama, DDS  
Professor, Department of  
General Dentistry, GSDM



## **Troubleshooting Posterior Composites in 2012**

Wednesday  
November 7  
1 p.m. to 5 p.m.  
4 CEUs  
\$125

This course includes refreshments.

Amalgam was the most important restorative material of the twentieth century. Will composite resin be the most important restorative material of the twenty-first century? The secret to making the direct posterior composite restoration an important part of your practice is a careful combination of case selection, decision making, and execution. How a dentist uses a material is much more important than what material he or she uses.

This practical course will address the following topics:

- Diagnosing and treating insipient lesions
- Old vs. new principles of preparation design
- Deep caries, affected dentin, indirect and direct pulp capping
- Bonding agents (Which generation is the most logical choice?)
- Comparison of easy-to-use and predictable matrix systems
- Flowable, packable, low shrinking, and hybrid composites
- Placement techniques and polymerization stress control
- Finishing and polishing in a hurry
- Unconventional restorations
- Logical treatment planning in 2012 (When not to use a composite!)

Done well, posterior composite resins can and should be a vital part of everyone's practice in 2012

This course is suitable for:

General Dentists  
Specialists

Donald Sherman, DMD  
Visiting Faculty, GSDM and  
Seminar Series Speaker,  
American Dental Association



## **Digital Photography and Digital Imaging: At Home and in the Office**

Thursday  
November 8  
9 a.m. to 5 p.m.  
7 CEUs  
\$250

This is a hands-on course and includes refreshments and lunch.

This course is sponsored by PhotoMed®.

### ***Morning Session – Digital Photography and Digital Imaging At Home and in the Office (Lecture)***

This informative and entertaining multi-media presentation will help dentists and their staff understand and use digital cameras and digital imaging to improve communication with their patients and greatly improve documentation of clinical treatment records. Learning how to use this technology at home will considerably shorten the learning curve for office use, and can also enhance your vacation photographic experience. This course will show you how digital cameras, digital x-ray equipment, intra-oral cameras and scanners can all create dental images. Learn how to set up a stunning reception room video display of your best cases, and how to promote your skills.

### ***Afternoon Session – Digital Camera Workshop***

At this workshop, you will learn how to obtain better images with the digital camera you own or the cameras we provide. If you already have a digital camera, this a chance for you or your staff to learn how to take portrait, smile, and simple tooth images. However, if you do not use the camera we provide, you must know how to make adjustments and settings on your camera. After taking images, you will have a chance to see your images projected, with comments provided on improving technique.

\*Cheek retractors will be provided.

\*\*Bring the user guide for your own camera.

Attendees will be introduced to methods for:

- Using digital images for patient consultations and submission of x-rays to insurance companies
- Selecting a digital camera, scanner and printer. Which are best for home use and which for office use – with brand name recommendations
- Using a scanner to digitize your current 35 mm slides or negatives, dental film x-rays and office documents
- Importing digital images into Microsoft Word letters, newsletters, patient brochures, web sites and e-mail, and your current office management software
- Cropping, adjusting and cataloguing digital images with inexpensive off the shelf software for home use that can also be used in the office, and using specialized dental imaging software designed for office use.

This course is suitable for:

General dentists  
Specialists  
Dental Hygienists  
Dental Assistants  
Office personnel  
Dental Technicians



Gurkan Goktug, DDS  
Clinical Assistant Professor, Department of  
Restorative Sciences/Bio-  
materials and Director,  
Prosthodontics Residents  
Laboratory, GSDM



### **Make Yourself Marketable: Learn How to Fabricate Provisional Restorations**

Wednesday  
November 14  
9 a.m. to 5 p.m.  
7 CEUs  
\$195

This is a hands-on course and includes refreshments and lunch.

This course is designed to familiarize dental assistants and hygienists with the different techniques and methods of fabricating provisional crowns. This course will address the advantages and disadvantages of each technique and its clinical applications.

At the end of this course, the attendees will understand the following provisional techniques for appropriate clinical use:

- Use of preformed temporary crowns
- Vacuum shell technique
- Indexing technique
- Block-temp technique

This course is suitable for:

General dentists  
Dental hygienists  
Dental assistants

Kasumi Barouch, DMD, PhD  
Clinical Assistant Professor, Department of Periodontology & Oral  
Biology, GSDM



### **Suture Techniques and Soft Tissue Engineering**

Thursday  
November 15  
9 a.m. to 5 p.m.  
7 CEUs  
\$395

This is a hands-on course and includes refreshments and lunch.

Soft and hard tissue esthetics around the teeth are a vital part of periodontal surgery. This course will focus on how suture techniques and soft tissue engineering can affect the outcome of periodontal procedures, including implant-supported prostheses. The course will also address the use of periodontal plastic surgery techniques for optimal esthetic outcome and facilitation of oral hygiene.

Course objectives:

- To perform basic suturing techniques for optimum esthetic results
- To learn about wound healing and physiological considerations at the cellular molecular clinical level
- To understand the basics of soft tissue engineering
- To review suturing materials and instrumentation

This course is suitable for:

General dentists  
Specialists

Dr. Frederick Hains, FAGD  
Clinical Assistant Professor,  
Department of General  
Dentistry and Course Director, Treatment Planning and  
Patient Management, GSDM



## **Treatment Planning in the 21st Century**

Monday  
November 19  
9 a.m. to 1 p.m.  
4 CEUs  
\$ 125

This course will look at a systematic approach to the evaluation of a patient's dental needs and wants. It will also focus on the development of an organized approach to address the patients list of problems that evolves from a systematic review of their comprehensive examination data and interview.

### Course Objectives:

- Learn a decision making process for treatment decision involving compromised dentition for restoration or replacement with implant
- Learn how to sequence and phase therapy so that the end treatment is optimal for the patient.
- Learn how to boost earnings potential and professional satisfaction by learning how to stage complex treatment plans.
- Learn about the Digital technology link in treatment planning

This course is suitable for:

General dentists  
Specialists  
Dental Hygienists

Gurkan Goktug, DDS  
Clinical Assistant Professor, Department of  
Restorative Sciences/Bio-  
materials and Director,  
Prosthodontics Residents  
Laboratory , GSDM



## **All You Need to Know About Implant Supported Overdentures**

Wednesday  
November 28  
9 a.m. to 12 p.m.  
3 CEUs  
\$100

This course includes refreshments.

The literature and clinical experience indicate that the implant-supported prosthesis provides predictable results with improved stability and function and a high degree of satisfaction as compared with conventional removable dentures. Clinical studies in the literature in which implants were used in the anterior to the foramen in the mandible indicate high success rates for these implants. These data indicate that implant-supported prostheses should be considered in planning treatment for the fully edentulous patients.

### **Course Objectives**

- To assess intraoral space
- To assess the number of implants that are needed
- To know the location of implants in the edentulous mandible and maxillae
- To understand the need for distance between the implants
- To demonstrate bar versus stud attachment, advantages and disadvantages
- To use occlusal scheme of implant-supported complete dentures
- To perform the modification of occlusal surface of the denture to prevent excessive wear

Suitable for:  
General Dentists  
Specialists

Brian Miller, DDS  
Private Practice, Concord and  
Newton, MA  
Clinical instructor and Visiting Faculty,  
GSDM



Bahram Ghassemi DMD, MScD  
Associate Professor,  
Department of Orthodontics,  
Tufts University School of  
Dentistry



Sharona Dayan DDS, DMSc  
Private Practice, Weston, MA



Sara Ghassemi DMD, CAGS  
Private Practice, Boston, MA



### **Orthodontic Treatment in Young and Adult Patients and Interdisciplinary Treatment Planning**

Thursday & Friday  
November 29 & 30  
9 a.m. to 5 p.m.  
14 CEUs  
\$390

This interactive course will give general dentists and specialists the opportunity to diagnosis and treatment plan common orthodontic problems in children and adults. There will be a presentation of the Recognition and Diagnosis of Malocclusions to give each participant a basic understanding of Orthodontics. Comprehensive treatment plans for patients in need of implants and fixed restorations will be discussed. The role of orthodontics in developing predictable and esthetic results will be highlighted. The instructors will provide pictures (intraoral and facial), study models, radiographs as well as treatment goals. The participants will team up to develop a treatment plan. The instructors will then reveal the actual treatment rendered and engage in discussions with participants about the cases.

#### Course goals:

- To give participants a basic understanding of occlusion
- To allow participants an interactive learning experience of actual patients who are in need of implants, prosthodontics and periodontal treatment.
- Describe and discuss removable orthodontic appliances
- Review timing of treatment
- Learn how to handle patient selection for Invisalign
- Learn basic criteria used in prevention of orthodontic problems

This course is suitable for:  
General dentists  
Specialists

Henrietta Lerner, DMD  
Private Practice,  
Baden-Baden, Germany



### **Road Map to Planning and Grafting in Complex Implant Cases**

Monday  
December 3  
9 a.m. to 12 p.m.  
3 CEUs  
\$ 100

This course includes refreshments.

Ultimate esthetic, health, and function in patients with bone defects can be achieved by applying evidence based knowledge. Consideration should be given to soft and hard tissue healing processes, along with criteria for selection of appropriate augmentation and membrane choices. The time schedule for immediate implant placement, along with, provisional and permanent restorations will be discussed in this course.

Course objectives:

- Learn how to analyze esthetic and function in complex cases
- Learn how to select graft materials and membranes
- Learn about fundamentals immediate placement
- Learn about fundamentals of immediate loading
- Learn about temporary restorations, philosophy, and design
- Learn about final restoration, philosophy, and design

This course is suitable for:

Specialists

General dentists

Steven M. Morgano, DMD  
Professor, Department of Restorative Sciences/ Biomaterials, GSDM  
Director of Post-Doctoral Prosthodontics at GSDM



Faysal Succaria DMD, MSD, CAGS  
Past Department Chair and Director of the Post-doctoral Program in Prosthodontics at  
Boston University Institute for Dental Research & Education, Dubai, UAE



John Agar DDS, MA  
Professor and Director, Post-doctoral Program in Prosthodontics  
University of Connecticut School of Dental Medicine



### **Challenging the Certification Examination of the American Board of Prosthodontics**

Monday & Tuesday  
December 3 & 4  
9 a.m. to 5 p.m.  
14 CEUs  
\$ 390

This course will review fundamental principles of the specialty of prosthodontics. In addition a former Board examiner will provide insight into the structure of the certification examination of the American Board of Prosthodontics, upcoming changes in the examination requirements, and what is expected of candidates. A recently certified diplomate will review his experiences with the examination process. This new diplomate will then present his patient presentations to the audience and will receive two mock oral examinations.

The primary objective of this course is to help prepare candidates for challenging the certification examination of the American Board of Prosthodontics.

At the completion of this course, the participant will:

- Possess foundation knowledge in:
  - Fixed prosthodontics
  - Removable prosthodontics
  - Implant prosthodontics
  - Occlusion
  - Dental materials
- Be familiar with the structure and format of all parts of the certification examination of the American Board of Prosthodontics
- Be able to effectively select appropriate cases for the patient presentations
- Have a thorough knowledge of all required documentation for the patient presentations
- Be able to structure patient presentations for the examination
- Be familiar with the oral examination process

This course is suitable for:

General Dentists

Specialties

Catherine Sarkis, JD, MBA  
Assistant Professor, Department of Health Policy  
& Health Services Research  
and Assistant Dean for Admissions , GSDM



## **Legal Documentation and Record Keeping**

Thursday  
December 6  
9 am to 5 p.m.  
7 CEUs  
\$350

Records are the key to continued care for the patient and the backbone to any defense in a malpractice suit. This course makes the dentist aware of the role and importance of dental records and teaches what to record and which forms are vital for a healthy practice. At the end of the course, participants will be able to put in place a risk management system as well as conduct an audit of their present risk management status and isolate and correct the weaknesses.

### Course objectives:

- Enhance doctor/patient communication
- Optimal use of informed consent
- Dismissal of the “problem patient”: recording the how and why
- Use of key words and phrases
- Discussion of malpractice avoidance
- Presentation of the structure of a lawsuit
- Description of the potential plaintiff: the “red flag”
- When treatment is completed: what to do?
- Use of the record as “preventative management”
- How long should records be kept?
- Required record content
- Inclusion of the patient’s complete health history

This course is suitable for:

General Dentists  
Specialties  
Dental hygienists  
Dental Assistants  
Dental technicians  
Office Personnel



Eleni Kanasi DDS, PhD, MS, CAGS  
Assistant Professor  
General Dentistry Department, GSDM



Enrique Muller DMD, MSc, CAGS  
Clinical Assistant Professor  
General Dentistry Department, GSDM



### **Essentials of Piezoelectric Surgery: Precise Cutting with Minimal Morbidity**

Friday  
December 7  
9 a.m. to 12 p.m.  
3 CEUs  
\$100

This course includes refreshments.

General dentists and specialists can benefit from this safe surgical technology, which has a plethora of applications in dental clinical practice. Advantages of the Piezoelectric surgery include precise and selective cuts with no nerve/soft tissue damage, fast healing due to less collateral tissue damage, and good hemostasis. The technique is easily accepted by the patient and the learning curve is short for the clinician.

This course will review the fundamentals of Piezoelectric surgery, clinical advantages for general dentists and specialists, and new surgical concepts. This course will introduce participants to the basics techniques of Piezoelectric surgery through actual clinical cases. Case reviews will exemplify how to use the technique for tooth extraction, esthetic crown lengthening, alveolar bone corticotomy for accelerated orthodontic movement, canine exposure, ridge expansion (ridge split) and sinus elevation (internal and external technique).

Course objectives:

- To discuss the specifics of the Piezoelectric technology and its advantages.
- To learn how to use Piezoelectric surgery for tooth extractions, esthetic crown lengthening, ridge expansion, sinus elevation.
- To learn about new applications of Piezoelectric surgery including canine exposure and alveolar bone corticotomy for accelerated orthodontic movement.

This course is suitable for:

General Dentists  
Specialists

Ronni Schnell DMD  
Clinical Professor  
General Dentistry Department, GSDM



## **Incorporating Root Attachment-Retained Overdentures into Your Practice**

Wednesday  
December 12  
9 a.m. to 5 p.m.  
7 CEUs  
\$ 695

*This course requires a kit which participants will receive prior to the course free of charge*

Anchoring an overlay denture to retained roots enhances denture stability and comfort while preserving alveolar bone. It also provides the patient with the security of retention. This lecture will focus on diagnosis, space analysis, and attachment selection.

Learning Objectives:

- Diagnose preexisting dentures and conditions
- Learn space analysis
- Understand root abutment and attachment selection
- Develop follow-up care and maintenance

### **Hands-on :**

Start-to-finish techniques for both the indirect fabrication and direct placement of precision and semi-precision attachment used in overlay denture prostheses will be demonstrated and performed by participants.

Learning Objectives:

- Prepare overlay abutments
- Create a space analysis for attachment selection
- Fit, align, and cement ERA attachments
- Learn how to retrofit a denture to an attachment
- Activate retention in a processed denture
- Make an impression for a semi-precision attachment

Participants must bring a high speed handpiece, a slow speed handpiece (both latch angle and straight nose attachments), loupes / protective eyewear, heavy duty wire cutter, mirror and explorer with perio probe, locking college pliers

This course is suitable for:

General Dentists  
Specialists

Richard D'Innocenzo, DMD, MD  
Clinical Associate Professor  
and Clinical Director, De-  
partment of Oral & Maxil-  
lofacial Surgery, GSDM



Steven J. Bookless, DMD  
Clinical Assistant Professor, Department  
of Oral & Maxillofacial  
Surgery, GSDM



### **Adding Nitrous Oxide to Your Practice**

**Day:** Thursday & Friday

**Date:** December 13 & 14

**Time:** 8 a.m. to 5 p.m.

**CEU:** 16 CEUs

**Cost:** \$2,000

#### ***This course has a CPR Certification Prerequisite***

This is a hands-on course and includes refreshments and lunch.

A textbook and short pre-test will be mailed to all participants prior to the course.

This two-day course is designed specifically to introduce the art of sedation to the dental practitioner and staff. A comprehensive review of inhalation, oral, and parental sedation techniques, with emphasis on use of nitrous oxide sedation, will be provided. Material presented in this course will lay the basic framework for enabling the participants to satisfy licensure requirements of the Massachusetts State Dental Board for use of nitrous oxide in the dental office.

Day one includes an introduction to pain and anxiety control in dentistry, review of pharmacological agents and techniques, and information on nitrous oxide sedation, including: patient evaluation, risk assessment, armamentarium and monitoring equipment, technique, abuse potential, occupational hazards, and complication management.

Day two includes hands-on clinical training sessions in nitrous oxide sedation and observing and assisting clinical cases with combination sedation.

#### **Course objectives:**

- Describe the anatomy and physiology of the respiratory, cardiovascular, and central nervous systems as they relate to the above techniques
- Describe the components and function of inhalation sedation equipment
- List the indications, contraindications, advantages, and disadvantages of inhalation sedation
- List the complications of inhalation sedation and discuss the prevention, recognition, and management of these complications
- Administer inhalation sedation to patients in a clinical setting in a safe and effective manner

This course is suitable for: General dentists, Specialists

**Save the Date  
Cruise & Learn Caribbean Feb 17-24, 2013**

John Ictech-Cassis, DMD  
Clinical Professor,  
Department of Restorative  
Sciences/Biomaterials;  
Director, Advanced  
Education in General  
Dentistry and Postgraduate Operative & Esthetics  
Program, GSDM



Sandra Morin, DMD, CAGS  
Clinical Assistant Professor

**PREDICTABLE APPROACHES TO MULTIDISCIPLINARY TREATMENT**

9 CEUs

**Module 1:** Treatment Planning

**Module 2:** Periodontal Therapy

**Module 3:** Restorative



Day	Date	Port	Arrive	Depart
0	17 Feb 2013	<u>Fort Lauderdale, Florida, US</u>		4 p.m.
1	18 Feb 2013	At Sea		
2	19 Feb 2013	<u>Grand Turk, Turks and Caicos</u>	8 a.m.	3 p.m.
3	20 Feb 2013	San Juan, Puerto Rico	1 p.m.	8 p.m.
4	21 Feb 2013	<u>Philipsburg (St. Maarten), AN</u>	8 a.m.	3 p.m.
5	22 Feb 2013	At Sea		
6	23 Feb 2013	<u>Half Moon Cay, Bahamas</u> <sup>1K</sup>	8 a.m.	4 p.m.
7	24 Feb 2013	<u>Fort Lauderdale, Florida, US</u>	7 a.m.	

**Save the date**

**29th Annual Oral Health & HIV Symposium  
Friday March 8, 2013**

**Holiday Inn  
55 Ariadne Rd  
Dedham, MA 02026**



6 CEUs



Dr. Ana Karina Mascarenhas

Caries Prevention for the 21<sup>st</sup> Century



Dr. Barbara Greenberg

Expanded Role for Healthcare Providers:  
Screening for HIV, Diabetes, and Heart Disease



Ms. Meg Loadholt

Latest Information in Infection  
Control in Dental Office



Dr. Andrew Salama

HPV and Oral & Maxillofacial  
Cancer Detection and Treatment



Dr. David Reisburg

Maxillofacial Prosthesis as Part of Cancer Treatment

## Save the Date

Anita Gohel, BDS, PhD  
Associate Professor, Department of General Dentistry and  
Director of Oral Diagnosis & Radiology, GSDM



Mary Ellen Sholes, AAS,  
Dental Radiology Technologist  
Oral Diagnosis & Radiology, GSDM



9 CEUs

**Module 1:** Innovations in Digital Radiology

**Module 2:** Cone Beam CT: Contemporary Breakthroughs and  
Current Trends



**Module 3:** Unraveling the Ghosts of Panoramic Radiographs

## Cruise and Learn: Caribbean—April 6 to 13, 2013

### Cruise Itinerary

DATE	PORT OF CALL	ARRIVE	DEPART
Saturday, April 6	Miami, Florida	-	4:30 p.m.
Sunday, April 7	At Sea Cruising Lectures 9 a.m.–noon; 1:30 p.m.–4:30 p.m.	-	-
Monday, April 8	San Juan, Puerto Rico	3 p.m.	10 p.m.
Tuesday, April 9	Philipsburg, St. Maarten	9 a.m.	6 p.m.
Wednesday, April 10	Charlotte Amalie, St. Thomas	8 a.m.	5 p.m.
Thursday, April 11	At Sea Cruising Lectures 1–5 p.m.	-	-
Friday, April 12	At Sea Cruising Lectures 8 a.m.–noon	-	-
Saturday, April 13	Miami, Florida	8 a.m.	-

**Save the Date:**  
**Stoweflake**  
**August 2<sup>nd</sup> 2013**

**Stoweflake Mountain Resort & Spa**  
**1746 Mountain Road,**  
**Stowe, Vermont 05672**

Zhimon Jacobson, DMD, MSD, FACD  
Director, Division of Continuing Education and  
Clinical Professor, Department of Restorative  
Sciences & Biomaterials, GSDM



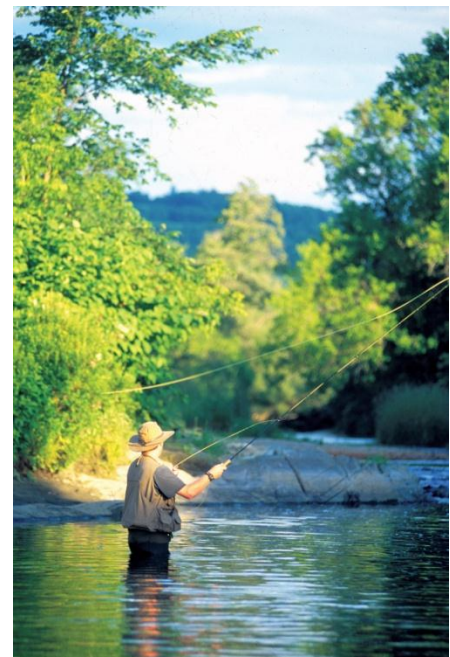
### **Has Implantology Changed Your Practice Yet?**

7 CEUs

**Module 1:** Evidence Based Approach to Treatment Planning

**Module 2:** Current surgical and restoration options

**Module 3:** Long Term Follow-up of implant cases



**Save the Date**  
**Cruise and Learn Mediterranean (Aug 2013)**

Ronni Schnell, DMD  
Clinical Professor  
General Dentistry Department, GSDM



**Transforming Denture Patients to Dental Patients: Updates in Removable Prosthodontics 2013**

9 CEUs

**Module 1:** Current concepts – Predictable (denture) Prosthodontics : What really (still) works

**Module 2:** Go ahead, bite into that apple!

**Module 3:** The future is now...



## General Information

### Registration and Payment

Please fill out and return the registration form—which can be downloaded from the GSDM website at <http://www.bu.edu/dental/files/pdf/Registration-Form.pdf>—along with full tuition for each course. Participants must submit full payment for registration to be valid. Please make checks payable to Boston University Henry M. Goldman School of Dental Medicine (GSDM) and mail to the address below. Participants can register with a credit card by telephone or fax. GSDM accepts MasterCard, Visa, and Discover. Please call 617-638-5656 or fax 617-638-5051. Participants may also register online with a credit card through the secure website at <http://dentalschool.bu.edu/ce>. A letter of confirmation will follow once GSDM receives tuition payment.

GSDM processes applications in the order they are received and accepts last minute registrations only if space is available. Please contact the Division of Continuing Education before arriving to ensure a space in the course.

### Frequent Participation Program

Any participant who takes three courses (on-site, off-site, or online) within one year may take a fourth course of equal or lesser value free. The free course may be a one-day unlimited enrollment course or an online course of the participant's choice. Participants may also use the equal value credit towards a limited enrollment course, a multiple day course, or a higher value online program.

### Time and Location

Courses take place at GSDM unless otherwise noted. Participants can access online programs at <http://dentalschool.bu.edu/ce>.

### Course Credit

For on-site programs, GSDM will issue a verification of participation at the end of the course to confirm attendance and the number of continuing education units earned.

For online programs, participants must submit a test online or by fax. Participants who achieve a score of 80 percent or higher will receive a "Verification of Participation".

Replacing "Verifications of Participation" for courses cost \$50.

GSDM is designated as a nationally approved sponsor by the Academy of General Dentistry and is an ADA CERP® Recognized Provider.

## Recording Classes

Please notify GSDM in advance if you wish to record a class to obtain approval. Participants may only use recorders at the discretion of the instructor.

## Cancellations and Refunds

GSDM will grant refunds for all cancellations received in writing at least 15 days prior to the course date. GSDM retains a \$25 registration fee when a refund is issued for courses less than \$300 and a \$50 fee for courses \$300 or more. GSDM will grant a full refund if the School must cancel a course due to unforeseen circumstances. The School will try to contact all registrants at the time of cancellation. GSDM is not responsible for reimbursement of a non-refundable airline ticket or other travel arrangements if a course is cancelled.

## Disclaimers

GSDM Division of Continuing Education is committed to presenting the most current knowledge in dentistry. Some new theories and procedures may be deemed controversial.

Corporate sponsorship of a GSDM program does not equate to an endorsement of or preference for any product or procedure.

GSDM Division of Continuing Education does not provide insurance for workshop courses. Participants must provide proof of liability and malpractice insurance for courses requiring patients.

GSDM courses are only available to registered participants. Last minute registrations will be honored if space permits. Guests may not attend courses.

## Directions and Contact Information

GSDM is located at the corner of Albany and East Newton Streets.

From the north: Follow Route 1 (via Mystic/Tobin Bridge) to I-93 to Route 3/I-93 (Southeast Expressway or Central Artery) South. Take exit 18 (Massachusetts Avenue). At the traffic light, take a right onto the access road; stay in the right lane.

At the end of the access road, turn right onto Massachusetts Avenue. Take the first right onto Albany Street. Take the second left onto East Newton Street. The School is the first building on the right.

From Logan Airport: Go through the Sumner Tunnel (Route 1A South) to I-93 South. Take exit 18 (Massachusetts Avenue) and follow the directions from the north above.

From the west: Take Route 90 (Massachusetts Turnpike) East to the end. Take I-93 South to exit 18 (Massachusetts Avenue) and follow the directions from the north above.

From the south: Take Route 3/I-93 North to exit 17-18 (Massachusetts Avenue). Watch for signs. At the second traffic light, turn right onto the access road; stay in the right lane and follow the directions from the north above.

Parking is available in the Albany Garage at 710 Albany Street and costs a maximum of \$30 per weekday. The cost is \$5 per day Saturdays. Additional parking is available at the Doctor's Office Building at 720 Harrison Avenue and also costs \$30 per day. Regretfully, GSDM is unable to validate parking.

By public transportation: GSDM is accessible by MBTA bus routes 1, 8, 10, 47, CT1, and CT3. Contact the MBTA at 617-222-3200 or visit [www.mbt.com](http://www.mbt.com) for current bus schedules and route information.

## Contact Information

Please feel free to contact us with any questions about programs or to register for any program offered by the Division of Continuing Education.

Boston University Henry M. Goldman School of Dental Medicine Division of Continuing Education  
100 East Newton Street, G-428 Boston, MA 02118 T: 617-638-5656 or 617-638-5050 F: 617-638-5051 [busdmce@bu.edu](mailto:busdmce@bu.edu) [dentalschool.bu.edu/ce](http://dentalschool.bu.edu/ce)