

Boston Playwrights' Theatre presents

# BOSTON THEATER MARATHON XXVI

## May 5

Michelle M. Agullon  
Rosanna Yamagiwa Alfaro  
Christine Benvenuto  
M. Boeni  
Sari Boren  
Mary Darling  
Fabiola R. Decius  
Gary Duehr  
Tina Esper  
Erin FM  
Patrick Gabridge  
Emily Garber  
Hortense Gerardo  
Robin Goldberg  
Ken Green  
Jayne Hannah  
Marc Harpin  
L.W. Lucas Hasten  
Charles Hertz  
Nathan Scott Herzog  
Monica Jimenez  
Kate Katcher  
Maggie Kearnan  
Terrence Kidd  
Jake Landau  
Charlotte Lang  
Bill Laffanzi  
Vivian Liu-Somers  
Grant MacDermott  
John Manderino  
Angele Maraj  
Scott McCrea  
James McLindon  
Matthew Moore  
Jack Neary  
Leïta Neely  
Ronán Noone  
Evan Northrup  
Rory O'Neill  
Rick Park  
Michael Pisaturo  
Dori A. Robinson  
Isabelle Sanatdar Stevens  
Gabriela Sanders  
Cassie M. Seinuk  
Kayla Sessoms  
Judith Strang-Waldau  
Curt Strickland  
Michael Towers  
Anne Undeland  
Natalie Weinberg  
Brandon Zang

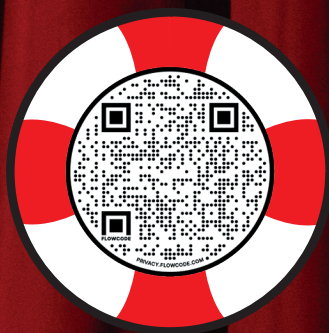
Boston Playwrights' Theatre  
949 Commonwealth Avenue, Boston

Supported by the Boston University  
Center for the Humanities

Net proceeds will benefit the  
Theatre Community Benevolent Fund

[www.BostonPlaywrights.org](http://www.BostonPlaywrights.org)

# WANT TO SUPPORT ARTISTS IN NEED? DONATE TO TCBF.



Scan to Donate

**The Boston theatre community is resilient,** but more importantly, it supports its members. Since 1997, TCBF has provided financial support to artists experiencing catastrophic hardship. Please consider making a tax-deductible donation today to help artists in need—all donations go directly back to the community you love.

**For more information (and to APPLY for funding relief), visit [tcbf.org](http://tcbf.org).**



## WELCOME TO BOSTON THEATER MARATHON XXVI!



Inspired by the iconic Boston Marathon, the BTM is a “theater endurance event” that provides a unique showcase and connecting point for the entire New England theater community, and raises much-needed funds to support fellow artists through the Theatre Community Benevolent Fund. In this 26th year of the BTM, many of us are very familiar with the energy (and slight chaos...) of the day! But as we launch into the next 25 years of this beloved annual event, we are looking at how it can continue to feel fresh and vital for artists and audiences. One major goal: to connect with those who have previously been underrepresented in our pool of playwrights and producers. And thanks to survey data from the past two years, we know exactly who that is:

younger playwrights, playwrights of color, playwrights who had not previously submitted to the BTM, and playwrights and producers from outside of Massachusetts.

This year, through outreach, workshops, and thoughtful planning, we’ve done just that—while continuing the mission at the heart of the Marathon: to make connections between local playwrights and local theaters. Ten minutes at a time, we hope to seed new collaborations and strengthen existing ones, ultimately encouraging more companies to consider producing new plays by local writers.

Endless thank yous to the artists, theater companies, play readers, volunteers, and BPT staff members who have contributed your time to make this day as delightfully chaotic as ever. And if you have thoughts about how we could make the BTM even better—we’re listening!

Yours in new plays,

A handwritten signature in black ink that reads "Megan". The signature is fluid and cursive, with a long horizontal line extending from the end of the name.

Megan Sandberg-Zakian  
Artistic Director, Boston Playwrights' Theatre  
Boston Theater Marathon XXVI, May 5, 2024

## **ABOUT THE BOSTON THEATER MARATHON**

The Boston Theater Marathon is an award-winning all-day “marathon” of new ten-minute plays chosen from submissions by New England playwrights. The selected plays are produced by New England theatre companies that donate their time to this event. Generously supported by the Boston University Center for the Humanities and by individual donations, the BTM gifts net proceeds to the Theatre Community Benevolent Fund, which provides financial relief in a confidential, respectful manner to individual theatre practitioners of Greater Boston and the surrounding areas facing occurrences of a catastrophic nature.

In 2000, the BTM received a special Elliot Norton Award from the Boston Theatre Critics Association for “Enlivening Local Theatre.” The beloved annual event celebrated its silver anniversary in 2023.

### **PLAY SCHEDULE**

Ten plays will be performed in each block.  
We will begin each block at the top of the hour.

### **SEATING: FIRST COME, FIRST SERVED**

Seating is that simple. Please do not sit in chairs marked for late seating if there are other seats available. The theatre will be cleared at the conclusion of each block.

## **WE WISH TO EXPRESS OUR GRATITUDE TO THE PERFORMERS' UNIONS:**

ACTORS' EQUITY ASSOCIATION  
AMERICAN GUILD OF MUSICAL ARTISTS  
AMERICAN GUILD OF VARIETY ARTISTS  
SAG-AFTRA

through Theatre Authority, Inc. for their cooperation in permitting  
the Artists to appear in this program.

### **SPECIAL THANKS**

Belmont Printing, Margaret Ann Brady, Catherine Giorgetti, Maggie Kearnan, Matt Leal, Shannon McIntosh/Suffolk University Theatre, Mavis Manaloto, Penney Pinette/Boston University School of Theatre, Karla M. Sorenson, Kate Snodgrass, Linda Sutherland/Trinity Repertory Company, TheaterMania

The video and/or audio recording of this performance by  
any means whatsoever is strictly prohibited.  
(You may see equipment set up for the livestream of the event.)

*Boston Playwrights' Theatre and the campus of Boston University are located on the traditional and unceded lands of the Pawtucket and Massachusetts peoples, who have stewarded this land for hundreds of generations, and whose name was appropriated by this Commonwealth.*

THE HUNTINGTON

24/25 SEASON

# Leopoldstadt

BY TOM STOPPARD DIRECTED BY CAREY PERLOFF

# Sojourners

BY MFONISO UDOFIA DIRECTED BY DAWN M. SIMMONS

# The Grove

BY MFONISO UDOFIA DIRECTED BY AWOYE TIMPO

# Don't Eat the Mangos

BY RICARDO PÉREZ GONZÁLEZ DIRECTED BY DAVID MENDIZÁBAL

# The Light in the Piazza

BOOK BY CRAIG LUCAS MUSIC & LYRICS BY ADAM GUETTEL DIRECTED BY LORETTA GRECO

PLUS TWO more shows  
to be announced

## HOW DO BTM SUBMISSIONS WORK?

In the fall, guidelines are published on the Boston Playwrights' Theatre website and the submission window opens. To be eligible to submit, playwrights must reside in New England (Connecticut, Massachusetts, Maine, New Hampshire, Rhode Island, Vermont).

Submitted plays go through two rounds of readers. In the first round, a group of readers scores on a simple rubric intended to assess whether the play complies with the published selection criteria and feels producible as a BTM play. In the second round, a group of readers scores plays according to how strongly they are compelled by the work and would want to see it produced in the Marathon. First round readers are mostly internal to BPT; second round readers are a combination of BPT staff and outside artists. After play selection, each year's readers are published on our website and in the BTM program.

Submitted plays are read blind—meaning that readers do not see playwright names attached to scripts. We do this to eliminate bias based on a reader's pre-existing knowledge (or lack thereof) of a playwright. Because we also know that unconscious bias can come into play in blind submissions, we make an effort to gather a group of readers that is diverse across race, age, gender, and aesthetic taste. In the first round, the plays are divided between readers but we assign a group of plays to be re-read by a second reader to double check the consistency of our process. In the second round, all readers read all plays.

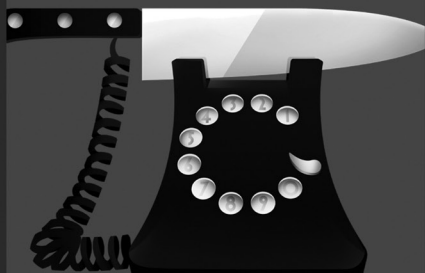
A huge thank you to our readers for Boston Theater Marathon XXVI: Michelle M. Aguillon, Nathan Alan Davis, Tina Esper, Ken Green, Maggie Kearnan, K. Alexa Mavromatis, Megan Sandberg-Zakian, Kate Snodgrass, Isabelle Sanatdar Stevens, Taylor Stark, and Brandon Zang.

Each year, BPT also extends invitations to a small group of writers whose work we admire to contribute a play to the Marathon. Invited writers are indicated with double asterisks (\*\*) next to their names in the detailed block schedule of plays in this program; we are delighted to celebrate their work alongside the plays selected through blind submission.

GREATER  
**BOSTON  
STAGE**  
COMPANY

**TICKETS ON SALE NOW**  
**\$25 - \$69**

**DIAL M**



**FOR MURDER**

**MAY 3 - 19**

**GUYS AND  
DOLLS**



**JUNE 7 - 30**

**Scan for tickets and  
more information**



781-279-2200 | [greaterbostonstage.org](http://greaterbostonstage.org)  
395 Main St, Stoneham, MA

## **BTM XXVI SCHEDULE OF PLAYS**

### **12PM Block**

*APPLES, THE UNIVERSE, AND A LITTLE SOMETHING FOR LATER* by Ken Green/Moonbox Productions  
*JOHN CASSIDY HAD COOTIES* by Ronán Noone/Lyric Stage Company of Boston  
*JAMES BROWN REALNESS* by Kayla Sessoms/Front Porch Arts Collective  
*SOMETHING IN THE AIR* by Scott McCrea/Museful Intent  
*ROAD TRIP* by James McLindon/Liars and Believers  
*LUZ AND URDUJA* by Michelle M. Aguillon/CHUANG Stage  
*THE HOUSE ON 3RD WAY* by Grant MacDermott/Centastage  
*SPEED DATING* by Curt Strickland/Titanic Theatre Company  
*THE KISS* by Anne Undeland/SpeakEasy Stage Company  
*TIMESHARE* by Christine Benvenuto/Exiled Theatre

### **2PM Block**

*LEAP/FLY* by Patrick Gabridge and Evan Northrup/Plays in Place  
*WHAT EVIL LURKS IN THE MINDS OF MEN?* by M. Boeni/Dream Role Players  
*CAKES, DRINKS, AND LIES* by Jayne Hannah/Studio Theatre Worcester  
*A HARD RESET* by Hortense Gerardo/Off-Kendrik  
*SURFACE TENSION* by Natalie Weinberg/Hub Theatre Company of Boston  
*LIE BECOMES TRUTH* by Terrence Kidd/Central Square Theater  
*SEA CHANGE* by L.W. Lucas Hasten/The Umbrella Stage Company  
*HOSTAGE (OR NOT A PLAY ABOUT BETTA FISH)* by Cassie M. Seinuk/M&D Playhouse  
*PICTURE BRIDE* by Judith Strang-Waldau/Fresh Ink Theatre  
*THAT FEELING WHEN YOU'RE THE COUNTY SHERIFF* by Charlotte Lang/URI Theatre

### **4PM Block**

*ECHO & NARCISSUS* composed by Jake Landau, book and lyrics by Emily Garber/Boston Theater Company  
*THE GREAT HARVEST* by Dori A. Robinson/Sleeping Weazel  
*TELL ME A STORY* by Angele Maraj/Newton Theatre Company  
*WOLFMAN AND JANICE* by John Manderino/Trinity Repertory Company  
*NO FACES ALLOWED* by Michael Pisaturo/Commonwealth Shakespeare Company  
*YOU SHOULD TALK TO SOMEONE* by Rory O'Neill/Northeastern University  
*THANKSGIVING AT SHADY PINES* by Kate Katcher/The Wilbury Theatre Group  
*DEATH AND THE TIME TRAVELER* by Matthew Moore/Deadword Theatre Company  
*DID YOU GET YO INVITE?* by Letta Neely/A Revolution of Values Theatre Project  
*THE MOM AND THE MOUNTAIN* by Maggie Kearman/Theatre on Fire

### **6PM Block**

*BREATHE* by Tina Esper/Tufts University  
*STRAWBERRY SHORTCAKE* by Mary Darling/Hovey Players  
*SECRET MENU* by Vivian Liu-Somers/Asian American Playwright Collective  
*TRYST* by Rosanna Yamagiwa Alfaro/Playwrights' Platform  
*CONCEALED CARRY* by Charles Hertz/Boston Playwrights' Theatre  
*THE GREAT PICKLEBALL DEBACLE* by Gary Duehr/imaginary beasts  
*IN THE MOMENT* by Nathan Scott Herzog/American Repertory Theater  
*LIMITED ENGAGEMENT!* by Erin FM/Gloucester Stage Company  
*INTERSTATE* by Brandon Zang/Asian American Theatre Artists of Boston  
*MOLTING* by Michael Towers/Forge Theater Company

### **8PM Block**

*BLAH BLAH, WOOF WOOF* by Monica Jimenez/The Huntington  
*DAUGHTER* by Bill Lattanzi/YAZPLS LLC  
*HOW TO BUILD A FIRE* by Isabelle Sanatdar Stevens/Company One Theatre  
*HIS WEAPON LOVES ME* by Sari Boren/Wheelock Family Theatre  
*ZODIAC ZOE* by Fabiola R. Decius/Open Theatre Project  
*MEMBERS OF THE PUBLIC ARE REQUESTED...* by Marc Harpin/Greater Boston Stage Company  
*LESS THAN MORE THAN FRIENDS* by Gabriela Sanders/Teatro Chelsea  
*OH, SAY CAN YOU (TH)C?* by Rick Park/Actors' Shakespeare Project  
*PARKING LOT* by Robin Goldberg/Theatre@First  
*THE REALITY OF BOB* by Jack Neary/Acting Out Productions



LYRIC STAGE **BOSTON** CELEBRATING **50** YEARS

MAY 31 - JUNE 23

LyricStage.com | 617.585.5678 |   

CELEBRATING 50 YEARS  
CORPORATE SPONSOR: **BrooklineBank**

ONE MAN  
TELLS A LIE,  
DOZENS  
REPEAT IT  
AS THE  
TRUTH.



BY  
DAVID  
HENRY  
HWANG

DIRECTOR  
TED  
HEWLETT

# YELLOW FACE

COMPANY  
**ONE**  
THEATRE  
» what's next.



A NEW PLAY BY ELIANA PIPES

ADAPTED FROM THE HOOPS PROJECT BY NICOLE ACOSTA

DIRECTED BY TONASIA JONES

DRAMATURGY BY AFRIKAH SELAH

IN PARTNERSHIP WITH BOSTON PLAYWRIGHTS' THEATRE AND  
THE CITY OF BOSTON'S OFFICE OF ARTS AND CULTURE

@THE STRAND THEATRE **JULY 12 - AUGUST 10, 2024**

Eliana Pipes brings 5,000 years of history to life with *Hoops*, A JOYOUS  
CELEBRATION OF BLACK, LATINE, AND INDIGENOUS CULTURE.

Based on a series of intimate interviews, this vibrant and playful collage of  
self-adornment and heritage shows off just how much power a pair of hoops can  
hold.

**JOIN US FOR A PUBLIC WORKSHOP  
READING OF HOOPS**

TUESDAY, MAY 21, 7PM @ BOSTON PLAYWRIGHTS' THEATRE  
Presented by Boston Playwrights' Theatre in partnership with C1



SPEAKEASY  
STAGE

FRONT  
PORCH  
ARTS COLLECTIVE

APRIL 26 - MAY 25  
**A STRANGE  
LOOP**

BOOKS, MUSIC, AND LYRICS BY  
MICHAEL R. JACKSON

BOSTONTHEATRESCENE.COM

FRESH INK PRESENTS

Orpheus  
IN THE  
OVERWORLD

written by  
DANTE  
GONZALEZ

directed by  
SHIRA HELENA  
GITLIN

FIVE MORE  
CHANCES  
May 8-11

Black Box,  
Boston Center  
for the Arts

BOSTON  
CENTER  
FOR THE  
ARTS



SCAN FOR  
TICKETS

**BOSTON THEATER MARATHON XXVI**  
**12PM Block**

*APPLES, THE UNIVERSE, AND  
A LITTLE SOMETHING FOR LATER*

**by Ken Green\*\***

**Moonbox Productions**

Directed by Eli Douglas

Keisha: Makayla Collins

Javad: Alan Cid

Shawn: Jackie Randall

Wise Person: Sam Webel

*JOHN CASSIDY HAD COOTIES*

**by Ronán Noone\*\***

**Lyric Stage Company of Boston**

Directed by Alexandra Smith

Laney: Anaís Crespin

Natalie: Elizabeth Carsley

*JAMES BROWN REALNESS*

**by Kayla Sessoms**

**Front Porch Arts Collective**

Directed by Vincent Douglass

Stage Manager: Yasmeen Duncan

Janae: Catia

*SOMETHING IN THE AIR*

**by Scott McCrea**

**Museful Intent**

Directed by Mary Darling

Ashley: Amanda Lynne

Mike: Mike Daniel

*ROAD TRIP*

**by James McLindon**

**Liars and Believers**

Directed by Jesse Garlick

Taylor: Julia Hertzberg

Peyton: Cal Callahan

**BOSTON THEATER MARATHON XXVI**  
**12PM Block**

***LUZ AND URDUJA***

**by Michelle M. Aguillon**

**CHUANG Stage**

Directed by Jenny S. Lee

Assistant Director: Kristian Espiritu

Luz: Lisa Lam

Urduja: Kristian Espiritu

Maya: Jenine Florence Jacinto

***THE HOUSE ON 3RD WAY***

**by Grant MacDermott**

**Centastage**

Directed by Joe Antoun

Barry: Craig Mathers

Linda: Valerie Madden

***SPEED DATING***

**by Curt Strickland**

**Titanic Theatre Company**

Directed by Fran Weinberg

Jesse: Thomas Mahard

Sara: Shelley Brown

***THE KISS***

**by Anne Undeland**

**SpeakEasy Stage Company**

Directed by Huan Bui

Pam: Barbara Douglass

Phil: Jason Myatt

Person: Liliane Klein

Person 2: Anne Undeland

***TIMESHARE***

**by Christine Benvenuto**

**Exiled Theatre**

Directed by Morganna Becker

Kelly: Laura Crook Waxdal

Olive: Eryn O'Sullivan

**BOSTON THEATER MARATHON XXVI**  
**2PM Block**

*LEAP/FLY*

by Patrick Gabridge\*\* and Evan Northrup

**Plays in Place**

Produced by Patrick Gabridge

Magic by Evan Northrup

*WHAT EVIL LURKS IN THE MINDS OF MEN?*

by M. Boeni

**Dream Role Players**

Directed by Robert Thorpe II

Victor Campanelli: Joshua Lee Robinson

Hudson Babcock: Christian Krenek

Radio Voices: Eric Cheung and Amelia Smith

*CAKE, DRINKS, AND LIES*

by Jayne Hannah

**Studio Theatre Worcester**

Directed by Mitch Kiliulis

Production Manager: Lydia Cochran

Production Manager: John Somers

Intimacy Choreographer: Katie Moran

Miriam: Megan Paluzzi

Alan/Manager/Angelo: Noah Moulton

*A HARD RESET*

by Hortense Gerardo\*\*

**Off-Kendrik**

Directed by Sujoy De

Production Controller: Anamika Sengupta

Duncan: Ajay Jain

Delphine: Karen Dervin

*SURFACE TENSION*

by Natalie Weinberg

**Hub Theatre Company of Boston**

Directed by Lauren Cook

Will: Cleveland Nicoll

Alyssa: Lauren Elias

**BOSTON THEATER MARATHON XXVI**  
**2PM Block**

***LIE BECOMES TRUTH***

**by Terrence Kidd\*\***

**Central Square Theater**

Directed by Lee Mikeska Gardner

Thomas: Justin D. Davis

Alicia: Kandyce Whittingham

***SEA CHANGE***

**by L.W. Lucas Hasten**

**The Umbrella Stage Company**

Directed by Daniel "Rourke" O'Rourke

Bobbi: Tori Clay

Dan: Billy Jenkins

***HOSTAGE (OR NOT A PLAY ABOUT BETTA FISH)***

**by Cassie M. Seinuk\*\***

**M&D Playhouse**

Directed by Mark Sickler

Sound Designer: Eric Jordan

Lev: Zachary Poster

Toni: June Desmond

***PICTURE BRIDE***

**by Judith Strang-Waldau**

**Fresh Ink Theatre**

Directed by Hannah Levinson

Artistic Director: Louise Hamill

Managing Director: Jazzmin Bonner

Ani: Bianca Vranceanu

***THAT FEELING WHEN YOU'RE THE COUNTY SHERIFF***

**by Charlotte Lang**

**URI Theatre**

Directed by David O. Weber II

Sheriff Andy: Cole Stanley

Sheriff Bradley: Skyler Bobinski

Sheriff Shana: Tatiana Sullivan

Producer: Rachel Walshe

**BOSTON THEATER MARATHON XXVI**  
**4PM Block**

*ECHO & NARCISSUS*

**book and lyrics by Emily Garber**

**composed by Jake Landau**

**Boston Theater Company**

Directed by Shira Helena Gitlin

Echo: Sophia Muharram

Narcissus: Vinny Douglass

Cello: Shai Wolf

Piano: Alex Franklin

*THE GREAT HARVEST*

**by Dori A. Robinson**

**Sleeping Weazel**

Directed by Jessica Ernst

Woman: Evelyn Holley

Man: Charles Linshaw

*TELL ME A STORY*

**by Angele Maraj**

**Newton Theatre Company**

Directed by Dori A. Robinson

Sound Design: Jeffrey Ochoa-Alvarez

Beta: Marissa Simeqi

Amma: Cassandra Meyer

The Man: Jeffrey Ochoa-Alvarez

*WOLFMAN AND JANICE*

**by John Manderino**

**Trinity Repertory Company**

Directed by Gia Yarn

Stage Management: Gabriela Lopez Ruiz and Ania Briscoe

Wolfman/Frank: Rodney Witherspoon, II

Janice: Nina Giselle

Mrs. Krapilowski: Lynne Collinson

*NO FACES ALLOWED*

**by Michael Pisaturo**

**Commonwealth Shakespeare Company**

Directed by Corey Cadigan

Charlie: Jack Greenberg



**BOSTON THEATER MARATHON XXVI**  
**4PM Block**

***YOU SHOULD TALK TO SOMEONE***

**by Rory O'Neill**

**Northeastern University**

Directed by Greg Allen

Dean: Victor Polizo

Ellie: Courtney St. Gelais

***THANKSGIVING AT SHADY PINES***

**by Kate Katcher**

**The Wilbury Theatre Group**

Directed by Brien Lang

Ethel: Paula Faber

Alicia: Clare Blackmer

William: Vince Petronio

Mr. Griggs: Jeff Ararat

***DEATH AND THE TIME TRAVELER***

**by Matthew Moore**

**Deadword Theatre Company**

Directed by Jake Mariño

Designer: Katie Hubbard

Niso: Michael Shifty Celestin

Death: Ahtziri Ulloa

***DID YOU GET YO INVITE?***

**by Letta Neely**

**A Revolution of Values Theatre Project**

Directed by Greg Allen

Nireah: Rémani Lizana

Sakia: Hampton Richards

Steen: TBA

***THE MOM AND THE MOUNTAIN***

**by Maggie Kearnan\*\***

**Theatre on Fire**

Directed by Darren Evans

Costume Designer: Claire Mitchell

Denise: Emma Na-yun Downs

Marla: Ashley Lyon

Janine: Lisa Tucker

Voice of Announcements: Darren Evans

**BOSTON THEATER MARATHON XXVI**  
**6PM Block**

***BREATHE***

**by Tina Esper\*\***

**Tufts University**

Directed by Thomas Grant

Producer: Katherine Brook

Malcom: Jake Pandina

Other Actors: Angie Zhang, Bella Juhaeri

***STRAWBERRY SHORTCAKE***

**by Mary Darling**

**Hovey Players**

Directed by Mordecai Choi

Producer: Michelle M. Aguillon

Sound Design: Reina Makimura

Olive: Maia Ettinger

Dad: Tom Berry

***SECRET MENU***

**by Vivian Liu-Somers**

**Asian American Playwright Collective**

Directed by Kai Chao

Wyndham (Wyn): Mandy Eckhoff

Karen: Gabrielle Hatcher

Waiter: Vivian Liu-Somers

***TRYST***

**by Rosanna Yamagiwa Alfaro\*\***

**Playwrights' Platform**

Directed by Daniel Gidron

Man: Dustin Teuber

Woman: Karla Goo Lang

***CONCEALED CARRY***

**by Charles Hertz**

**Boston Playwrights' Theatre**

Directed by Kate Snodgrass

Motorist: Will Lyman

Patrol Cop: Grant MacDermott

**BOSTON THEATER MARATHON XXVI**  
**6PM Block**

***THE GREAT PICKLEBALL DEBACLE***

**by Gary Duehr**

**imaginary beasts**

Directed by Matthew Woods

The Chair/Jeri/Sueann: Lauren Foster

Karen/Debbie/Beverly: Alex Alexander

Bill/Darren/Bobby: Mauro Canepa

Tony/John/Jackson: Tom Rash

***IN THE MOMENT***

**by Nathan Scott Herzog**

**American Repertory Theater**

Directed by Karina Cowperthwaite

Producer: Ryan McKittrick

Ella: Emma Rogers

Marcy: Sophie Garrigus

Police Officer: Will Jevon

***LIMITED ENGAGEMENT!***

**by Erin FM**

**Gloucester Stage Company**

Directed by Jenna Glazier

Production Associate: Ryan Natcharian

Gracie: Margaret Ann Brady

Lenny: Luis Negrón

Nurse: Katherine Shaver

***INTERSTATE***

**by Brandon Zang\*\***

**Asian American Theatre Artists of Boston**

Directed by Kira Gandolfo

Intimacy Director: Ansley Moore

Ron: Jeffrey Song

Tim: Ryan Rappaport

***MOLTING***

**by Michael Towers**

**Forge Theater Company**

Directed by Maggie Sulka

Father: Zack Dictakis

Daughter: Chloe Caten

**BOSTON THEATER MARATHON XXVI**  
**8PM Block**

***BLAH BLAH, WOOF WOOF***

**by Monica Jimenez**

**The Huntington**

Directed by Sid Jepsen

Producer: Lyndsay Allyn Cox

Mira (Character 1): TBA

Tarso (Character 2): Cristhian Mancinas García

***DAUGHTER***

**by Bill Lattanzi\*\***

**YASPLZ LLC**

Directed by Robert D. Murphy

Sound Design: Nathan Seavey

Jess: Jocelyn Duford

Daphne: Kimberly Holliday

Davis: Allan Mayo

***HOW TO BUILD A FIRE***

**by Isabelle Sanatdar Stevens\*\***

**Company One Theatre**

Directed by Kimstelle Merisma

Gio: Mars Boucher

Sofi: Samantha Boutureira

***HIS WEAPON LOVES ME***

**by Sari Boren**

**Wheelock Family Theatre**

Directed by Jonah Toussaint

Sound Design: Joseph Lark-Riley

Gabe: Alan Cid

Todd: Zachary Kautter

***ZODIAC ZOE***

**by Fabiola R. Decius\*\***

**Open Theatre Project**

Directed by Dev Luthra

Producer: Dustin Bell

Max: Alex Leondides

Zoe: Elisabet Ober

**BOSTON THEATER MARATHON XXVI**  
**8PM Block**

***MEMBERS OF THE PUBLIC ARE REQUESTED  
TO REMAIN BEHIND THE WHITE LINE***

**by Marc Harpin**  
**Greater Boston Stage Company**  
Directed by Autumn Blazon-Brown  
Cal: Stephen Zubricki IV  
Milo: Ted Silva

***LESS THAN MORE THAN FRIENDS***

**by Gabriela Sanders**  
**Teatro Chelsea**  
Directed by Amaris Rios  
Harper: Kwezi Shongwe  
Callie: Taylor Paine

***OH, SAY CAN YOU (TH)C?***

**by Rick Park**  
**Actors' Shakespeare Project**  
Directed by Bobbie Steinbach  
Heather: Dorothy Dwyer  
Margee: Maureen Keiller  
Connie: Sarah Newhouse

***PARKING LOT***

**by Robin Goldberg**  
**Theatre@First**  
Directed by Andrea Humez  
Kelly: Violet Villanueva  
Andy: Juan José Boschetti Muñiz  
Melissa: Sara Dion

***THE REALITY OF BOB***

**by Jack Neary\*\***  
**Acting Out Productions**  
Directed by Jack Neary  
Rehearsal Stage Manager: Michaela Pride  
Phaedra: Ashley Risteen  
Charlotte: Kerry Quinn

CHUANG  
STAGE  
創

BOSTON  
CENTER  
FOR  
THE  
ARTS

# NÜWA IN FAIRY LAND

MAY 23 - JUNE 1

WRITTEN BY  
BRANDON  
ZANG

DIRECTED BY  
CARLA MIRABAL  
RODRÍGUEZ

Boston Center for the Arts, Plaza Black Box Theatre, 539 Tremont St. Boston, MA

After getting cast as Puck in his high school production of *A Midsummer Night's Dream*, Benji dives deep into method acting to prepare for his role. In the enchanted forest of foggy adolescence, he runs into a stranger: the Chinese creator goddess Nüwa (女媧). Does she hold the key to his birthplace as a transracial adoptee? Or will Benji never escape Fairyland?

GET  
TICKET



PAY-AS-YOU-ARE,  
STARTING AT \$0!  
[chuangstage.org/nuwa-in-fairyland](http://chuangstage.org/nuwa-in-fairyland)

# *The Summer School for the Performing Arts*

Summer 2024  
July 1 - August 10



**Musical Theater - Dramatic Acting - Technical Theater  
Film Production - Junior Leadership**

*Enrolling students entering grades 3<sup>rd</sup> through 11<sup>th</sup>!*

[www.summerschoolfortheperformingarts.com](http://www.summerschoolfortheperformingarts.com)



**REGISTER  
TODAY!**

# Jack Neary's Plays for Young Audiences



"Jack's plays thoroughly engage the audience and even more, they ignite young actors! One of the best experiences Winchester Little Theatre's 'WLT for KIDS' has ever had!" Sara Gomez—Winchester Little Theatre

"Jack Neary's Plays for Young Audiences are of the highest caliber. In many ways, they are the Lay's potato chips of theater; "Betcha can't produce just one!" Larry Leggett—Tribe for Children.

"Kids loved the comedy and still were enchanted by the traditional joyous ending." Bill Taylor—Worcester Foothills

## SOME TITLES

The Big Snore (Sleeping Beauty)  
The Sky is Falling (Chicken Little)  
The Wolf Who Cried Boy  
The Great Fairy Tale Caper  
The NEW Little Red Riding Hood  
The Great Nitwitty Mystery  
It's A Wonderful Wolf  
Final Curtain  
The Three Little Pigs (Kinda)  
Lunch Money  
**And Many More,**

jacknearyonline.com  
jackneary3@gmail.com  
978-853-9620



## **BTM XXVI PLAYWRIGHTS' BIOS**

**MICHELLE M. AGUILLON** (*Luz and Urduja*) has been a theater artist in the Boston area for 25+ years, having worked with the Umbrella Stage Company, Chuang Stage, Asian American Playwright Collective, Central Square Theater, Company One, SpeakEasy, Lyric, and Emerson College. *Luz and Urduja* is her second play with the BTM.

**ROSANNA YAMAGIWA ALFARO** (*Tryst*) has been a Huntington Playwriting Fellow and MCC Artist Fellow in Playwriting. Last February The Burlington Players produced her *Don't Fence Me* (directed by Michelle M. Aguillon) in AAPI Voices: The Dragonfly Plays along with works by Hortense Gerardo and Dev Luthra.

**CHRISTINE BENVENUTO's** (*Timeshare*) plays have been performed in NYC, LA, Boston, western Massachusetts, Pennsylvania, Florida, via podcast and online. A 2024 member of New Perspective Theatre's Women's Work Short Play Lab, she has two books published by St. Martin's Press, and many stories and essays in newspapers, magazines and anthologies.

**M. BOENI** (*What Evil Lurks in the Minds of Men?*) usually lurks backstage as a propmaster and set designer, but occasionally acts. Notable credits include Dream Role Players' *As You Like It* (Rosalind), Longwood Players' *The Pirates of Penzance* (propmaster), and Theatre@First's *The Cherry Orchard* (technical director). Boeni also performs locally as drag king Flash Flood.

**SARI BOREN's** (*His Weapon Loves Me*) play *Who's There?* was in last year's BTM and she's thrilled to be back. Her *Violet Room* was in Flat Earth Theatre's *Seven Rooms*, and her solo play *Exhibiting* premiered at Newton Theatre Company. Sari was in Company One Theatre's 2019 PlayLab, and she received her MFA from Lesley University.

**MARY DARLING** (*Strawberry Shortcake*) writes, directs, and self-produces edgy experiences with her company Museful Intent. This year Balefire Productions is debuting her play *Period* in Lowell and she is producing *Average Hospital* with Museful Intent. In addition to that, *A Very Public, Very Family Friendly Park Bench* was accepted into the 2024 Fresh Fruit Festival in NYC.

**FABIOLA R. DECIUS** (*Zodiac Zoe*) is a playwright, educator, and mentor. She is the founder of Teens WRITE (Writing, Reading, and Investigating Theater Everywhere), which is a program for teenagers to write, revise, cast, direct, and produce original plays culminating in a festival. Fabiola received her BA from Bryn Mawr College and her MFA in Creative Writing from Lesley University. <https://newplayexchange.org/users/6305/fabiola-r-decius>

**GARY DUEHR** (*The Great Pickleball Debacle*) has an MFA from the Iowa Writers' Workshop. In Boston, he directed for Theatre S. and Invisible Cities Group, which

presented his plays for 14 years. In 2001 he received an NEA Poetry Fellowship. His books of poetry include *Point Blank* (In Case of Emergency Press, 2023).

**TINA ESPER** (*Breathe*) is a first-generation American playwright whose multi-cultural background informs her work. In 2023, Tina attended the New Harmony Project and the Sewanee Writers Conference as a Tennessee Williams Scholar. Her play *Neighbor Jane* was the co-recipient of the 2023 National Partners of the American Theater Julie Jensen Playwriting Award.

**ERIN FM** (*Limited Engagement!*) is a playwright, puppeteer, comic improviser, and songwriter. She holds an MFA in Writing for Stage and Screen (Lesley University) and BAs in Philosophy and Comparative Literature (University of Georgia). She was a 2024 regional finalist at KCACTF and is currently in Outer Loop Theater's 2024 Inner Enso program.

**PATRICK GABRIDGE** (*Leap/Fly*) is marking his 20th time in the Marathon. He's thrilled to partner with Evan on a play with magic, after previously collaborating on *Mox Nox* with Brown Box. Look for Patrick's site-specific plays this summer at Old North Church, Historic Northampton, and the Senate Chamber of the Massachusetts' State House.

**EMILY GARBER** (*Echo & Narcissus*) is a queer librettist, novelist, and poet who draws on her love of fantasy, horror, and Classics. Her work has been performed internationally at venues such as 54 Below, Crazy Coqs, and the Narnia Vocal Arts Festival in Italy, including the recent premiere of her one-act opera *&Aeterna*.

**HORTENSE GERARDO** (*A Hard Reset*) is a playwright and Director of the Anthropology, Performance, and Technology (APT) Program at the University of California, San Diego. Her works have been performed at the Institute of Contemporary Art Boston, Nuit Blanche Toronto, New Americans Museum, Umbrella Stage, Without Walls Festival by La Jolla Playhouse. [www.hortensegerardo.com](http://www.hortensegerardo.com)

**ROBIN GOLDBERG** (*Parking Lot*) is a Boston-area playwright, screenwriter, and dramaturg. She received her BA from Emerson College and has just received her MFA in Dramatic Writing from Carnegie Mellon University. Robin is an alumna of the Massachusetts Young Playwrights' Project and is thrilled to be invited into her first Marathon! [www.robingoldbergcreative.com](http://www.robingoldbergcreative.com)

**KEN GREEN** (*Apples, the Universe, and a Little Something for Later*) is a Chicagoan currently residing in Boston's Dorchester neighborhood. His plays include *In The Back/ On The Floor* produced by Chicago's Stage Left Theater, *July 5*, an audio drama on the life of Frederick Douglass and commissioned by NYC's Ensemble for the Romantic Century, and *The F&L at 1330*, part of Moonbox Production's Boston's New Works Festival 2023.

**JAYNE HANNAH** (*Cake, Drinks, and Lies*) returns to comedy following a focus on drama, with *Stalking* and *In the Time of Nothing*. Recent work has been produced by Fusion Theater, SpeakEasy Stage, Urbanite Theater, The Wilbury Theater Group, and Connective Theater. Thank you for including me, I appreciate BTM and, of course, chocolate cake.

**MARC HARPIN**'s (*Members of the Public are Requested to Remain Behind the White Line*) short-form work has appeared in festivals in the U.S. and Canada, including three previous Marathons. Marc holds a BA in Graphic Design and is a partner in the game development studio Worthing & Moncrieff. He was a founding member of Titanic Theatre Company and lives in Brookline.

**L.W. LUCAS HASTEN** (*Sea Change*) is a Connecticut-based writer, composer, and lyricist who is pleased to be represented at the BTM for the second consecutive year; his play, *Gone Nuts*, was produced by the Commonwealth Shakespeare Company for BTM XXV. His work has been showcased by the Burlington County Footlighters (Cinnaminson, NJ), the Firehouse Center for the Arts (Newburyport, MA), and the Ridgefield Theater Barn (Ridgefield, CT). His short musical film, *The Hummingbird Rite of Spring*, featuring Broadway's Ali Ewoldt (*Les Misérables*, *The Phantom of the Opera*) and Garth Kravitz (*The Drowsy Chaperone*) was released on Valentine's Day 2024.

**CHARLES HERTZ** (*Concealed Carry*) is a playwright and screenwriter who lives and works in the New Hampshire Seacoast region. He is the author of numerous short stage plays, two feature-length screenplays, and several short screenplays. Boston Theater Marathon is one of his favorite rites of springtime.

**NATHAN SCOTT HERZOG** (*In the Moment*) is a Vermont Playwright whose works have been read and performed in and around the Green Mountains. He is also a Research Data Specialist at the University of Vermont, the primary developer of the web platform, The CoreMarketplace, and a sometime concert trombonist.

**MONICA JIMENEZ** (*Blah Blah, Woof Woof*) is an award-winning playwright, fiction writer, playwriting and acting instructor, and higher ed writer/editor living in Somerville. Her plays have been produced in the Boston Theater Marathon and the Short+Sweet Hollywood Festival and published in the Mini Plays Review, and her fiction has appeared in Ruminant Magazine and the Stonecoast Review. She holds an MFA in Creative Writing from Stonecoast. [mj-rey.com](http://mj-rey.com)

**KATE KATCHER**'s (*Thanksgiving at Shady Pines*) plays include *36*, winner, Dorothy Silver Playwriting Competition, Julie Harris Playwriting Award finalist; *The Little Sisters of Littleton*, Futurefest Finalist 2022; *Blue Sky with Approaching Storm* (ArtAge); *Scarsdale* (Best Short Plays-2021), *Bread (Laughter is the Best Medicine: 45 Five-Minute Plays in the Time of Coronavirus)*, and *Missus Dobbs, American* (Rogue Theater Festival, Sharon Playhouse, and TRUspeak). MFA WCSU, BFA Boston University.

**MAGGIE KEARNAN** (*The Mom and the Mountain*) is a multi-hyphenate theatre artist and current MFA Playwright at BU. Her plays *IDK [What This Is]* and *Idawalley* have been produced at Boston College. She was a regional finalist at KCACTF 2023 for 10-minute plays.

**TERRENCE KIDD**'s (*Lie Becomes Truth*) plays and screenplays have been produced and presented at the Coolidge Corner Theater, Lesley University, Company One, several Boston Theater Marathons, the Literary Managers and Dramaturgs of America National Conference, and the Kennedy Center. His ten-minute play *Sluggo* (BTM XIII) was a 2011 finalist for the Actors Theatre of Louisville's Heideman Award. He writes for underrepresented characters and audiences who appreciate the hubris, humility, hilarity, and hypocrisy of life's rich pageant.

**JAKE LANDAU** (*Echo & Narcissus*) is a composer based in New York City and London. His music has been performed by the New York Philharmonic, Houston Grand Opera, and headlining stars of the opera and Broadway worlds. A graduate of The Juilliard School and Oxford University, Jake is represented by UIA Talent.  
[www.JakeLandau.com](http://www.JakeLandau.com)

**CHARLOTTE LANG** (*That Feeling When You're The County Sheriff*) holds a BFA in Dramatic Writing from NYU Tisch School of the Arts. Her plays have been performed in New York, London, Alaska, and more. She was a 2018 Sewanee Writers' Conference Tennessee Williams Scholar and a participant in the Valdez Theatre Conference in 2022 and 2023.

**BILL LATTANZI** (*Daughter*) BTM co-founder; President, Playwrights Platform. Recent: *Magpies in the Sky* (BTM 2023); *Silvertone, Jenny Must Die* (Providence Fringe, Playwrights' Platform Fest); *Hamlet: My Generation* (Wilbury) New: *Never Let You Go, To Walk in Beauty*. Two-time finalist, O'Neill; Mass CC Grant; NETC New Play Award, MA from BU. [billlattanzi.com](http://billlattanzi.com)

**VIVIAN LIU-SOMERS** (*Secret Menu*) is an actor/writer/director who is thrilled to be a first-time playwright after being an actor in several BTM plays. She has performed with many groups all over the Boston area. You can see examples of her work at [rebrand.ly/vliusomers](http://rebrand.ly/vliusomers).

**GRANT MacDERMOTT** (*The House on 3rd Way*) is a playwright, screenwriter, and actor. As an actor you can see him on all kinds of TV shows and movies. As a writer you can see his work in New York and Boston. And sometimes he's in New Jersey.

**JOHN MANDERINO** (*Wolfman and Janice*) is the author of seven published works (five novels, two story collections and a memoir). One novel, *Bopper's Progress*, won the 2017 Wundor International Fiction Award. John has also written plays that have been performed at various venues. This piece is from a full play called *Monstrous Love*.

**ANGELE MARAJ** (*Tell Me a Story*) is a songwriter, performer, and playwright. 2022 Dunamis Emerging Artist Fellow; recently selected by the Marion Arts Center Playwrights Incubator program for her full-length play *le temps*. She is also the songwriter and co-creator of the new musical *Once Upon a Carnival*, featured at the 2023 Boston New Works Festival (Moonbox Productions). [www.angelemaraj.com](http://www.angelemaraj.com)

**SCOTT McCREA** (*Something in the Air*) cannot be summarized in 50 words or less. His previous plays in the Boston Theater Marathon include *Her Eyes* (Cape Cod Rep, 2009), *Erosion* (Happy Medium, 2012), and *Dying Backwards* (Tide Taken Productions, 2018). Thanks to Mark DeAngelis for the first line.

**JAMES McLINDON**'s (*Road Trip*) plays have been produced or developed by the O'Neill National Playwrights Conference, Lark, PlayPenn, Edinburgh Fringe, Irish Repertory, Samuel French Festival, Victory Gardens, Hudson Stage, Abingdon, Nylon Fusion, New Rep, Lyric Stage, Detroit Rep, Local Theater, Great Plains Theatre Conference, Seven Devils and hotINK Festival. They have been published by Dramatic Publishing, Smith & Kraus, Brooklyn Publishing, Next Stage Press, and Applause Books.

**MATTHEW MOORE** (*Death and the Time Traveler*) is a playwright and author from New England. Their work has been produced at Durango Arts, Theater Southwest, and the Chain Theater. They are the author of *You Don't Really Feel That Way*.

**JACK NEARY**'s (*The Reality of Bob*) latest play, *The Stands*, is the recipient of four 2023 New Hampshire Theatre Awards, including Outstanding Professional Production and the Excellence in Playwriting Award. His plays have been produced nationwide, in Europe, and in Australia. *The Reality of Bob* is his 25th Boston Theater Marathon production.

**LETTA NEELY** (*Did You Get Yo Invite?*) is a Black lesbian playwright, performer, poet, mother, teacher, and activist. She is currently touring her one-woman, award-winning *Pulling It All Into The Current* play. Her work has been included in anthologies, literary journals, and bathroom stalls. Her book *Geographies of Power* will be released in Fall 2024.

**RONÁN NOONE** (*John Cassidy Had Cooties*) is the author of twelve plays including *Thirst*, *The Smuggler*, and *The Lepers of Baile Baiste*, which have played internationally and in theaters across the United States, including four Off-Broadway productions. He has received the Association for Theatre in Higher Education (ATHE) Award for Excellence in Playwriting. He is a graduate of Boston University's MFA Playwriting Program where he now teaches the art and craft of playwriting. [ronannoone.com](http://ronannoone.com)

**EVAN NORTHRUP** (*Leap/Fly*) is a magician, illusion designer, and installation artist based in Lynn. He uses magic as a medium for storytelling and worldbuilding across a host of artistic forms. Whatever the medium—from street theater to visual arts—Evan's work inspires curiosity towards the world around us.

**RORY O'NEILL** (*You Should Talk to Someone*) is a writer and artist originally from Los Angeles, California. A recent graduate of Northeastern University ('24), Rory is excited to participate in her first Boston Theater Marathon. Previously, her work was produced in Fresh Ink Theatre Company's 8th Annual Mad Dash.

**RICK PARK** (*Oh, Say Can You (TH)C?*) writes plays in Boston. [www.rickparkplays.com](http://www.rickparkplays.com)

**MICHAEL PISATURO** (*No Faces Allowed*) is a Boston-based playwright, dramaturg, and educator who has had work developed at the Association for Theatre in Higher Education National Conference and William Inge Theater Festival New Play Lab. He has been a finalist for the KCACTF Ten-Minute Play Award and Samuel French OOB Short Play Festival.

**DORI A. ROBINSON** (*The Great Harvest*) is a director, playwright, dramaturg, educator, and performer. She has worked with The Huntington, The Barnstormers, Fresh Ink, New Victory, Steppenwolf, Timeline, JArts Collaborative, and Greater Boston Stage. Her original plays have most recently been produced by her company, Alight Theater Guild. [www.dorirobinson.com](http://www.dorirobinson.com)

**ISABELLE SANATDAR STEVENS** (*How to Build a Fire*) is a second-year Playwriting MFA at Boston University. Her work has been supported by Fresh Ink, NewRep, Smith College, BU, and Boston Playwrights' Theatre. Everything I do is for Hind Rajab, Sidra Hassouna, Reed and Khaled, Mahsa Amini #ZanZendeGhiAzadi \*\*\*Research, Amplify, Protest...Don't Forget Iran. Free Palestine.\*\*\*

**GABRIELA SANDERS** (*Less Than More Than Friends*) is a director, actor, playwright, and designer from Westford. Her first work, *Divine Cardboard*, has been read and produced up and down the East Coast, including at last year's Boston Theater Marathon. Her most recent directing project was a production of Ira Levin's mystery thriller, *Veronica's Room*.

**CASSIE M. SEINUK** (*Hostage (Or Not a Play About Betta Fish)*) is a Jewish Cuban playwright with an MFA in Writing for Stage and Screen from Lesley University. Her short works have been produced internationally, including the award-winning *Occupy Hallmark*, which won the Gary Garrison National Ten-Minute Play Award at the Kennedy Center. Seinuk teaches at Lesley University, Boston Conservatory at Berklee, and is the Region 1 Co-Chair of the National Playwrights Program with the Kennedy Center.

**KAYLA SESSOMS** (*James Brown Realness*) is a writer and actor in the Boston area. Writing Credits include: *A Dream Deferred* directed by AJ Aversano, and *Luca* directed by Matt Killion. She is an alumni of the Commonwealth Shakespeare Company Apprentice Program (2023) and will graduate from Suffolk University in May.

**JUDITH STRANG-WALDAU** (*Picture Bride*) writes to create conversation around social justice issues. Full-length plays include *Women of Ararat* (Mosesian Center for the Arts, Wellesley College); *Rockabye* (MCA); and *Metronome* (Barker Theatre). Short

plays performed at Boston Theater Marathon, Firehouse Center for the Arts, Playwrights Collaborative, ReOrient Festival for Golden Thread Productions, International Human Rights Arts Festival.

**CURT STRICKLAND** (*Speed Dating*) is a playwright who recently received a masters degree in playwriting from Lesley University's graduate program. Inspired by August Wilson, Curt is finishing up his fifth play in a ten-play opus on America, each play set in a different decade. Besides his political and cultural essays, [curtsview.com](http://curtsview.com), Curt is a landscape photographer and a former owner at Great American Art, one of the largest commercial art corporations in the nation. Curt believes that Art should serve to heal, inspire, provoke, challenge and to offer hope—but most of all to connect, to remind us of our common humanity. In 2020, Curt received a double lung transplant, an event that had profound effects on both his writing and his life. This experience is the basis of a new play he is developing called *Double Lung*.

**MICHAEL TOWERS** (*Molting*) earned his MFA in Playwriting from Boston University under the direction of Kate Snodgrass, Melinda Lopez and Ronán Noone. His plays have been recognized on four continents and produced throughout the United States. They explore subjects that mystify and inspire him: the natural world, marriage, religion, and the dynamic relationships between teachers and their students.

**ANNE UNDELAND** (*The Kiss*) Member: Dramatists Guild, Howl Playwrights, Berkshire Voices. Short works presented around the country. Full-length: *Lady Randy* (WAM Theatre at Shakespeare & Company), *Wharton Between the Sheets* (Great Barrington Public Theater nominated outstanding new play, Gloucester Stage, NYC's Salmagundi Club). Currently writing *Mozart's Wife, the Lacrymosa*. [anneundeland.com](http://anneundeland.com)

**NATALIE WEINBERG** (*Surface Tension*) is a Boston-area playwright and director. Recent directing credits include Jennifer Haley's *Breadcrumbs* at Westford Academy Theater Arts, and multiple ten-minute plays at the Summer School for the Performing Arts. Find more of her written work on New Play Exchange!

**BRANDON ZANG** (*Interstate*) is a Chinese Canadian playwright whose work has been developed at Lifeline Theatre, Live Arts, KCACTF, Boston Playwrights' Theatre, Queen's University, and the University of Chicago. His play *Niüwa in Fairyland* is premiering at CHUANG Stage this summer in Boston! Brandon is an MFA playwright at Boston University.

\* \* \*

STUDIO

THEATRE WORCESTER

# {Proof<sup>x</sup>}

2 3 5 7 11 13 17 19 23 29 31

By David Auburn

Directed by John Somers

June 7, 8, 14 & 15 - 7:30pm

June 9 & 16 - 2:00pm

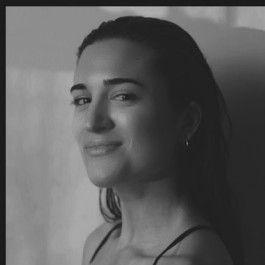
Worcester Academy  
Performance Center

TICKETS:

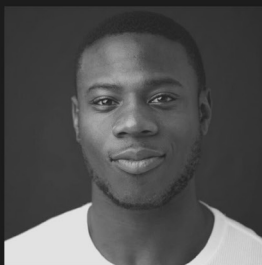
[www.studiotheatreworcester.com](http://www.studiotheatreworcester.com)



"Robert"  
Brad Walker



"Catherine"  
Sandy Clancy



"Hal"  
Mike Daniel



"Claire"  
Sonya Richards



MOONBOX PRODUCTIONS PRESENTS

BOSTON  
**NEW WORKS**  
 FESTIVAL

**2024**

**8 NEW SHOWS!**  
**6 STAGES!**  
**4 DAYS!**

**JUNE 20-23**

#create community

**Grab Your Tickets at [BostonTheatreScene.com](http://BostonTheatreScene.com)!**

**THE PORCH**

**A STRANGE LOOP**

**A Strange Loop**  
 Book, Music, and Lyrics by Michael R. Jackson  
 Directed by Maurice Emmanuel Parent  
*A co-production with SpeakEasy Stage Company*  
**April 26 - May 25**

**next to normal**  
 Music by Tom Kitt  
 Book and Lyrics by Brian Yorkey  
 Directed and Choreographed by Pascale Florestal  
*A co-production with Central Square Theater*  
**June 2 - June 23**

**NEXT TO NORMAL**

**Gala**  
 Save the Date!

**Two Companies, One Gala!**  
 Join us for the Front Porch Arts Collective & Central Square Theater Gala on May 13, 2024 at WBUR CitySpace. Performances from Boston favorites, Honorees, Cocktails, and more! Get your tickets at [bit.ly/CSTPorchGala2024](http://bit.ly/CSTPorchGala2024).

**For Tickets Visit [www.frontporcharts.org](http://www.frontporcharts.org)**

## IN MEMORIAM

### SARAH DeLIMA

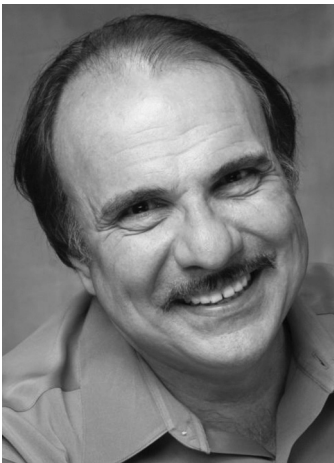
Sarah DeLima was the bright and beautiful flame we were all drawn to. People fell instantly in love with her. She was a great listener who knew how to make everyone feel that they were the most important person in the room, that they were valued and seen. She was gloriously witty in her very British way, posh one minute and bawdy the next, a lady and a broad. She was generous and kind and if she welcomed you into her heart, you were lucky indeed. She was a loyal and trusted friend who would drop everything if you needed a shoulder to cry on or if you simply needed a laugh. Sarah had a passion for theatre and was a truly gifted storyteller, a brilliant actor and cabaret artist. Watching her onstage was a delight. She gave performances that were hilarious and heartbreaking and she was always humble and even a little embarrassed when complimented for her work. When confronted with her inevitable fate, Sarah faced it with humor and grace, without a shred of self pity or bitterness. Some say the world is less bright because she is gone but the truth is, it will always be a brighter place because she let us borrow her for a time, because she was here.



—Maureen Keiller

### SPIRO VELOUDOS

It was at a NEAT meeting on a rainy afternoon when Spiro (to whom I'd never spoken before) whispered to me, "Call me tomorrow. I wanna talk to you." I did call. And the conversation/friendship/artistic collaboration we started that day lasted over 20 years.



How many people have a similar story? For so many of us, Spiro was the entry into Boston theatre and our careers. No one worked harder than him to create and foster the Boston theatre community. He allowed us to stretch, to grow, and to become the artists we are today.

You may no longer be sitting in your favorite seat, scribbling notes for us in the dark, but don't worry, Spiro—we're still receiving them.

—Courtney O'Connor

## IN MEMORIAM

### JOANNA MERLIN

A woman of tremendous generosity and genuine interest in others, Joanna made anyone she interacted with feel welcomed and valued. She was the last living student of Michael Chekhov, and continued his legacy by founding MICHA, The Michael Chekhov Association. She embodied the very essence of the Chekhov spirit by living and working with a sense of openness, curiosity and constant willingness to grow. Joanna was Harold Prince's casting director and cast the original Broadway productions of his collaborations with Stephen Sondheim in the '70s and '80s as well as the original Broadway productions



of *Evita*, *Candide*, and more. As an actor on Broadway Joanna played opposite Laurence Olivier in *Becket*, and created the role of Tzeitel in *Fiddler on the Roof*. Joanna graced the stage of the Boston Playwrights' Theatre at age 82 by playing the role of Helen, a woman suffering and ultimately surrendering to the terrible ravages of Alzheimer's disease in Peter Floyd's *Absence*. Her very presence in the rehearsal room made everyone better as artists as well as human beings through her patience and kindness. She leaned into her work on stage with a rigor and attentiveness that inspired creative collaboration. It was a true honor to work with her. My experience is that she lifted us up to be vaster, more possible than we had ever imagined ourselves to be. She is beloved and shall be missed dearly.

—Megan Schy Gleeson

### JANET MORRISON

Janet Morrison was an accomplished actor and beloved teacher of acting at Brandeis University for 25 years. She graced our stages in *Clean Home* at the Wellfleet Harbor Actors Theater and in *King John* at Actors' Shakespeare Project. An inspired director, her work was seen at Brandeis University with both MFA Actors and undergraduates as well as at The Nora Theatre Company. She was particularly proud of originating the role of Rita in *Last Summer at Bluefish Cove* in NYC. She is survived by her loving partner of 34 years, Scott Cummings, as well as her siblings and their children.



— Adrienne Krstansky

## IN MEMORIAM

### JAIME CARRILLO

I read once that someone wrote about Jaime Carrillo that he not only thought “outside of the box” but that he thought as if the box didn’t even exist. If the concept of “dreaming without limits” had a personification, it was Jaime. As an actor and as a friend he made bold, interesting choices that invited you to come in and ask for more. Most of all, he was always a calm, positive, and reliable presence backstage. I think the first show we worked on was *Trumpet of the Swan* at Wheelock Family Theatre. My daughter DC (Georgia) played the child version of the main character and Jaime played her father. My kid was a bundle of nerves in her first stage role, but that all seemed to mellow out when she was working with Jaime. His happy energy was simply infectious. You couldn’t help but feel good about yourself after spending a few minutes with him. His is a presence that cannot be replaced; however he has set an example for us that we would do well to follow.



Vaya con dios, mi amigo.

—Cliff Odle

### KATE CARNEY

Actor, director, educator, playwright, and storyteller, Kate’s artistry took her from NYC to Paris, Tel Aviv, Poland, China and finally to Boston when she joined faculty of the Brandeis University MFA Acting Program in 1989. Kate performed with the notable avant garde and experimental theatre artists of the 1960s and ’70s, including Joe Chaikin’s Open theatre, La Mama Experimental Theatre, and Jerzy Grotowski.



A feisty, exuberant teacher, Kate was a committed theatre artist, dedicated to the power of theatre and the joy of storytelling in all its forms. In her later years, she never flagged in her support of Boston area theatres. Always positive, she found the best in each play, person, and production.

—Marya Lowry

## IN MEMORIAM

### DEWEY DELLAY

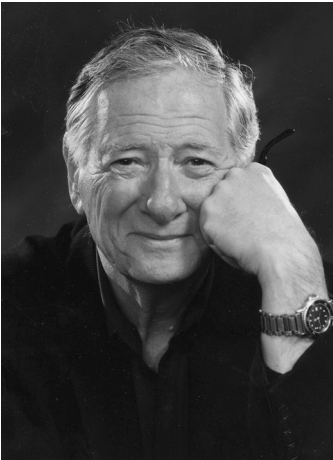
Award-winning composer for theatre, film, and television, Dewey Dellay passed away in June 2023. “Doo” was known for his imaginative, often achingly beautiful musical compositions. His career began as a bass performer. In 2003, he found a home in Boston’s theatre community, where he designed more than 100 productions for theatres across New England, including BPT. He received the 2023 Elliot Norton Award for *Seven Guitars*, his last design. Previously, he was honored with a Nortie for Overall Design Excellence. A generous collaborator, Dewey loved theatre folks, especially his fellow designers. He heard astonishing emotional dimensions in a playwright’s words and captured them musically with a grace, pain, wit, and power that echoes in our hearts and memories.



—Scott Edmiston

### ROBERT BRUSTEIN

As artistic director, playwright, scholar, critic, and teacher, Robert Brustein was a luminary of the American theater. Bob championed his bold vision for the unique role of the theater in American life in his writing, directing, teaching, and as the leader of Yale Repertory Theatre and American Repertory Theater. He viewed the stage as a space for dialogue and debate, and under his leadership, the A.R.T. became a site for exchange between scholars, artists, and the public. As a Harvard student, I was forever marked by the daring productions produced at A.R.T. under his leadership. Bob’s influence on me personally, and on the countless artists and staff members who worked with him, is enormous and profound.



—Diane Paulus

## IN MEMORIAM

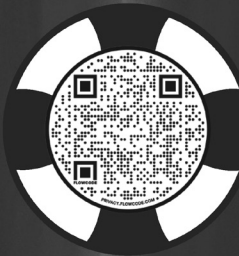
### BRIAN O'DONOVAN

Brian O'Donovan, icon, impresario, imp. He had a smile and a twinkle and a magnificent heart and a deep love of language, words and poetry which almost exceeded his passion for music.

He and I created *A Christmas Celtic Sojourn* (along with several other artists) and it was my privilege to edit his yearly “West Cork Christmas” memories of growing up in Ireland. He changed the lives of countless musicians, including a cross-cultural mix of artists in our yearly Christmas show, illuminating for the audience the influence of Celtic music everywhere: Sweden, Nova Scotia, Norway, Appalachia, and the far West. His genius for family, for celebration and for the “always” of tradition was extraordinary. He changed the face of Celtic music in America and his loss as a friend, husband, father, grandfather, and impresario is felt across the globe.



—Paula Plum



Scan to Donate

**WANT TO SUPPORT  
ARTISTS IN NEED?  
DONATE TO TCBF.**

**The Boston theatre  
community is resilient,**  
but more importantly, it supports its members.  
Your gift today will directly help artists in  
times of hardship.



**For more information (and  
to APPLY for funding relief),  
visit [tcbf.org](http://tcbf.org).**

# GLOUCESTER STAGE

---



*Learn More*



LIVE THEATRE ON CAPE ANN SUMMER 2024  
**GLOUCESTERSTAGE.COM**

*pictured above SADIYAH DYCE STEPHENS, CHERYL D. SINGLETON, JANELLE GRACE*

STW would like to thank



**STUDIO**  
THEATRE WORCESTER

for the cake provided for

**CAKE,  
DRINKS,  
AND LIES**

BY JAYNE HANNAH

INFO@CREATIVECAKESBYCOLLEEN

413-726-4070

www.ccc-cafe.com

**There's no place  
like home.**



**LIARS<sup>and</sup>  
BELIEVERS**  
liarsandbelievers.com



## **BTM XXVI THEATRE COMPANIES**

### **ACTING OUT PRODUCTIONS**

#### ***The Reality of Bob* by Jack Neary**

For over 15 years, Acting Out Productions has provided a creative and supportive environment for students of all ages to learn improvisation, self-expression, performance and stagecraft. We offer workshops for students aged 4-18 in acting and musical theatre and perform at venues in the greater Newburyport area. Now working in collaboration with the Actors Studio of Newburyport, we look forward to offering in-person experiences beginning this summer and expanding into the fall.

### **ACTORS' SHAKESPEARE PROJECT**

#### ***Oh, Say Can You (TH)C?* by Rick Park**

Actors' Shakespeare Project is an award-winning professional theater company with a Resident Artist Company and extensive education, youth, and community programs. ASP performs and works in found spaces, schools, theaters and neighborhoods where we explore robust language, resonant stories, and deeply human characters. Our ensemble-based work is focused on intimacy, storytelling, language, relationships, voice, risk & artistry throughout the Boston area. Join us for *Romeo & Juliet* 5/10-6/2!

### **AMERICAN REPERTORY THEATER**

#### ***In the Moment* by Nathan Scott Herzog**

The American Repertory Theater (A.R.T.) at Harvard University is a leading force in the American theater, producing groundbreaking work that is driven by risk-taking and passionate inquiry. We believe that by engaging our hearts, minds, and bodies, theater has the power to heal and imagine collective pathways forward.

### **ASIAN AMERICAN PLAYWRIGHT COLLECTIVE**

#### ***Secret Menu* by Vivian Liu-Somers**

The Asian American Playwright Collective is a group of Boston-based playwrights who have banded together to nurture, develop, and promote new work by Asian-American playwrights in the Boston area.

### **ASIAN AMERICAN THEATRE ARTISTS OF BOSTON**

#### ***Interstate* by Brandon Zang**

Asian American Theatre Artists of Boston (AATAB) is a collective formed to connect and empower Pan-Asian theatre artists in the Greater Boston area. We seek to carve a presence in Boston's thriving culture through community gatherings and social events, staged readings and developmental workshops of plays by/for/about our community.

### **BOSTON PLAYWRIGHTS' THEATRE**

#### ***Concealed Carry* by Charles Hertz**

Boston Playwrights' Theatre is an award-winning professional theatre dedicated to new works for the stage, and the home of the Boston University graduate playwriting program.

Founded in 1981 by Nobel Laureate Derek Walcott, BPT seeks to develop and produce new plays by living playwrights that deepen our collective understanding as we reflect on our past, take on the challenges of our present moment, and plan for our shared future. [www.BostonPlaywrights.org](http://www.BostonPlaywrights.org)

### **BOSTON THEATER COMPANY**

***Echo & Narcissus*, book and lyrics by Emily Garber, composed by Jake Landau**

Boston Theater Company is at the intersection of arts, athletics, and inclusion, dedicated to creating experiences for and about marginalized communities. We believe that shared experiences can unite, uncover and illuminate. We are committed to creating programs that amplify voices that are often left out, including a particular focus on the LGBTQ+ community. We champion inclusivity, work to break down financial barriers, and celebrate the transformative power we have as artists.

### **CENTASTAGE**

***The House on 3rd Way* by Grant MacDermott**

Centastage has been developing and producing new plays by local playwrights since 1991. Over that time, the organization has produced over 80 new plays including six Women On Top Festivals of new plays by women, four cabarets of new songs, and one CD. The organization facilitates Write-On!, a playwriting group which has been meeting monthly since 1994. Centastage has proudly been part of BTM since its beginning.

[www.centastage.org](http://www.centastage.org)

### **CENTRAL SQUARE THEATER**

***Lie Becomes Truth* by Terrence Kidd**

Central Square Theater produces world premieres, cutting edge contemporary work and bold takes on the classics in which points of view are heard, perspective shifts, and change can happen. Upholding the values and theatrical excellence of its origin companies, Underground Railway Theater and The Nora, CST explores social justice, science and gender politics through artistic rigor, radical partnership and community engagement.

[Centralsquaretheater.org](http://Centralsquaretheater.org)

### **CHUANG STAGE**

***Luz and Urduja* by Michelle M. Aguillon**

Founded in 2018, CHUANG Stage is Boston's Asian American theatre company, cultivating joyful and radical pan-Asian stories that pioneer a translingual activism in the arts. CHUANG Stage envisions a future in the American theatre moved forward by theatre artists and audiences of Asian descent through innovative productions that focus on the diverse language needs of the pan-Asian immigrant community.

### **COMMONWEALTH SHAKESPEARE COMPANY**

***No Faces Allowed* by Michael Pisaturo**

Commonwealth Shakespeare Company (CSC) is a non-profit theater organization founded in 1996, dedicated to artistic excellence, accessibility, and education. CSC's

Free Shakespeare on the Common has served over one million audience members over its 27-year history and has become a beloved summer tradition enjoyed by more than 50,000 people annually. This year, CSC will present *The Winter's Tale* directed by CSC Associate Artistic Director Bryn Boice at the Parkman Bandstand in July-August of 2024.

## **COMPANY ONE THEATRE**

### ***How to Build a Fire* by Isabelle Sanatdar Stevens**

Company One Theatre's mission is to build community at the intersection of art and social change. We envision a Boston defined by justice, equity, and artistic innovation. This year, C1 celebrates its 25th birthday and an entire season of pay-what-you-want ticketing! Join us at our 25th Anniversary Benefit on May 6 and catch *Morning, Noon, and Night*, written by Boston's own Kirsten Greenidge, at the BCA Plaza Theatre until May 25th!

## **DEADWORD THEATRE COMPANY**

### ***Death and the Time Traveler* by Matthew Moore**

Deadword Theatre Company is a collection of Boston-based artists, students, teachers, and friends. Our mission is to make theater accessible; for the creators and the audience, while uplifting local creatives in the process. We are committed to providing opportunities to those who otherwise would not normally get them, whether that be on or off stage, throughout the Boston area, through a balance of original content and new takes on old classics.

## **DREAM ROLE PLAYERS**

### ***What Evil Lurks in the Minds of Men?* by M. Boeni**

The stated goal of Dream Role Players is to help local theater artists realize their dream projects. Whether the dream is playing a long desired role, giving directing a try, putting up a new work, or some other combination, the mission of Dream Role Players is to make it happen. We also strive to engage the communities where we perform along the way.

## **EXILED THEATRE**

### ***Timeshare* by Christine Benvenuto**

Exiled Theatre was founded in 2014 by co-artistic directors Teri Incampo and James Wilkinson who promptly began unleashing their theatrical sensibilities on the Boston theatre scene. Since then, Exiled has focused on producing a combination of new works alongside more established pieces from the theatrical canon. The company made its post-pandemic return this past fall with *Hauntings I Have Lived Through* and is currently planning for fall 2024. For more information, visit [www.exiledtheatre.com](http://www.exiledtheatre.com).

## **FORGE THEATER COMPANY**

### ***Molting* by Michael Towers**

Forge Theater Company borrows its name from the historic Village where it was born: Forge Village in Westford, MA. At "the Forge," our stage is the anvil where new plays are wrought in readings, rehearsals, and workshop productions. Actors, directors and designers collaborate with playwrights to build trust in each other and to inspire risk in

our collective art. Together, we shape thought-provoking theater that invites conversation and forges community whose foundation is strong but malleable.

## **FRESH INK THEATRE**

### ***Picture Bride* by Judith Strang-Waldau**

Fresh Ink Theatre provides an avenue for the development of new work on the Boston small theatre scene in a collaborative, playwright-centered manner. Fresh Ink's unique submission model and development process have led to successful runs of plays by local playwrights including Ginger Lazarus, Dave Valdes, Erin Lerch, and many more. Fresh Ink also created the annual Mad Dash 24-hour play festival, returning this summer. Learn more at [www.freshinktheatre.org](http://www.freshinktheatre.org)!

## **FRONT PORCH ARTS COLLECTIVE**

### ***James Brown Realness* by Kayla Sessoms**

The Front Porch Arts Collective is a black theatre company committed to advancing racial equity in Boston through theater. As a black theater company committed to rewriting racist narratives, our namesake signifies a communal spirit, inspiring us to serve communities of color and produce art that is inclusive of all communities and welcoming to all audiences, to inspire a more tolerant and inclusive Boston.

## **GLOUCESTER STAGE COMPANY**

### ***Limited Engagement!* by Erin FM**

Gloucester Stage is a professional non-profit theater company, operating under a NEAT agreement with AEA, SDC, and IATSE unions, presenting contemporary plays and rousing classics that have moved on to commercial productions in New York and Paris. Located in a century-old brick warehouse on the oceanfront of Boston's North Shore, the unique three-quarter thrust stage provides an intimate experience for audiences.

## **GREATER BOSTON STAGE COMPANY**

### ***Members of the Public Are Requested to Remain Behind the White Line* by Marc Harpin**

At Greater Boston Stage Company, our mission is to bring vibrant professional theatre beyond Boston's boundaries. We produce six mainstage productions each season, as well as curate multiple special events including our Theatre for Young Audience series. Our Young Company education program provides training and performance opportunities for students in grades 1–12. Serving as a community anchor, we enrich the local economy and provide a welcoming cultural destination in Boston's Metro North.

## **HOVEY PLAYERS**

### ***Strawberry Shortcake* by Mary Darling**

Hovey Players has been producing provocative and timely stories since 1936. Located near the historic Moody Street in Waltham, MA in the Abbott Memorial Theater, Hovey is among the most intimate performance spaces in New England. Recent productions include *Appropriate* by Branden Jacobs-Jenkins, *The Wolves* by Sarah DeLappe. Next up: Hovey is co-producing *The Elephant Man* with O4FXSAKE Productions running April 18-21. Our 2024-2025 Season will be announced this spring! [www.hoveyplayers.com](http://www.hoveyplayers.com)

## **HUB THEATRE COMPANY OF BOSTON**

### ***Surface Tension* by Natalie Weinberg**

Hub Theatre Company of Boston is Boston's first and only theatre company with a "Pay-What-You-Can" ticket policy for every seat, every show, every time! Join us Saturday, July 20-Saturday, August 3, 2024 at Club Cafe for the Boston premiere of *46 Plays for America's First Ladies* directed by Ilyse Robbins. To find out more about Hub, be sure to like us on Facebook, follow us on Twitter (@HubTheatreBos), and Instagram (@hubtheatreboston) and sign up for our e-mail list at [www.hubtheatreboston.org](http://www.hubtheatreboston.org).

## **IMAGINARY BEASTS**

### ***The Great Pickleball Debacle* by Gary Duehr**

imaginary beasts is an incubator for adventurous theatre making. We provide our members a unique chance to explore and develop theatre in an ongoing studio environment. Devoted to pushing the boundaries of how theatre is made and who can make it, we bring together traditional and non-traditional performance artists to produce work for an eclectic public. What kind of beast are you?

## **LIARS AND BELIEVERS**

### ***Road Trip* by James McLindon**

Liars and Believers creates original, genre-defying theatre with music, movement, mask, puppet, clown... Pretty much anything we can get our hands on to tell a good story about the world we share. We premiere in Boston and tour across the country and around the world. Wanna play?

## **LYRIC STAGE COMPANY OF BOSTON**

### ***John Cassidy Had Cooties* by Ronán Noone**

Lyric Stage produces and presents live theatre in Greater Boston with an intimate approach that promotes inclusivity and connection. Lyric Stage leads an effort to integrate live theater and theater education into the lives of all residents of greater Boston. Established in 1974, and in residence at 140 Clarendon Street since 1991, the Lyric Stage is Boston's oldest resident theatre company, producing a six-show season including Broadway-style musicals, new plays, and established classics.

## **M&D PLAYHOUSE**

### ***Hostages (or not a play about betta fish)* by Cassie M. Seinuk**

M&D Playhouse, located in the heart of North Conway, NH, is the premier theater company in the Mt. Washington Valley. Promoting and preserving arts is an important part of our mission, and we are proud to offer opportunities through education and participation. Founded in 2000, it has garnered over 37 NH Theater Awards. With a stellar reputation, M&D presents high-quality, thought-provoking dramas, musicals, and comedies in addition to hosting workshops, cabarets, and guest artists.

## **MOONBOX PRODUCTIONS**

### ***Apples, the Universe, and a Little Something for Later* by Ken Green**

Moonbox Productions is a non profit theatre company based in Cambridge, Massachusetts whose mission is to present high quality theater productions using local talent, and to share its spaces with other local non profit organizations in order to help them increase the reach and impact of their work.

## **MUSEFUL INTENT**

### ***Something in the Air* by Scott McCrea**

Mary Darling and Mikey Maestaz are married creative partners who formed Museful Intent to create artistic opportunities for themselves and others. They are passionate about staging theatrical experiences in non-traditional spaces and showcasing that original work can thrive without a big budget, stage, or full set.

## **NEWTON THEATRE COMPANY**

### ***Tell Me a Story* by Angele Maraj**

The mission of Newton Theatre company is to create high quality theatre with a focus on women's voices. Our productions challenge historical representations of women by exploring roles beyond the conventional. We build a better understanding of ourselves and the world around us by exploring humanity through different perspectives. Our material connects our community, celebrates the unexpected, and welcomes all.

## **NORTHEASTERN UNIVERSITY DEPARTMENT OF THEATRE**

### ***You Should Talk to Someone* by Rory O'Neill**

A Northeastern Theatre education aligns collaborative theatre-making (production, design, and performance) with academic study and practice-based research. Our students develop a rich foundation for meaningful and prosperous careers through experiential learning. We are committed to the ongoing pursuit of intersectional social and racial justice. We incorporate diverse methodologies, approaches, and measures of success.

## **OFF-KENDRIK**

### ***A Hard Reset* by Hortense Gerardo**

Off-Kendrik brings the South Asian community to the center stage of Boston/New England, through Art, Theatre, and Storytelling. With roots in Bengali theatrical productions, we have rapidly evolved to embrace the rich montage of languages and artistic traditions that blend within the fabric of South Asian culture. Born in 2008, Off-Kendrik is a 501(c)(3) non-profit organization, based in the Greater Boston area of Massachusetts.

## **OPEN THEATRE PROJECT**

### ***Zodiac Zoe* by Fabiola R. Decius**

Open Theatre Project creates theatre that fosters engaged communities, cultivates empathy and forges authentic relationships. We recognize that many of the traditional operating principles of OTP and the American theatre have been rooted in white supremacist

structures. At OTP, we commit to transparency in exposing and removing these structures in all aspects of our company.

## **PLAYWRIGHTS' PLATFORM**

### ***Tryst* by Rosanna Yamagiwa Alfaro**

Playwrights' Platform is a non-profit, Boston-area cooperative of playwrights, directors, and resident actors. Since 1972, Playwrights' Platform has helped develop new theater by providing a forum to explore the process of creating dramatic work.

## **PLAYS IN PLACE**

### ***Leap/Fly* by Patrick Gabridge and Evan Northrup**

Plays in Place creates new site-specific plays in partnership with museums, historic sites, and other institutions. This summer look for *Revolution's Edge* at Boston's Old North Church (June 7-August 10), *Pulling at the Roots* at Historic Northampton (June 19-29), and *A Light Under the Dome* in the Senate Chamber of the Massachusetts' State House (August 13-16). Our partners include the National Park Service, Mount Auburn Cemetery, and many more. [www.playsinplace.com](http://www.playsinplace.com)

## **A REVOLUTION OF VALUES THEATRE PROJECT**

### ***Did You Get Yo Invite?* by Letta Neely**

A Revolution of Values Theatre Project is a dynamic and innovative theater company dedicated to exploring and challenging societal norms through the power of storytelling. Our mission is to promote compassion, understanding, and social change. Led by Letta Neely's writing and performing and Greg Allen's dramaturgy and artistic direction, our company's work promises to ignite transformative conversations that push the boundaries of conventional thinking.

## **SLEEPING WEAZEL**

### ***The Great Harvest* by Dori A. Robinson**

Sleeping Weazel produces bold, experimental multimedia theatre and performance with social justice ideals. The company has premiered twenty original productions and received two Elliot Norton Awards (Outstanding Production, Small Theatre) for *The Audacity: Women Speak* and James Scruggs' *3/Fifths' Trapped in a Traveling Minstrel Show*, and a nomination for the Elliot Norton Award (Outstanding Choreography, Small Theater) for Charlotte Meehan's *Everyday Life and Other Odds and Ends*.

## **SPEAKEASY STAGE COMPANY**

### ***The Kiss* by Anne Undeland**

SpeakEasy Stage is a non-profit theatre company located in the South End of Boston. Since our founding in 1992, we've produced vital, timely and entertaining productions that have helped make Boston's South End into an artistic and cultural destination. SpeakEasy Stage has distinguished itself as Boston's premiere theater, consistently winning acclaim for presenting top-quality productions of contemporary, thought-provoking, cutting-edge plays and musicals.

## **STUDIO THEATRE WORCESTER**

### ***Cake, Drinks, and Lies* by Jayne Hannah**

Founded in 2018, Studio Theatre Worcester is committed to a differentiated, professional theatre experience that reflects the diversity and vibrancy of Worcester communities. Our high quality, theatrical productions and education programs inspire and challenge our audiences while providing compensated opportunities for artists. We seek to be the professional theatre of choice for artists, designers, educators, and theatregoers in Central Massachusetts. and beyond.

## **TEATRO CHELSEA**

### ***Less Than More Than Friends* by Gabriela Sanders**

Teatro Chelsea celebrates Latiné cultures, showcases and fosters local talent, builds community through arts engagement and collaboration, and provides a hub for Latiné artists. Teatro Chelsea creates theatre at the crossroads of languages, cultures, and histories that make up the Latinx community, and seeks to amplify the voices that speak to these unique experiences.

## **THE HUNTINGTON**

### ***Blah Blah, Woof Woof* by Monica Jimenez**

The Huntington engages, inspires, entertains, and challenges audiences with theatrical productions that range from the classics to new works; we train and support the next generation of theatre artists; we provide arts education programs that promote life-long learning to a diverse community; and we celebrate the essential power of the theatre to illuminate our common humanity.

## **THE UMBRELLA STAGE COMPANY**

### ***Sea Change* by L.W. Lucas Hasten**

The Umbrella Stage Company is Greater Boston's newest professional theater company, with a focus on presenting Bold, Daring, and Innovative performances in two new state-of-the-art theaters in Concord, MA.

## **THE WILBURY THEATRE GROUP**

### ***Thanksgiving at Shady Pines* by Kate Katcher**

An award-winning\*, not-for-profit professional theatre company, The Wilbury Theatre Group engages our community in thought-provoking conversation through new works, reimagined classics, and adventurous playmaking. We are idealistic, ambitious, and stubborn in our resolve to create theatre that entertains, enlightens, and inspires. \*WINNER of the 2018 National Theatre Company Grant from the American Theatre Wing (The Tony Awards).

## **THEATRE@FIRST**

### ***Parking Lot* by Robin Goldberg**

Theatre@First is an all-volunteer community theatre based in Somerville, MA. We offer affordable and eclectic performances to the community, aiming to surprise, delight, entertain, and educate our audiences. Over the past twenty years we have staged more



than sixty mainstage productions, as well as staged readings and other special events, in a variety of local venues. We offer a supportive environment in which to work, play, grow, and explore new areas of the theatre arts.

## **THEATRE ON FIRE**

### ***The Mom and the Mountain* by Maggie Kearnan**

Theatre on Fire is dead. Or is it? In its heyday, TOF produced hot, high-quality plays that took you out of your comfort zone without going over your head. We didn't do cute and we didn't do boring. We presented shows that you wanted to see, whether you're a theatre geek or had never seen a play in your life. TOF was great theatre, for you. What is Theatre on Fire now, you ask? A zombie? An eternal idea? A sense memory? One day, all shall be revealed.

## **TITANIC THEATRE COMPANY**

### ***Speed Dating* by Curt Strickland**

Founded in 2010 Titanic Theatre Company is committed to sharp-edged contemporary comedy. Their 12+ seasons have featured such playwrights as Charles Busch, Christopher Durang, Nicky Silver, David Ives, David Lindsay-Abaire, and Paul Rudnick. They also have produced several evenings of new plays by local playwrights. Be on the watch for their evening of new 10-minute plays coming up October 4-6 at BPT.

## **TRINITY REPERTORY COMPANY**

### ***Wolfman and Janice* by John Manderino**

Welcome home to Trinity Rep! Our mission is to reinvent the public square with dramatic art that stimulates, educates, and engages our diverse community in a continuing dialogue. We do this through nationally recognized stage productions, community engagement programming, a professional artistic and resident company, graduate training programs offered in partnership with Brown University, lifelong learning opportunities, and arts education programs for students in grades K-12.

## **TUFTS UNIVERSITY**

### ***Breathe* by Tina Esper**

Tufts University Theater and Dance Department is a close-knit community that offers five mainstage productions a year, supports student capstone and thesis productions, and welcomes several visiting artists to campus. We produce a range of work that includes musical theatre, originally-written student creations, classic and contemporary plays from across the globe, and as well as dance from a variety of social and cultural traditions.

## **URI THEATRE**

### ***That Feeling When You're the County Sherriff* by Charlotte Lang**

The University of Rhode Island Theatre program provides a conservatory experience in a pre-professional liberal arts setting. Our distinguished faculty, guest artists and staff place an equal emphasis on the theoretical and practical understanding of theatre. Artistically vibrant, relevant and rooted in collaboration, our unique production program enriches all

students and serves the educational and cultural needs of the university and the greater community.

## **WHEELOCK FAMILY THEATRE**

### ***His Weapon Loves Me* by Sari Boren**

Wheelock Family Theatre creates professional theatre and educational experiences for artists and audiences of all ages and identities with the power to enrich and expand our understanding of our shared humanity. We tell stories featuring intergenerational casts that resonate with adults and children in the audience in order to foster important conversations across generations and enrich and expand our understanding of our shared humanity.

## **YASPLZ LLC**

### ***Daughter* by Bill Lattanzi**

YASPLZ LLC was formed in 2018 by Kimberly Holliday and Robert D. Murphy to produce and perform John Minigan's *Noir Hamlet* at the 2019 Edinburgh Festival Fringe. YASPLZ LLC also produced *The Pros And Cons Of Implosion* at the Samuel French Off Off Broadway Short Play Festival in 2022. In 2023, with funding from Mass Cultural Council and local Culture Councils, YASPLZ LLC produced *The Fire Escape Plays*, a program of "block party theatre," in the downtowns of Beverly and Amesbury.

\* \* \*

## **BOSTON THEATER MARATHON STAFF**

Festival Curators: Darren Evans, K. Alexa Mavromatis, and Megan Sandberg-Zakian

Technical Director: Alec Haklar

Lighting Designer: John Holmes

Deck Manager: Michael Towers

Deck Crew: Ethan Mandile, Claire Mitchell, Carly Stegall

Stage Manager: Cassie M. Seinuk

Assistant Stage Manager: Fanni Horváth

Sound Engineer: Angela He

Co-Founders: Kate Snodgrass and Bill Lattanzi

And a team of amazing volunteers!!!

## **BOSTON PLAYWRIGHTS' THEATRE STAFF**

Artistic Director: Megan Sandberg-Zakian

Associate Professor of the Practice of Playwriting: Nathan Alan Davis

Managing Director: Darren Evans

Technical Director: Alec Haklar

Marketing Coordinator: K. Alexa Mavromatis

# BPT 24/25

YOUR ALL-ACCESS PASS TO  
THE FRESHEST NEW PLAYS

[BOSTONPLAYWRIGHTS.ORG](http://BOSTONPLAYWRIGHTS.ORG)



# THEATERMANIA

## All Things Theater. All the Time.

TheaterMania is the ultimate concierge service that researches, reviews and recommends how to best experience theater and live events.

### Breaking News

All of the biggest stories in one place

### Insightful Reviews

From the good to the bad, and everything in between

### Discounted Tickets

Great ticket deals every single day

**and More!**

Experience it all on  
[TheaterMania.com](https://TheaterMania.com)

