

Audition Repertoire for the following Summer 2024 programs:

Two-Week Trumpet Workshop
Young Artists Wind Ensemble
Young Artists Orchestra

Applicants for the Two-Week Trumpet Workshop should prepare the following:

- One solo work of your choice that best demonstrates the full range of your technical and expressive skills.
 - **Optional:** A movement or work written by a composer who represents a group historically excluded from the classical canon is welcome.
- Respighi: Pines of Rome, second movement, offstage solo (in C)
- Tchaikovsky: Swan Lake, “Neapolitan Dance”
- Mussorgsky: Opening to Pictures at an Exhibition

Applicants for the Young Artists Wind Ensemble and Young Artists Orchestra should prepare the above and additionally, the following (this is optional for the Two-Week Workshop):

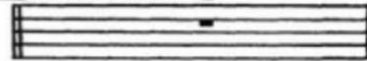
- Bartók: Concerto for Orchestra, first movement, bars 358–396

**Please note that if necessary, it is acceptable to play excerpts using a trumpet other than what is indicated. Excerpts must be played at the correct concert pitch.*

Tchaikovsky: Swan Lake, "Neapolitan Dance"

in A

Andantino quasi
1 moderato 1



A musical score for the first part of the Neapolitan Dance. It consists of ten staves of music in 3/4 time, key of A major. The first staff is marked "Solo" and "p". The second staff has a "p" dynamic. The third staff has a "più f" dynamic. The fourth staff has a "p" dynamic. The fifth staff has a "p" dynamic. The sixth staff is marked "Molto più mosso" and "mf". The seventh staff has a "poco più f" dynamic. The eighth staff has a "poco più f" dynamic. The ninth staff has a "poco più f" dynamic. The tenth staff is marked "2 Presto" and "ff". There are red L-shaped markers on the left and right sides of the score.

Mussorgsky: Opening to Pictures at an Exhibition

in C

Allegro giusto, nel modo russo; senza allegrezza, ma poco sostenuto.

The image shows a musical score for the opening of Mussorgsky's 'Pictures at an Exhibition' in C major. The score is in 3/4 time and consists of three systems. The first system has a red L-shaped bracket at the beginning. The second system has a circled '1' above the first measure. The third system has a circled '2' above the first measure and a red L-shaped bracket at the end. The piano part features a rhythmic pattern of eighth and sixteenth notes, while the treble part has a more melodic line. Dynamics include 'f' (forte) and 'f' (f) markings.

Bartók: Concerto for Orchestra, first movement, bars 358–396

Required for YAWE and YAO. Optional for Two-Week Trumpet Workshop

in C

359

364

f ben marc

marc.

376

380

cresc.

386

1

ff

Poch. allarg. (4)

396

Tran- quillo