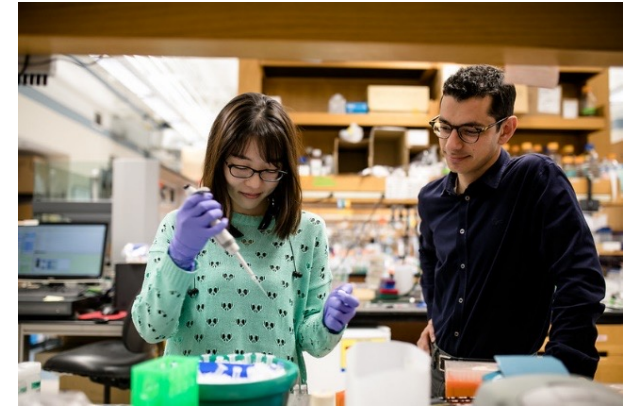
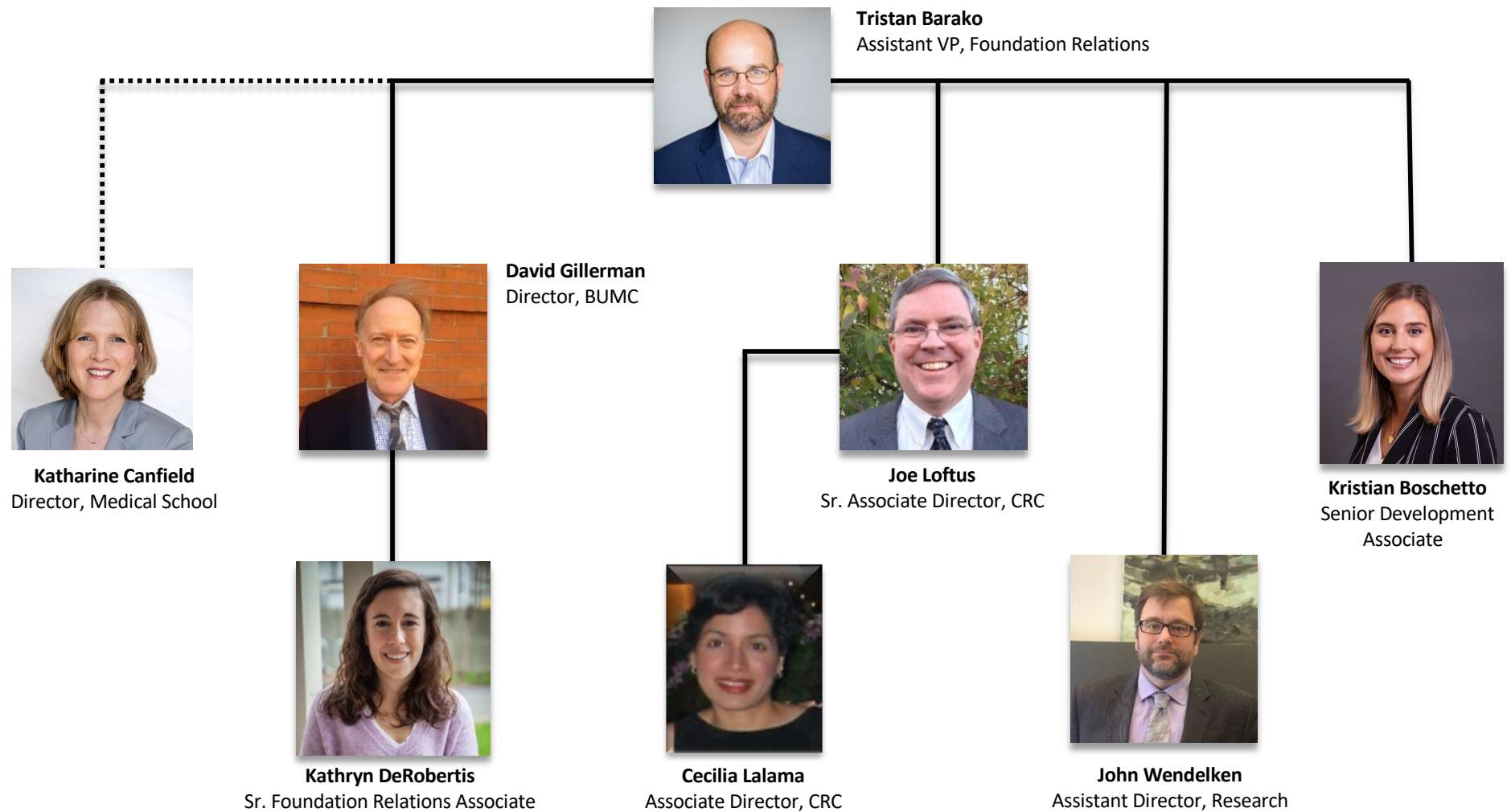


# Overview of Foundation Relations at Boston University

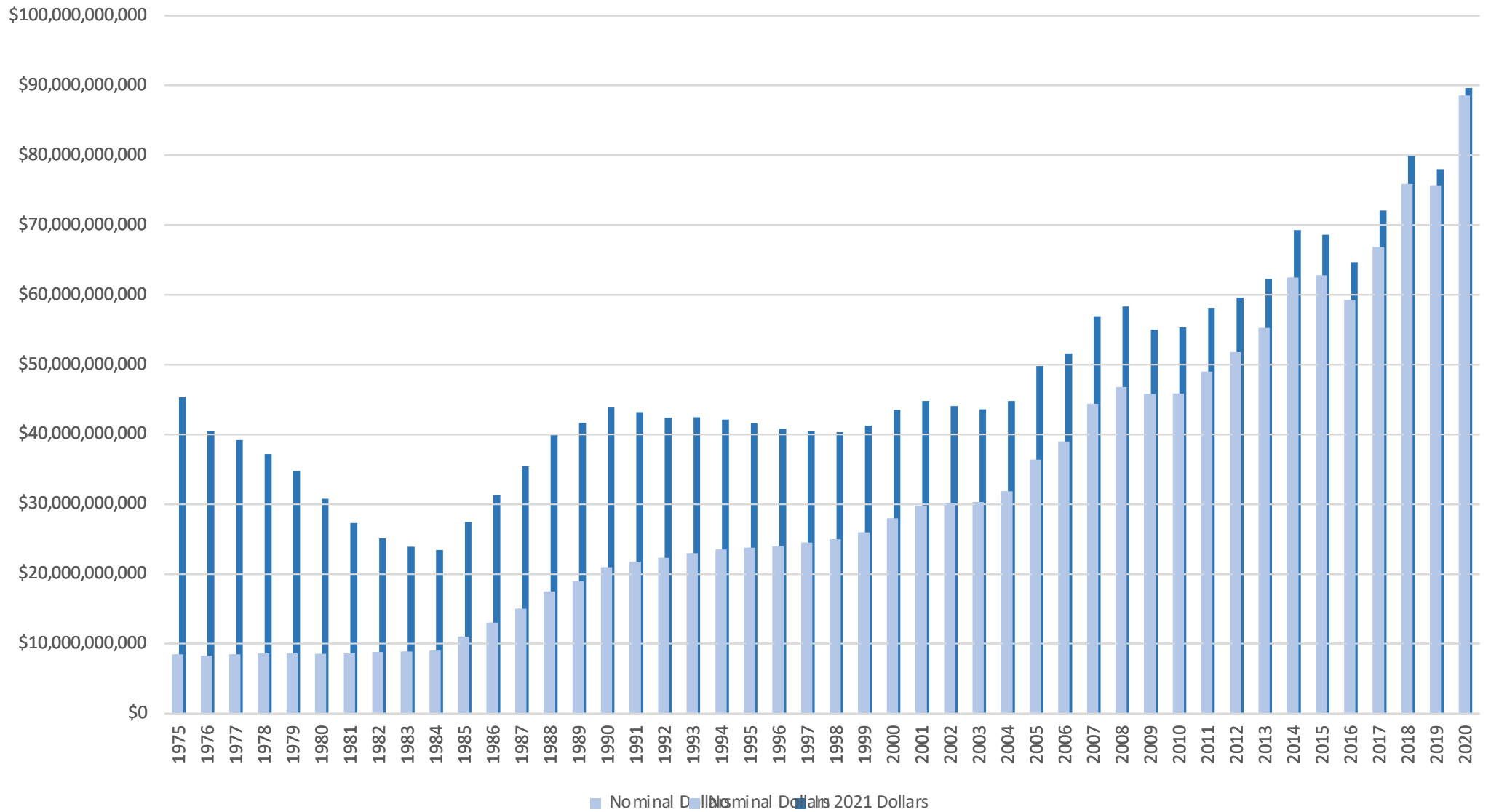


Center for Innovation in Social Science  
Grant Seeking Workshop February 2022

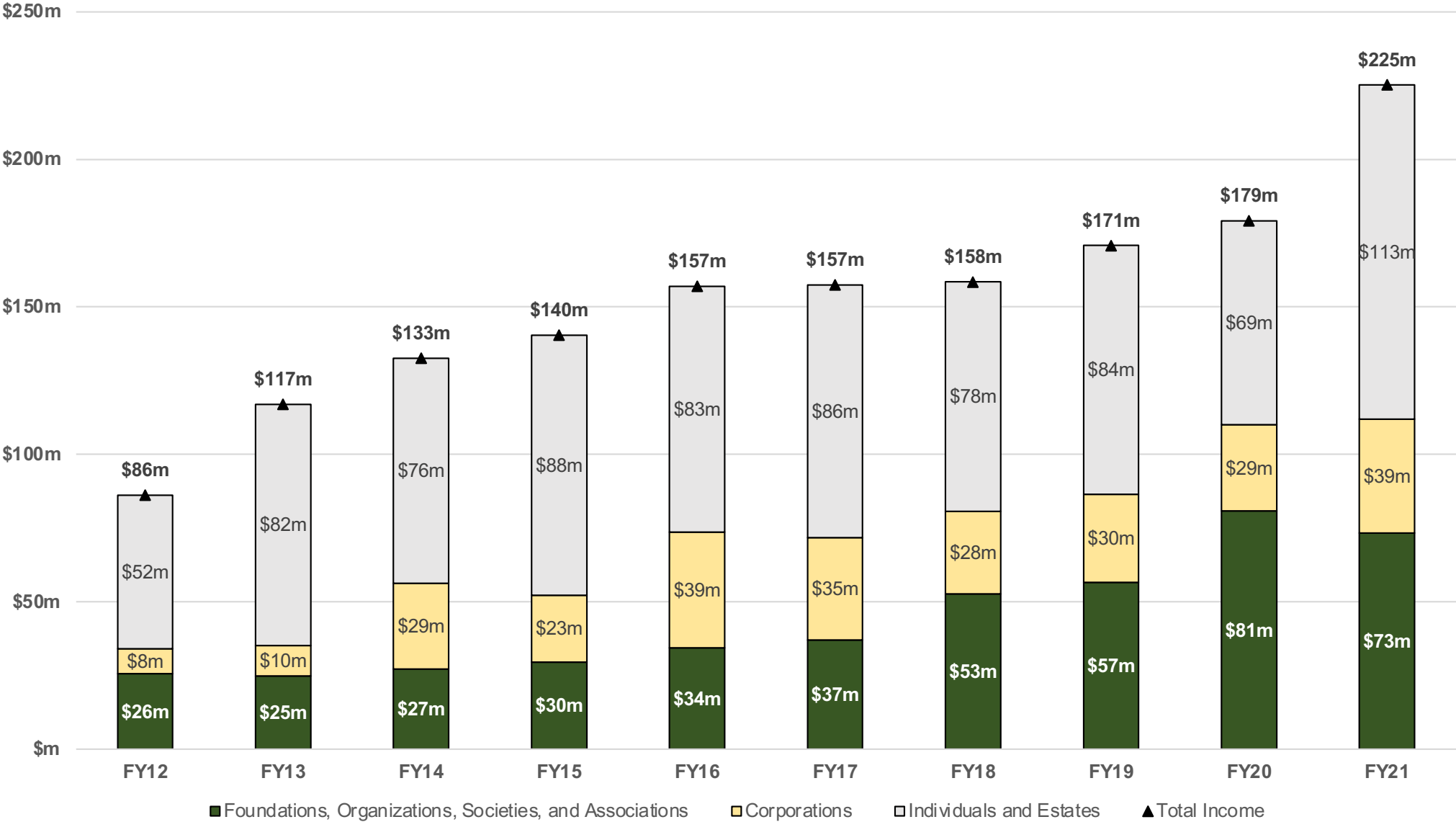
# Foundation Relations (FR) team



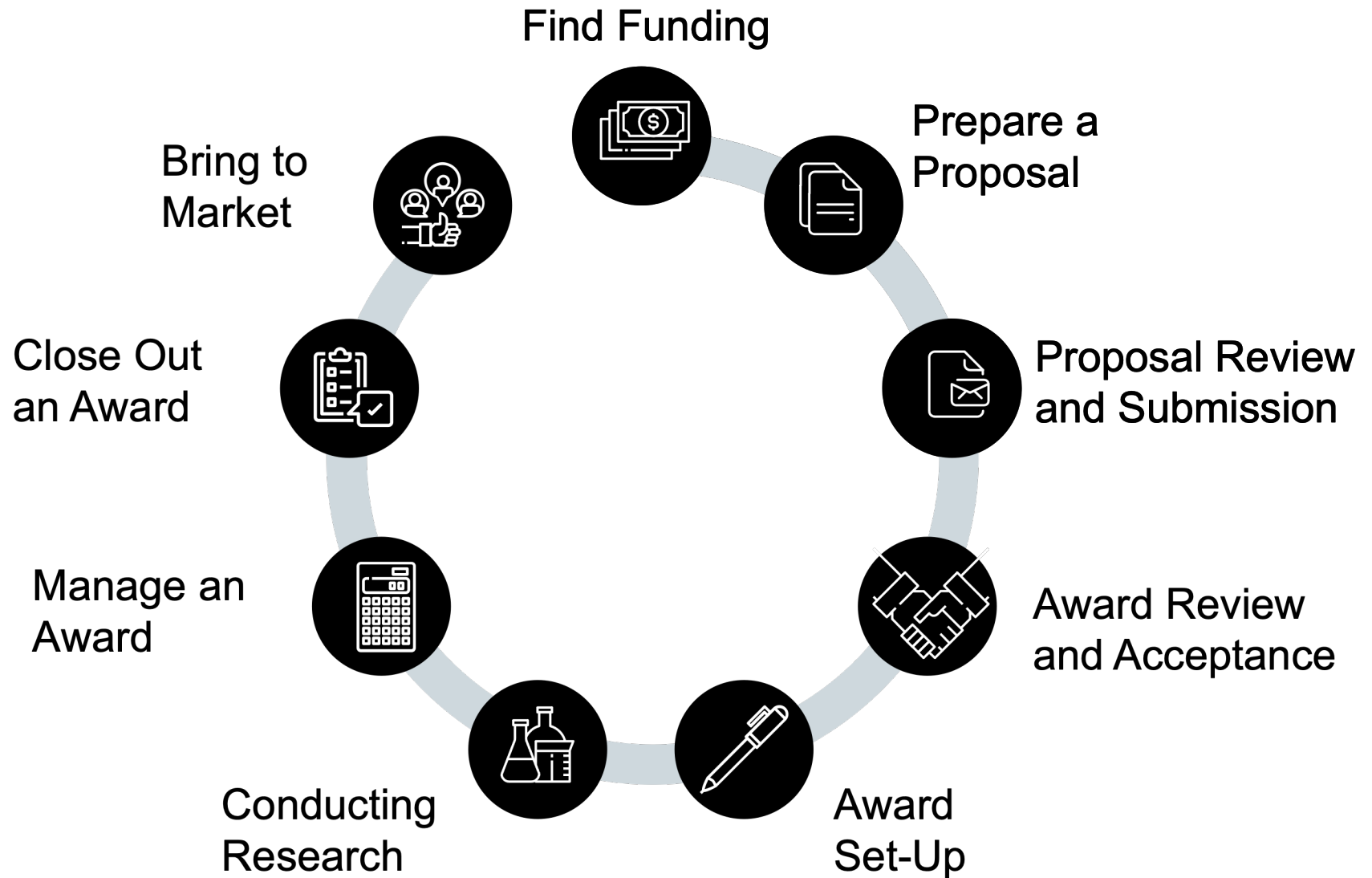
# Foundation Funding trends



# Philanthropic Income to BU



# What FR does: the grant lifecycle



# What FR does: a closer look



**Identification:**  
targeted RFP distribution;  
early career roadmaps



**Cultivation:**  
leverage alumni  
connections; info sessions  
w/ funders



**Solicitation:**  
drafting/editing/  
reviewing; peripheral  
components;  
proposal library

<https://www.bu.edu/foundations/>

# FR Resources: successful proposal library



## Proposal Library

Home + New Page details

Recycle bin

Edit

We have compiled a library of successful proposals submitted by BU faculty members to external funders. These proposals are available to members of BU's research community to provide insight and ideas regarding level of content, structure, language style, and format for grant-seekers. ***These proposals are for reference only and should not be distributed beyond the BU community.***

### Looking for further assistance?

- For foundation funding, contact [Foundation Relations](#).
- For federal funding, contact [Federal Relations](#).

Documents > Private Foundations [See all](#)

+ New Upload Edit in grid view Share Copy link All Documents

Name

Alfred P. Sloan Foundation

Andrew W. Mellon Foundation

Brain & Behavior Research Found...

BrightFocus Foundation

Craig H. Neilson Foundation

Cure Alzheimer's Fund

Doris Duke Charitable Foundation

<https://bushare.sharepoint.com/sites/Proposal-Library>



# Early Career Faculty Roadmaps

Foundation/Organization	Program	Deadline	Program Synopsis	Amount	IDC Policy	Eligibility Criteria
American Academy of Arts and Sciences	<a href="#">Hellman Fellowship in Science and Technology Policy</a>	January 11, 2021	The program provides an opportunity for an early-career professional with training in science or engineering to learn about a career in public policy and administration. While in residence.	up to \$67,000 (Starting range \$62K - \$67K, commensurate with experience plus a full		Applicants must have a Ph.D. in an area of science or engineering and have some experience or a
American Educational Research Association	<a href="#">Research Grants Program</a>	May 12, 2021	The program supports highly competitive studies using rigorous quantitative methods to examine large-scale, education-related data. This research and training program is designed to advance	Up to \$35,000		Research Grants are available for faculty at institutions of higher education, postdoctoral researchers.
Royal Swedish Academy of Sciences (Kungl. Vetenskapsakademien)	<a href="#">Scholarships: General Announcement for Social Sciences</a>	January 15, 2021	This scholarship provides funding intended for Economics or for other purposes in Social sciences. Examples of projects that may be granted are:	SEK 500,000 (~\$56,870) – postdoctoral research SEK 300,000 (~\$34,100) –		Doctoral students and postdoctoral researchers are eligible. Applicants who were awarded a PhD in the past
Russell Sage Foundation	<a href="#">Early-Career Behavioral Economics Conference</a>	December 15, 2020	The goal of this conference is to provide a platform for researchers who are early- or mid-career to present their research and receive feedback on their work. The conference seeks to promote the	There is no conference fee. Conference meals will be covered for invited		There is no strict eligibility rule to apply. Any early- or mid-career behavioral economist is invited to
Russell Sage Foundation	<a href="#">Research Grants: Social, Political and Economic Inequality</a>	May 4, 2021 (LOI); August 11, 2021 (invited proposal)	This program supports innovative research on the many factors that contribute to social, political and economic inequalities in the U.S., and the extent to which those inequalities affect social,	up to \$175,000 over 2 years	Trustee Grants are generally capped at \$175,000, including 15%	All applicants (both PIs and Co-PIs) must have a doctorate. The funder particularly
Russell Sage Foundation	<a href="#">Research Grants: Race, Ethnicity, and Immigration</a>	May 4, 2021 (LOI); August 11, 2021 (invited proposal)	This program seeks investigator-initiated research proposals on the social, economic, and political effects of the changing racial and ethnic composition of the U.S. population, including the transformation of communities and ideas about what it means to be	up to \$175,000	Trustee Grants are generally capped at \$175,000, including 15% indirect costs.	All applicants (both PIs and Co-PIs) must have a doctorate. The focus of the proposed research project must be on the United States.
Russell Sage Foundation	<a href="#">Research Grants: Behavioral Economics</a>	May 4, 2021 (LOI); August 11, 2021 (invited proposal)	The program on Behavioral Economics supports novel research that uses insights and methods from psychology, economics, sociology, political science and other social sciences to examine and improve social and living conditions in the United States. The funder seeks	up to \$175,000 over 2 years	Trustee Grants are generally capped at \$175,000, including 15% indirect costs.	All applicants (both PIs and Co-PIs) must have a doctorate. The funder particularly
Russell Sage Foundation	<a href="#">Future of Work</a>	May 4, 2021 (LOI); August 11, 2021 (invited proposal)	This program supports innovative research on the causes and consequences of changes in the quality of jobs for less- and moderately-skilled workers and their families. We seek investigator-	up to \$175,000		Both PIs and Co-PIs must have a doctorate. In rare circumstances, the funder may consider applications
Russell Sage Foundation	<a href="#">Pipeline Grants</a>	November 4, 2021	The funder seeks to advance innovative research on economic mobility and access to opportunity in the United States. It is particularly interested in research focused on diagnosing and	\$30,000-\$50,000		Only tenure track assistant professors, and associate professors who have been in the rank for less
Society of Family Planning	<a href="#">Changemakers in Family Planning</a>	June 17, 2020	The funder seeks to build and support an inclusive, multidisciplinary, skilled, and well-connected community with a shared focus on family planning. Underlying this strategy is the	up to \$56,000		PIs need not be a current SFP member in order to apply. These grants are open to scholars who:



# Early Career Roadmap process



**Step 1: Faculty member sends recent CV or biosketch to FR**



**Step 2: FR coordinates with Federal Relations**



**Step 3: Individualized roadmap is created**



**Step 4 (optional): Meet to discuss grant eligibility**

**Kristian Boschetto:** [kboschet@bu.edu](mailto:kboschet@bu.edu)

# Early Career Foundation Awards Won by BU Faculty (2015-2020)

- 9 Sloan Research Fellowships
- 5 Whitehall Foundation Grants
- 5 NARSAD Young Investigator Grants from the Brain and Behavior Research Foundation
- 4 American Heart Association Career Development Awards
- 2 Breakthrough Prizes New Horizons in Fundamental Physics
- 2 Simons Foundation Investigators
- 2 Smith Family Biomedical Research Awards
- 2 Kinship Foundation Searle Scholars
- 2 Elsa U. Pardee Foundation New Investigators
- 2 Burroughs Wellcome Career Awards at the Scientific Interface
- 2 Klingenstein-Simons Neuroscience Fellows
- 2 Searle Scholar Awards

# Foundation Relations Contacts

[www.bu.edu/foundations](http://www.bu.edu/foundations)

[ofr@bu.edu](mailto:ofr@bu.edu)

## To request an early career roadmap

Kristian Boschetto, Senior Development Associate

[kboschet@bu.edu](mailto:kboschet@bu.edu)

## For questions about funding opportunities in the social sciences

Cecilia V. Lalama, Associate Director

[clalama@bu.edu](mailto:clalama@bu.edu)