

# PEOPLE, PLACE & PRACTICE

*Come join the movement!*

**Madhu Dutta-Koehler, PhD**  
**Director, City Planning and Urban Affairs**  
**Associate Professor of the Practice**  
**President, Urbanability 501©3**











**152000** deaths

**208** days

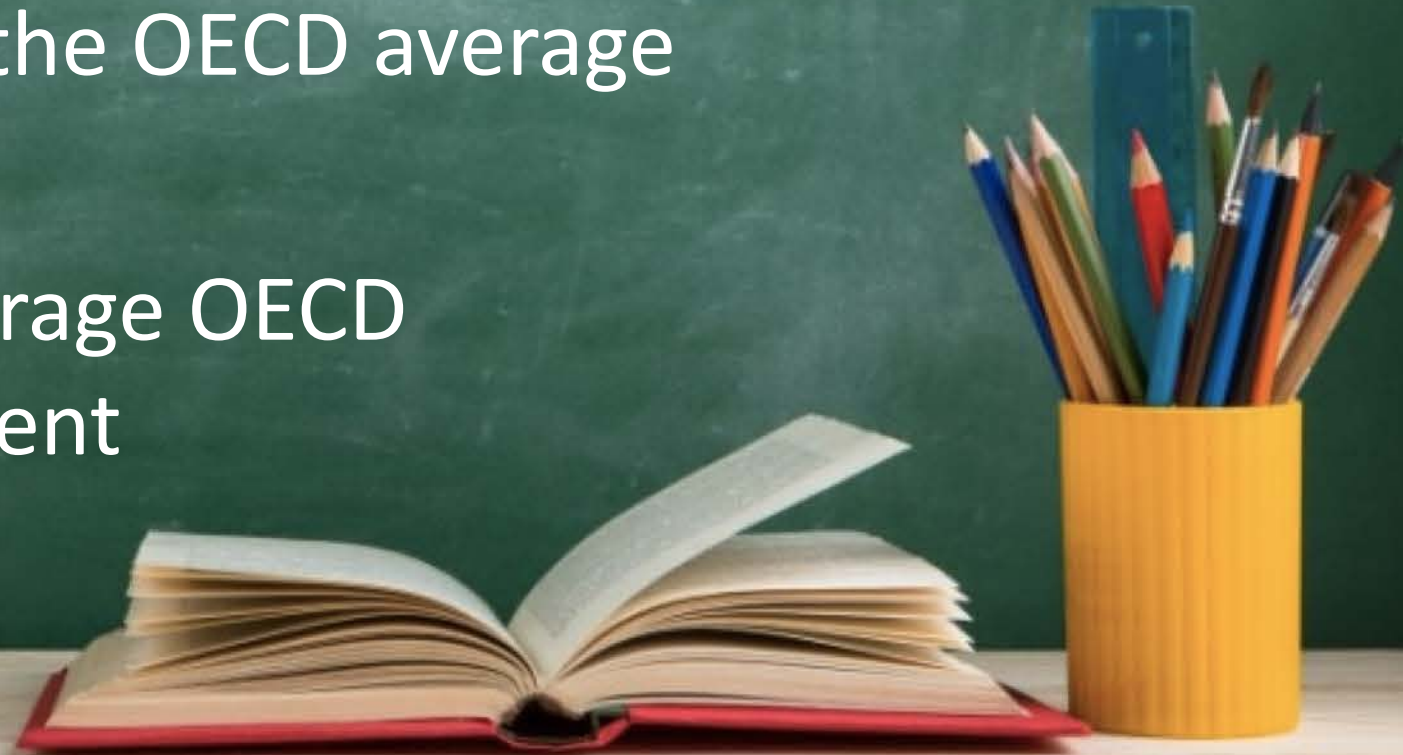
**732** deaths per day

**3,700,000,000,000**  
\$ annual spending on healthcare

**13,084** \$ per student

**39** % higher than the OECD average

**25** ranking for average OECD  
school enrollment



WHY IS THERE SUCH A DISCONNECT  
BETWEEN **SPENDING** AND **OUTCOME**?

HOW DO WE PLAN  
FOR  
*(all)* PEOPLE and PLACES???





Once upon a time....





Illustration by Emeric L. Kennard

# Our policy and planning instruments are *(almost always)* **BASED ON QUANTITATIVE OUTCOMES**

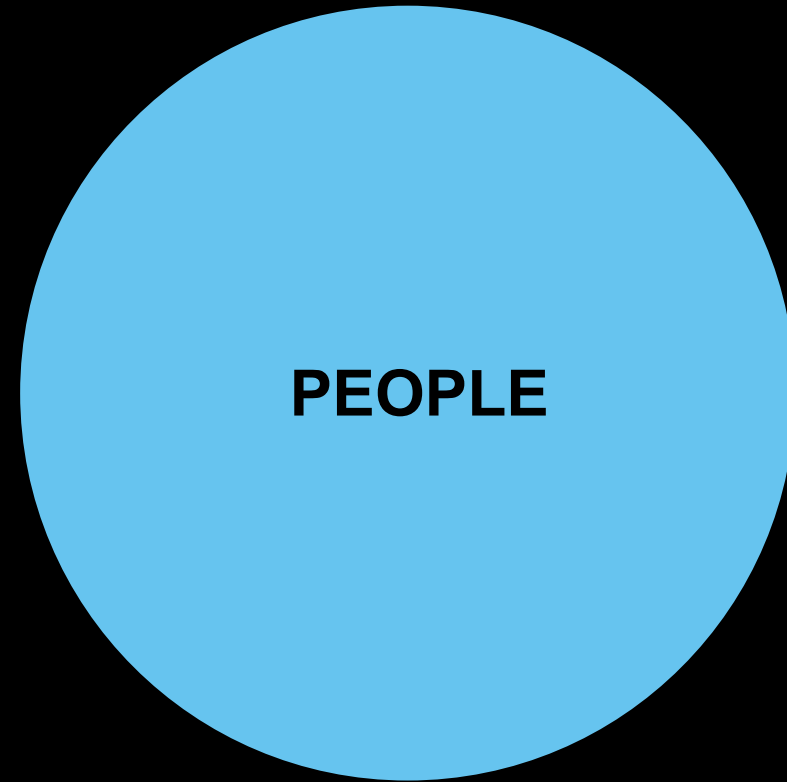
## **PLACE-BASED**

Shops  
Parks

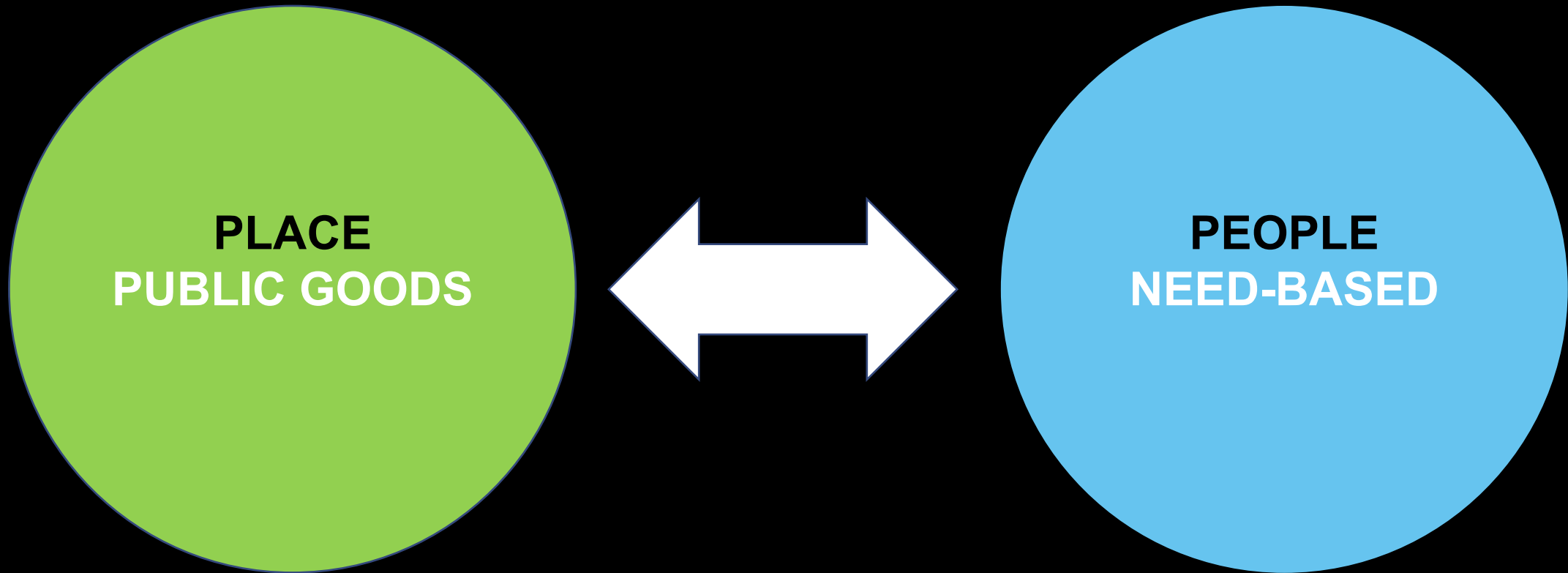
## **PEOPLE-BASED**

Vouchers  
Income-tax breaks

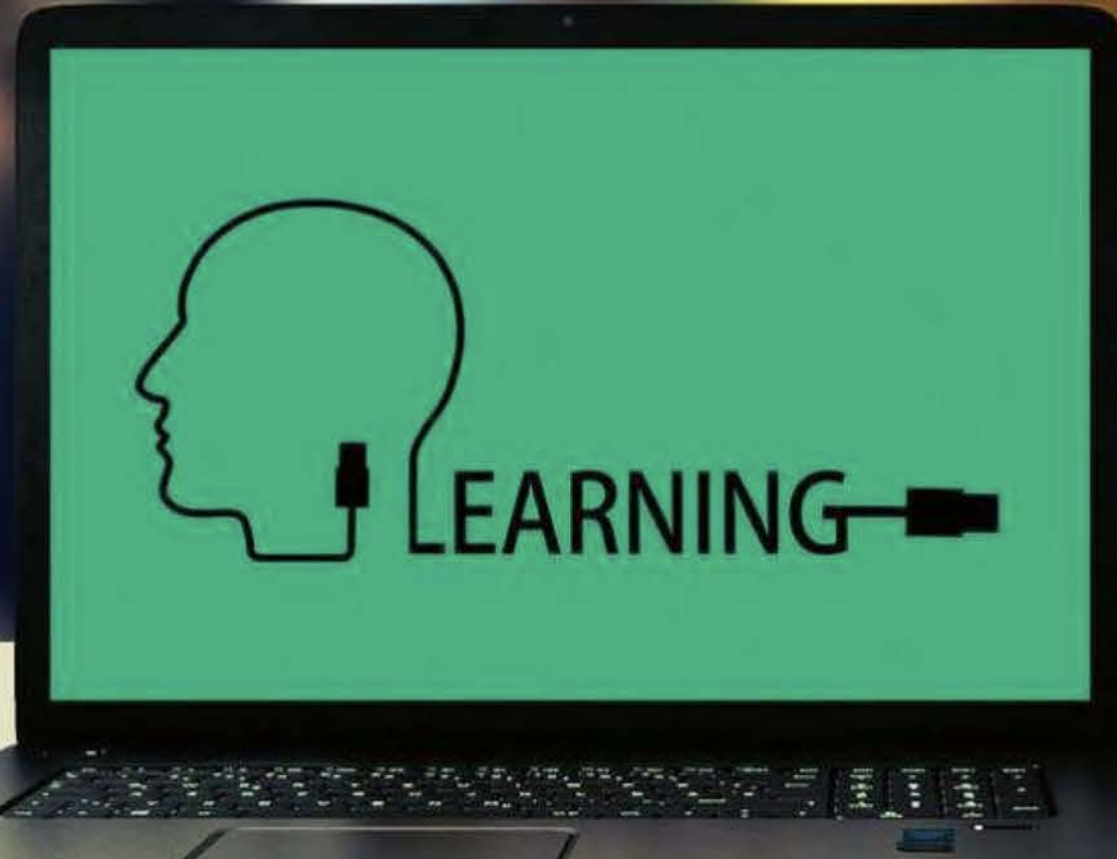
# THE SWEET SPOT



# What matters now? What should we prioritize?



# The future of education



# Transportation





# The role of our cities

An aerial photograph of a city skyline at dusk. The sky is a deep blue, and the city lights are beginning to glow. In the foreground, a large, modern glass skyscraper stands out, reflecting the ambient light. To its right, another tall building is under construction, with a crane visible. The city extends to the water's edge, with various buildings and structures. In the background, a large body of water is visible, with some islands and bridges. The overall scene is a vibrant and detailed representation of a modern urban environment.

# The future of healthcare



**We are only as strong  
as our weakest link!**



**PEOPLE**



**PLACE**

**PRACTICE**

**Plan for the greatest benefits for the largest population (+ MOGO)**

**Prioritize equity of outcomes above all else.**

**Aim for the sweet spot (maximization of co-benefits)**

**CONTEXT MATTERS ALWAYS!**



SARS-CoV-2  
2019-nCoV  
COVID

# PEOPLE FIRST

## Come join the movement!

#humansofcityplanning. #letsbereal #BUCPUA

# THE NEW POSSIBLE

the post-pandemic BU CITY series

Short talks + Q&A w/ industry experts

Hosted by CITY PLANNING & URBAN AFFAIRS, MET COLLEGE  
BOSTON UNIVERSITY

**PEOPLE  
PLACE & PRACTICE**  
Come join the movement!  
FRI, July 31, 11:30AM

**THE CHANGING  
FACE OF  
TRANSPORTATION**  
WED, AUGUST 5, 6PM

**GLOBALIZATION:  
PANDEMICS &  
PLANNING**  
FRI, AUGUST 14, 11:30AM

**DATA  
&  
CITIES**  
WED, AUGUST 19, 6PM

**MEGA-  
URBANIZATION  
& SUSTAINABILITY**  
The case of Africa  
WED, AUGUST 26, 6PM

**RSVP + More Info**  
**All welcome. Free participation**

<http://www.bu.edu/cityplanning/thenewpossiblecity>

