

# Health Center Research Bios (in alpha order)

Boston Health Care  
for the Homeless  
Program

Codman Square  
Health Center

DotHouse Health

East Boston  
Neighborhood  
Health Center

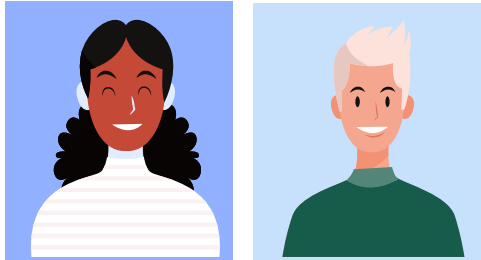
Greater Roslindale  
Medical & Dental  
Center

Manet Community  
Health Center

Mattapan  
Community Health  
Center

South Boston  
Community Health  
Center

Upham's Corner  
Health Center



## Contact Info

<b>Research Liaison</b>	Emily Hall, FNP, MPH ( <a href="mailto:institute@bhchp.org">institute@bhchp.org</a> )
<b>CMO</b>	Denise De Las Nueces, MD
<b>Interim CEO</b>	Denise De Las Nueces, MD

## Clinic Info

Service Area	Boston & Surrounding Communities	
Number of Sites	40	
Primary Care Patients	10,174	FWA# 00021231
Annual Clinic Visits	97,777	Expiration: 1/14/2026

## Patient Demographics

Male	68%	Asian/Pacific Islander	1.1%
Female	32%	Black/African American	39%
Medicaid	66%	White	46.5%
Primary Language not English	13%	Hispanic/Latino	22%
Most Common Languages Spoken	English, Spanish, Haitian Creole		

[Link to Full UDS Data Set](#)

<https://www.bhchp.org/>

## Research Priority Topics

- Health impacts of homelessness
- SUD including OUD, overdose, polysubstance use, racial and ethnic inequities in SUD care, harm reduction, supervised consumption
- Tobacco use disorder
- HIV including prevention among PWID, med adherence, housing
- HCV
- Public health implications of policies impacting people experiencing homelessness
- Cancer disparities
- Aging and homelessness
- Women, children, and families experiencing homelessness

## Best Practices: Research Methodology

BHCHP has supported and conducted research projects spanning a wide range of methodologies, including retrospective analyses of electronic health record data, cross-sectional surveys, prospective observational studies, clinical trials, and qualitative inquiries.

The proposed methodology should be appropriate to the research question being examined and feasible to execute.

Please note that student-led “scholarly projects” are rarely approved.



### Contact Info

<b>Research Liaison</b>	Angela McLaughlin, MD ( <a href="mailto:angela.mclaughlin@codman.org">angela.mclaughlin@codman.org</a> )
<b>CMO</b>	Renee Crichlow, MD
<b>CEO</b>	Sandra Cotterell, BSN

### Clinic Info

Service Area	Dorchester & Surrounding Communities	
Number of Sites	2	
Primary Care Patients	23,616	FWA# 00001457
Annual Clinic Visits	104,080	Exp: 2/20/2023 (renewal pending)

### Patient Demographics

Male	41%	Asian/Pacific Islander	1.5%
Female	59%	Black/African American	70.6%
Medicaid	42%	White	6.1%
Primary Language not English	20%	Hispanic/Latino	9.9%
Most Common Languages Spoken	English, Haitian Creole, Spanish		

[Link to Full UDS Data Set](#)

<https://www.codman.org/>

### Research Priority Topics

- Improving systems and delivery of care that promote social and racial health equity

### Best Practices: Research Methodology

- Engagement with the CHC staff prior to development of the final research methodology whenever possible
- Research that provides health center staff with training, expertise, support or resources that align with our own goals
- Researchers who seek to understand CHC flow in order to develop a process that will enhance flow or outcomes

## Contact Info

<b>Research Liaison</b>	Angela McLaughlin, MD ( <a href="mailto:angela.mclaughlin@codman.org">angela.mclaughlin@codman.org</a> )
<b>CMO</b>	Monica Vohra, MD
<b>CEO</b>	Michelle Nadow, MPA

## Clinic Info

Service Area	Dorchester & Surrounding Communities	
Number of Sites	1	
Primary Care Patients	19,867	FWA# 00008096
Annual Clinic Visits	81,061	Expiration: 9/24/2020

## Patient Demographics

Male	42%	Asian/Pacific Islander	37.4%
Female	58%	Black/African American	24.5%
Medicaid	43%	White	11.1%
Primary Language not English	48%	Hispanic/Latino	17.8%
Most Common Languages Spoken	Provided by CHCs		

[Link to Full UDS Data Set](#)

<http://www.dorchesterhouse.org/>

## Research Priority Topics

- Coming Soon

## Best Practices: Research Methodology

- Coming Soon

## Contact Info

<b>Research Liaison</b>	Celia Bora, DNP ( <a href="mailto:research@ebnhc.org">research@ebnhc.org</a> )	
<b>CMO</b>	Jackie Fantes, MD	
<b>CEO</b>	Greg Wilmot, MBA	

## Clinic Info

Service Area	East Boston & Surrounding Communities	
Number of Sites	7	
Primary Care Patients	81,886	FWA# 00021553
Annual Clinic Visits		Expiration: 8/20/2024

## Patient Demographics

Male	44%	Asian/Pacific Islander	1.2%
Female	56%	Black/African American	9.4%
Medicaid	38%	White	18.7%
Primary Language not English	62%	Hispanic/Latino	73.5%
Most Common Languages Spoken	Spanish, Portuguese, Arabic, Italian, English		

[Link to Full UDS Data Set](#)

<https://ebnhc.org/> & <https://sechc.org/se/>

## Research Priority Topics

- Research that seeks to improve system level changes, or develops strategies to improve health equity in disenfranchised communities
- Research addressing implementation of evidence-based practices or clinical practice guidelines

## Best Practices: Research Methodology

- Engagement with EBNHC staff prior to and during the research process to tailor research questions and methodology to meet our patients needs and ensure feasibility
- Research that provides staff with education, resources or supports that align with EBNHC's mission
- Emphasis on community engaged research

## Contact Info

<b>Research Liaison</b>	Arielle Albert, MHA ( <a href="mailto:Arielle.albert@bmc.org">Arielle.albert@bmc.org</a> )	
<b>CMO</b>	Jennifer Trieu, MD	
<b>CEO</b>	Courtney Urick, RN	

## Clinic Info

Service Area	Roslindale, Hyde Park, West Roxbury	
Number of Sites	1	
Primary Care Patients	7,580	FWA# 00023612
Annual Clinic Visits	32,220	Expiration: 6/4/2025

## Patient Demographics

Male	38%	Asian/Pacific Islander	4.24%
Female	36%	Black/African American	39.02%
Medicaid	58%	White	47.47%
Primary Language not English	26%	Hispanic/Latino	16.6%
Most Common Languages Spoken	English, Spanish, Haitian Creole, Albanian, Portuguese, Greek		

<https://www.roslindale.org/>

## Research Priority Topics

- **Operations:** treatment cost analysis, wait-time reduction, medical equipment utilization analysis
- **Population Health:** diabetes (A1c), health equity (health access/affordability), needs assessment, cancer prevention, chronic conditions, hypertension, pediatric immunization, COVID-19
- **Behavioral Health**

## Best Practices: Research Methodology

- **Study methodologies:** qualitative surveys, focus groups, 1:1 interviews, secondary data analysis (contracted out)
- **Workflow considerations:** integrating SDOH into clinical practice, flowcharts, written-workflows (step-by-step/ if-then statements)



## Contact Info

<b>Research Liaison</b>	Marjanna Barber-Dubois, MPH ( <a href="mailto:mbdubois@manetchc.org">mbdubois@manetchc.org</a> )
<b>CMO</b>	Lily Young, MD
<b>CEO</b>	Cynthia Sierra, MA

## Clinic Info

Service Area	Quincy, Hull, Taunton, Attleboro	
Number of Sites	6	
Primary Care Patients	20,202	FWA# 00008094
Annual Clinic Visits	75,670	Expiration: <b>4/22/2021</b>

## Research Priority Topics

- Preventative meds
- Cancer screenings
- Vaccine trials
- Chronic disease

## Patient Demographics

Male	48%	Asian/Pacific Islander	7.7%
Female	52%	Black/African American	5.6%
Medicaid	35%	White	53.4%
Primary Language not English	47%	Hispanic/Latino	4.9%
Most Common Languages Spoken	Chinese/Mandarin, Portuguese, Arabic, Spanish		

[Link to Full UDS Data Set](#)  
<https://www.manetchc.org>

## Best Practices: Research Methodology

Surveys, action and correctional. Those that involve patients going out to sites, we find patients will do if there is a stipend/incentive.

## Contact Info

<b>Research Liaison</b>	Howard Lanney, MD ( <a href="mailto:lanneyh@matchc.org">lanneyh@matchc.org</a> )	
<b>CMO</b>	Aimee Williams, MD	
<b>CEO</b>	Guale Valdez, MBA	

## Clinic Info

Service Area	Mattapan & Surrounding Communities	
Number of Sites	1	
Primary Care Patients	8,510	FWA# 00028888
Annual Clinic Visits	35,701	Expiration: 10/24/2024

## Patient Demographics

Male	41%	Asian/Pacific Islander	0.7%
Female	59%	Black/African American	77.8%
Medicaid	45%	White	2.3%
Primary Language not English	11%	Hispanic/Latino	6.3%
Most Common Languages Spoken	Provided by CHCs		

[Link to Full UDS Data Set](#)

<https://www.mattapanchc.org/>

## Research Priority Topics

- **Coming Soon**

## Best Practices: Research Methodology

- **Coming Soon**





# South Boston Community Health Center Research Bio

## Contact Info

<b>Research Liaison</b>	Elizabeth Wolff ( <a href="mailto:elwolff@sbchc.org">elwolff@sbchc.org</a> )	
<b>CMO</b>	Nisha Thakrar, MD	
<b>CEO</b>	William Halpin	

## Clinic Info

Service Area	South Boston	
Number of Sites	2	
Primary Care Patients	14,335	FWA# 00029703
Annual Clinic Visits	58,364	Expiration: 6/26/2025

## Patient Demographics

Male	44%	Asian/Pacific Islander	2.1%
Female	56%	Black/African American	4.8%
Medicaid	27%	White	54.9%
Primary Language not English	17%	Hispanic/Latino	12.4%
Most Common Languages Spoken	English, Albanian, Spanish		

[Link to Full UDS Data Set](#)

<https://www.sbchc.org/>

## Research Priority Topics

- COVID-19 long term syndromes
- Complex care management
- Population health
- SDOH
- SUD, Alcohol & Tobacco use
- 30 Min Primary Care Visits
- COVID risk reduction

## Best Practices: Research Methodology

- Model for Improvement
- PDSA Cycles
- Observational Study
- Planned Experimentation
- Factorial Analysis

## Contact Info

<b>Research Liaison</b>	n/a	
<b>CMO</b>	Marjorie Janvier , MD	
<b>CEO</b>	Jagdeep (Jay) Trivedi, MHA	

## Clinic Info

Service Area	North Dorchester & Adjacent Neighborhoods	
Number of Sites	5	
Primary Care Patients	9,959	FWA# 00001844
Annual Clinic Visits	53,480	Expiration: 7/25/2023

## Patient Demographics

Male	39%	Asian/Pacific Islander	2.8%
Female	61%	Black/African American	54.6%
Medicaid	47%	White	5.0%
Primary Language not English	48%	Hispanic/Latino	32.1%
Most Common Languages Spoken	Provided by CHCs		

[Link to Full UDS Data Set](#)

<https://uphamscornerhealthcenter.org/>

## Research Priority Topics

- Not accepting new projects at this time

## Best Practices: Research Methodology

- Not accepting new projects at this time