



2023 MCH Fellowship Fair Agenda: September 25-28, 2023

Location: [Zoom](#): Meeting ID: 988 7446 3692; Passcode: 251730

Diversity Scholars Leadership Program	Practice Fellowship	Research Fellowship
---------------------------------------	---------------------	---------------------

Monday, September 25th	
Time (EST)	Organization/Topic
9:30 - 10:00 AM	Massachusetts Department of Public Health <ol style="list-style-type: none"> Standardizing Data Collection for the Division for Children and Youth with Special Health Needs to Improve Program and Family Outcomes Launching a Holistic Health Transition Toolkit for Youth & Young Adults with Special Health Needs and Disabilities and Their Families
1:00 - 1:30 PM	MCH Center of Excellence <ol style="list-style-type: none"> C2 Podcast Fellowship MCH National Network Fellowship
1:30 - 2:00 PM	Prof. Gene Declerq: Analysis and Translation of Birth Data for Practice and Policy, including the website Birth by the Numbers
5:00 - 5:30 PM	Children’s HealthWatch: Supporting Communications and Advocacy for Equity & Cash Transfer Policies
5:30 - 6:00 PM	Prof. Collette Ncube: Racial and Ethnic Disparities in Severe Maternal Morbidity and Perinatal Mental Health Disorders

Tuesday, September 26th	
Time (EST)	Organization/Topic
9:30 - 10:00 AM	Massachusetts Department of Public Health <ol style="list-style-type: none"> MCH Policy & Planning Improving data linkages to the Pregnancy to Early Life Longitudinal Data System (PELL) using Machine Learning
1:00 - 1:30 PM	MCH Center of Excellence: Diversity Scholar Leadership Program (DSLPL)
1:30 - 2:00 PM	Prof. Monica Wang: H2GO! Study
5:00 - 5:30 PM	Education Development Center: Home Visiting Collaborative Improvement and Innovation Network (HV CoIIN)
5:30 - 6:00 PM	Prof. Jacey Greece <ol style="list-style-type: none"> Addressing School-Based Sexual Education through Advocacy, Communication, and Evaluation with EducateUS Assessing Gaps in Programs and Services for Families and Children in Michigan



Wednesday, September 27th	
Time (EST)	Organization/Topic
9:30 - 10:00 AM	Massachusetts Department of Public Health 1. Early Intervention Landscape Analyses 2. Landscape Analysis of Social Determinants of Health (SDoH) Efforts to Support Implementation of Maternal Child Health (MCH) Title V Block Grant Priorities
1:00 - 1:30 PM	Deborah Chassler & Prof. Linda Sprague-Martinez: HEALing Communities Study
1:30 - 2:00 PM	Prof. Sylvia Shangani: Postpartum engagement in HIV care among women living with HIV in the United States: Systematic Review
5:00 - 5:30 PM	Prof. Allegra Gordon: IMAGES Study
5:30 - 6:00 PM	Prof. Lora Sabin: Assessing Interventions to Support Adherence to Antiretroviral Therapy (ART) among Women and other Vulnerable Individuals in South Africa

Thursday, September 28th	
Time (EST)	Organization/Topic
9:30 - 10:00 AM	Boston Medical Center: PEERS - Integrating Public Health Preventive Screening and Intervention into Clinical Care for Adolescents
1:00 - 1:30 PM	Health Law Advocates: MHAP for Kids
1:30 - 2:00 PM	Prof. Kimberly Nelson: Adolescent Sexual Health Research
5:00 - 5:30 PM	Accompany Doula Care: Introduction to Project Management
5:30 - 6:00 PM	Prof. Jasmine Abrams: Enhancing Recruitment and Retention of BIPOC Participants in the "Pregnancy Study Online" (PRESTO)

Enhancing Recruitment and Retention of BIPOC Participants in the “Pregnancy Study Online” (PRESTO)

Professor: Jasmine Abrams, PhD

Department: Social and Behavioral Sciences, Yale School of Public Health

Email: jasmine.abrams@yale.edu

Number of Fellows: One

Timeframe: December 2023 – December 2024

Infertility and spontaneous abortion (SAB) each affect 15-20% of reproductive-aged couples in the United States (U.S.), and there are large racial/ethnic disparities in both outcomes. As infertility and SAB exact an emotional and financial toll on affected couples, identifying modifiable risk factors for these outcomes in both partners is an important public health goal. The Pregnancy Study Online (PRESTO), a web-based North American preconception cohort study, addresses this goal.

PRESTO has enrolled more than 17,000 females and nearly 4,000 male partners during the preconception period, with 20% of participants identifying as Black, Indigenous, or People of Color (BIPOC). To increase enrollment among BIPOC participants, we will use qualitative methods to identify facilitators and barriers to participation and identify strategies to improve BIPOC enrollment and retention.

By joining our research team, the fellow(s) will be able to participate in numerous aspects of this project. Depending on interests and skills, the fellow may help:

- Assist with participant recruitment
- Assist with qualitative data collection via focus groups
- Contribute to data management, coding, and analysis
- Assist with organizing meetings of the scientific and community advisory board
- Participate in manuscript development and presentation of findings at scholarly conferences

[Back to the top](#)

HEALing Communities Study: Self- and group-efficacy in the phases of group development

Supervisor & Mentor: Deborah Chassler, MSW
Linda Sprague Martinez, PhD

Department: Boston University School of Social Work

Email: chassler@bu.edu

Number of Fellows: One

Timeframe: December 2023 – December 2024

Learn about how a Community Advisory Board works – from the inside out! Over the past four years of the HEALing Communities Study (HCS), a federally funded four-state research study to examine a community engaged coalition-driven effort to reduce fatal overdoses, the Massachusetts HCS Community Advisory Board (CAB) has met monthly to advise the study. A preliminary case study examines CAB member reflections on their involvement in the CAB including personal and professional benefits of CAB participation. This qualitative research effort will analyze the minutes from the zoom and in-person meetings over four years to learn more about the formation of group identity, and self- and group-efficacy across phases of group development. The field of community engagement and the development of community advisory boards is rich with suggested guidelines for successful CAB development. In the present study, we will delve into the phases of group development (Tuckman’s forming, storming, norming, performing, and adjourning), with a real-time written record of CAB member and HCS staff participation, the details of meeting minutes, to better understand the internal processes supporting group development and self- and group efficacy for MA HCS CAB members.

The fellow will work on qualitative research and writing collaboratively with the study team, including two CAB members, Deborah, and Linda Sprague Martinez with opportunities to:

- Develop and monitor a tracking system for the data analysis
- Conduct a literature review
- Participate in qualitative coding
- Analyze data
- Co-author an academic manuscript

[Back to the top](#)

Analysis and Translation of Birth Data for Practice and Policy, including the website Birth by the Numbers

Professor: Eugene Declercq

Email: declercq@bu.edu

Number of Fellows: One

Timeframe: November 2023 - December 2024

The project needs a student with some data skills and a great deal of enthusiasm about working with birth data to work on three different projects, specifically:

(1) the *analysis of U.S. national birth certificate data* or data from Listening to Mothers related to multiple questions concerning current birth practices. The project will be developed by the student into an abstract for a presentation at the 2024 APHA meeting which the student is expected to present with Dr. Declercq's support.

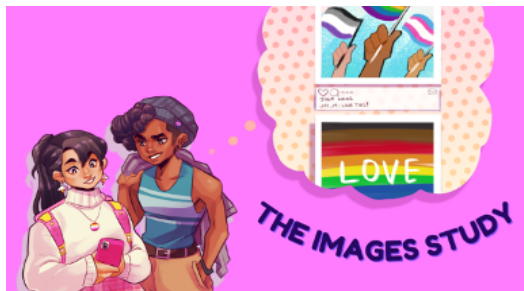
(2) The second part of the fellowship will involve *working with the team of students who develop materials for and oversee and help with the design of the website "Birth by the Numbers."*

(www.birthbythenumbers.org). The fellow will work on website development and support, with a particular emphasis on developing up-to-date resources and presentations, including mapping, on childbirth data that can be downloaded for use in college classrooms and made available to students, faculty and the press.

(3) *Exploring data on maternal mortality in the U.S.* Fellow will work with Dr. Declercq on the examination of reports from state maternal mortality review committees and publicly available data to examine patterns and trends in maternal mortality.

[Back to the top](#)

The Interactive Media and Gender-Related Stressors & Strengths (IMAGES) Study for Transgender and Gender Diverse Young Adults



Professor: Allegra Gordon, ScD, MPH

Department: Community Health Sciences

Email: allegrag@bu.edu

Number of Fellows: One

Timeframe: Dec 2023 – Dec 2024

The IMAGES Study is a mixed methods research project motivated by mounting epidemiologic evidence that transgender and gender diverse young people are at elevated risk for substance use and eating disorders relative to cisgender peers. This project aims to improve our understanding of the influence of online social environments on young adult stress and coping behaviors. In Phase 1 of the study we conducted a “daily diary” study (small surveys every day over 10 days) with 150 transgender and gender diverse young adults (ages 18-25) and follow-up interviews with a subsample of 30 participants.

We are now beginning Phase 2, in which we will be focused on analyzing data from Phase 1, writing up results, and working with a Community Advisory Board to use these findings to inform a critical social media literacy intervention tailored to the needs and desires of diverse transgender young adults.

We are seeking a student with strong writing and communication skills and an interest in intersectional LGBTQ health equity research to join our team for the year. The Fellow will work directly with Dr. Gordon on data analysis, interpretation, dissemination. Depending on the project timeline, the Fellow may also work on intervention development activities. Key activities may include: (a) community engagement and compiling learnings from Community Advisory Board meetings, (b) being trained in qualitative coding and qualitative data analysis, and (3) designing dissemination materials (e.g., infographic). Activities may also include quantitative data analysis and write-ups (depending on the Fellow’s experience). The project can be developed by the Fellow into an abstract for presentation at the 2024 American Public Health Association annual meeting or another conference relevant to the Fellow’s career goals. For interested students with *quantitative* data analysis expertise, there is an additional opportunity to conduct analysis and co-author a manuscript on eating disorders risk factors in a national sample of 700 gender- and racially diverse transgender young adults from a separate project (the Body Image, Sexual Health, and Relationships Project [B*SHARP]).

[Back to the top](#)

Addressing School-Based Sexual Education through Advocacy, Communication, and Evaluation with EducateUS

Professor: Jacey A. Greece, DSc, MPH
Department: Community Health Sciences
Email: jabloom@bu.edu
Number of Fellows: 1
Timeframe: November 2023 – December 2024

The School-Based Sexual Education Project partners BUSPH with [EducateUS](#). EducateUS is building a movement of voters laser-focused on advancing high-quality sex education policy and implementation across the country. We believe that comprehensive public sex education can change the world. Our ultimate goal is to bring about a complete transformation of K-12 public sex education in the United States, in order to foster a new generation of Americans who are secure in their own bodily sovereignty, recognize and respect that sovereignty in everyone else regardless of race, place, creed, class or gender, know all the essential facts about how bodies work, and are fully prepared to flourish in loving relationship with themselves and others.

With the imminent passage of the new health education frameworks currently under consideration by the MA Board of Elementary and Secondary Education (BESE), opponents of sex ed in MA are more activated than ever. And because the frameworks do not have the force of law, they are going to double down on their tactics of pressuring individual school districts to reject the frameworks, and inclusive sex and relationships ed in general. We're seeking a fellow to help us a) learn about which opposition tactics are working with which populations to weaken support for school-based sex and relationships education, b) develop methods to inoculate against and counteract their tactics, building durable support for school-based sex ed in MA, and c) write a plan for evaluation of the effectiveness of these approaches, so we can seek funding to evaluate and then implement best practices more widely in MA and beyond.

This project needs students with strong literature review, writing, and communication skills and an interest in advocacy, communication, and evaluation to help the project team address the following aims: 1) conduct a literature review of existing sexual education efforts across the United States and assess which ones are most effective; 2) compile evidence on the opposition tactics that are most effective and to which stakeholder groups they address; 3) summarize the barriers to adoption of sexual education in elementary school, middle school, and high school by examining all levels of the social ecological model; 4) develop methods and communication to counteract opposition tactics with a specific focus on certain stakeholder groups; 5) develop a plan for stakeholder engagement in supporting school-based sexual education; 6) develop an evaluation plan to examine both process and outcome of the plan in step 6 including a logic model, timeline, and evaluation questions; and, 7) draft a grant application to fund the developed plan and evaluation. In collaboration with the project team, the student will have the opportunity to co-author a manuscript on their findings and prepare national conference presentations.

[Back to the top](#)

Assessing Gaps in Programs and Services for Families and Children in Michigan

Professor: Jacey A. Greece, DSc, MPH
Department: Community Health Sciences
Email: jabloom@bu.edu
Number of Fellows: 1-2
Timeframe: November 2023 – December 2024

The **Formative Evaluation of Services for Families and Children**, conducted in collaboration with the Barry Eaton County Health Department in Michigan and Winthrop Department of Public Health & Clinical Services in Massachusetts, aims to examine gaps in services for children particularly around substance use, trauma, violence, and food insecurity. Barry Eaton County is a rural county in Michigan that has been mentored by the Winthrop Department of Public Health & Clinical Services this past year on cross-agency community approaches to substance use. As part of this effort, more information is emerging about the various needs of residents in the county and the complicated nature of engaging stakeholders. It is clear there is a need for enhancements to the Health Department's efforts through cross-sector collaboration, expansion of existing programs, and development of new efforts.

In particular, the formative evaluation will explore the current context in Barry Eaton County and the existing programs and policies in place for families and children around substance use and opioid overdose; sexual assault and domestic violence; cohesion and resiliency, particularly around adverse childhood experiences and outcomes; and, hunger and food insecurity. The goal will be to engage stakeholders to identify areas for improvement in programs, policies, and communication around these issues; examine existing literature for comprehensive system-level approaches; and, recommend interventions to address these issues within the county with a particular focus on promoting beneficial outcomes for families and children.

This project needs students with strong literature review, writing, and communication skills and an interest in community-based interventions and communications to help the study team address the following aims: 1) determine stakeholders to further interview through a power and interest analysis; 2) draft and submit an Institutional Review Board (IRB) application to Boston University in order to conduct the formative evaluation; 3) develop and disseminate a survey to understand the interest and engagement of the stakeholders as well as current context and programs; 4) develop and conduct interviews with stakeholders within and around Barry Eaton County to assess perspectives and priorities; 5) conduct qualitative and quantitative analysis on the surveys and interviews, along with the study team, to issue recommendations for further intervention and efforts to address community trauma; 6) conduct a literature review to understand the background and scope of a variety of these issues in the U.S.; and, 7) draft a manuscript of the study, methods, results, and recommendations for submission to a journal. In collaboration with the study team, Barry Eaton County, and Winthrop, we plan to disseminate 2 manuscripts next year on these aims and the student will have the opportunity to co-author these manuscripts and prepare national conference presentations.

Other research questions can be explored in the formative evaluation including the impact of COVID-19 on families and children. This is flexible and the student can propose research ideas to the study team.

[Back to the top](#)

Racial and Ethnic Disparities in Severe Maternal Morbidity and Perinatal Mental Health Disorders

Professor: Collette N. Ncube, DrPH MPH MS

Department: Epidemiology

Email: ncube@bu.edu

Number of Fellows: 2

Timeframe: December 2023 – December 2024

Severe maternal morbidity (SMM) is defined as any significant unintended health outcomes experienced by women as result of pregnancy labor and/or delivery. SMM affects about 50,000 women in the United States every year, disproportionately affecting racial and ethnic minorities and causing substantial disability and financial burden. Perinatal mental health disorders are a common complication of the postpartum period, affecting 1 in 5 mothers, but disproportionately impacting socioeconomically and racially minoritized groups. These disorders have serious implications for maternal and child health.

The objectives of this project are to:

- Estimate the rate of mental health disorder diagnosis during pregnancy, at the time of birth hospitalization and in the postpartum period up to one year after birth, among various racial and ethnic groups in Massachusetts.
- Estimate whether the rate of SMM, at the time of the birth hospitalization, differs for individuals with and without pre-existing mental health disorders in Massachusetts. We will examine whether these rates vary across racial and ethnic groups.

We have experience engaging students in our work and look forward to welcoming another MCH research fellow(s) this year. Each fellow would be assigned to one of the above listed objectives. The student fellow(s) will 1) be instrumental in the analysis of a large statewide dataset, 2) create high quality tables and figures for publication in a scientific journal, and 3) review and synthesize the relevant literature. MCH research fellows joining the team will have the opportunity to contribute as co-author on the resulting manuscript and prepare presentations for national conferences. We plan to submit one manuscript by the end of the year. We are looking for students excited about this topic who also possess strong writing and data analysis skills. Proficiency in the use of Stata (preferred) or SAS is required.

[Back to the top](#)

Adolescent Sexual Health Research

Professor: Kimberly Nelson, PhD, MPH
Department: Community Health Sciences
Email: knel@bu.edu
Number of Fellows: One
Timeframe: Dec 2023 – Dec 2024

In this fellowship, a student will gain experience with data management, qualitative coding in NVivo, and presentation of qualitative and quantitative data for both scientific and general audiences. Data for this fellowship will come from two research studies focused on adolescent sexual health and wellbeing:

1. The Sex & COVID study is a longitudinal study that is following 2,000 adolescents across the US over 3.5 years via online surveys and has been examining the impact of the COVID-19 pandemic on sexual behavior and health among adolescents living in the United States since April 2022.
2. The iCARE study is examining the impact that minor consent laws have on US adolescents' access to and utilization of sexual healthcare services, as well as adolescents' knowledge of and attitudes toward these laws.

As a key member of the research team, the fellow will work directly with Professor Nelson and her team. Deliverables from this experience include: (1) qualitative analysis, including the development of qualitative codebooks and coding output, for both studies, (2) presentations of qualitative coding results following analysis, and (3) infographics that will communicate findings of the iCARE study to adolescents via social media.

[Back to the top](#)

Assessing Interventions to Support Adherence to Antiretroviral Therapy (ART) among Women and other Vulnerable Individuals in South Africa

Professor: Lora Sabin, PhD
Department: Global Health
Email: lsabin@bu.edu
Number of Fellows: One
Timeframe: Dec 2023 – Dec 2024

This project will equip a student with the skills and expertise to conduct analysis and draft various products related to a major randomized trial in South Africa. The trial is part of the SUSTAIN (Supporting Sustained HIV Treatment Adherence After Initiation) project, of which Dr. Sabin is a co-PI along with Dr. Catherine Orrell, an infectious diseases expert and physician based at the Desmond Tutu Health Foundation in Cape Town. The study began in 2021 and is funded by a NIH R01 grant. It will assess outcomes and implementation of multiple interventions to improve adherence to and retention in HIV treatment for individuals, including pregnant women and adolescents, beginning treatment in community clinics in Cape Town. The fellow will work with the study team on analysis of qualitative data (and possibly also quantitative and cost data, depending on the interests and skills of the student) related to the project, and help draft abstracts as well as a manuscript with the results of one or more analyses.

The fellow will work closely with Lora and potentially other BUSPH team members on these activities, depending on what emerges as most urgent and timely, and, specifically, engage in:

- Analyzing and interpreting qualitative, and possibly also quantitative data
- Drafting one or more abstracts, posters, or presentations
- Drafting a manuscript
- Drafting other study products and documents, as needed

[Back to the top](#)

Postpartum engagement in HIV care among women living with HIV in the United States: Systematic Review

Supervisor & Mentor: Sylvia Shangani, PhD (sylvia65@bu.edu)
Department: Community Health Sciences
Number of fellows: One
Timeframe: December 2023 – December 2024

The postpartum phase represents a critical time to retain women living with HIV in care to prevent mother-to-child transmission (PMCT) and to optimize maternal-child health. Antiretroviral therapy is recommended for all individuals living with HIV to reduce the risk of disease progression and prevent sexual transmission of HIV. These guidelines apply to postpartum women living with HIV. However, retaining women in HIV care remains a global challenge, particularly during the postpartum period. Postpartum women living with HIV constitute a potentially vulnerable group who may face challenges continuing their HIV care after childbirth. However, there is limited literature regarding engaging postpartum women living with HIV in care in the U.S. This project aims to undertake a comprehensive literature review to evaluate the extent of postpartum engagement in HIV care among women living with HIV. Additionally, it seeks to determine the factors that shape engagement in care, specifically considering the impact of social determinants of health. Lastly, this project aims to identify effective interventions that enhance the continuum of care for these women.

The fellow will work with other team members to review the literature, conduct data extraction and analysis, data synthesis, appraise the quality of articles related to postpartum engagement in HIV care, draft abstracts, and contribute to developing a systematic review manuscript. The fellow will work closely with Dr. Shangani on this systematic review.

The fellow will gain the following skills and experience in participating in this project:

1. Refine skills in systematic review, using rigorous search strategies
2. Appraise the quality of the evidence
3. Extract data, analyze and interpret systematic review findings
4. Write abstracts and posters for conference presentation
5. Participate in writing a manuscript and serve as co-author (Key deliverable)

[Back to the top](#)

H2GO Study



Professor: Monica Wang - Preventing Childhood Obesity Through Youth Empowerment

Timeframe: December 2023- December 2024

Project Description

This fellowship provides training and hands-on experience in the public health field, particularly in working directly with communities by integrating research and community-engagement skills to influence healthy behavior changes among children. This opportunity will focus on a community-based intervention to target childhood obesity, specifically in reducing consumption of sugar-sweetened beverages. The target population includes underserved children and families who are members of Boys & Girls Clubs throughout MA. As key members of the research team, fellows will work directly with Professor Wang and the Research Project Manager. Fellowship activities will build upon content and skills acquired in the classroom and include: assisting with program evaluation; survey administration and measurement of anthropometrics; data management; community engagement; and overall project monitoring. Additionally, fellows will have the opportunity to connect with skilled professionals to foster skills in areas of interest, including manuscript writing, networking, and professional development mentorship.

Please note that administrative tasks in this role are completed remotely. In-person activities include travel to study sites across Massachusetts and periodic team bonding events.

MCH Fellow duties include:

- Act as liaisons between the project and the Boys & Girls Club (BGC) sites.
- Recruit, screen, and obtain consent from parent/guardian participants.
- Travel to BGC sites across the state of Massachusetts for data collection.
 - Fellow must be able and willing to drive to sites.
 - Rental car services are provided for Fellows who do not have their own mode of transportation.
- Assist in intervention set-up and monitoring of intervention fidelity.
- Obtain anthropometric measurements from child participants at each study time point.
- Contact study participants at 2-, 6-, and 12-months to arrange and conduct follow-up Assessments.
- Communicate with study site partners.
- Attend and participate in weekly team meetings held via Zoom.

[Back to the top](#)

Introduction to Project Management

Accompany Doula Care



Supervisor & Mentor: Christina Gebel, MPH
(direct report) christina@accompanydoulacare.com

Location: Remote – virtual office

Background: Accompany Doula Care (also referred to as “Accompany”) is a Boston-based non-profit and professional home for community doulas focused on reducing health inequities and improving birth outcomes in MassHealth members through payers and two hospitals. Accompany was co-founded in 2016 by six doulas, three of whom are BUSPH alumni, who sought to fully integrate doulas into the healthcare system, such that every birthing person would have access to doula services, particularly those populations who experience healthcare inequities and could most benefit from doula care but may face barriers to accessing doula support. Accompany strives to center the client in his/her/their preferences for qualities and demographics in doula services, including race, ethnicity, and primary language spoken by matching the client with one of our over 20 community doulas who speak a variety of languages.

Accompany is seeking an MCH fellow to assist with social media presence, communications, client-facing evaluation tools, and building an onboarding and continuing education experience around the intersection of birth work and health equity.

Fellowship Description

The fellow will work closely with the Director of Grants & Strategic Partnerships (Gebel, SPH '14). While there are many activities related to this fellowship's goal, the fellow will work together with Accompany staff to carve out portions of that work that best match their skills and interests. Needs and interests at this time are listed in the bullets below.

Activities may include the following:

- Using programmatic data points for postings on Facebook and Instagram, utilizing Canva templates for visual appeal
- Disseminating the annual report findings to a variety of audiences
- Working with the data specialist, Jeannette Myrick (BUSPH alum), to explore client-facing data analysis through Compyle
- Working with the Director of Grants and strategic Partnerships to create an onboarding experience for new-to-Accompany doulas, focusing on the intersection of birth work and health equity
- Working with the Interim Executive Director to continue the quarterly newsletter

Additional Qualifications

A strong candidate will be detailed-oriented, creative, organized, have strong writing skills, demonstrate capacity to be a team player and ability to foster positive relationships with diverse stakeholders. A strong candidate will have a passion for maternal and child health, doula care, health equity, and reducing birth inequities. The ideal candidate will have a “jump right in” approach and can take initiative and work independently on projects in an organization, which tends to have a startup-like culture.

[Back to the top](#)

Integrating Public Health Preventive Screening and Intervention into Clinical Care for Adolescents Boston Medical Center



Supervisor & Mentor:

Rachel Thompson, MD
Assistant Professor of Pediatrics, BU Chobanian & Avedisian School of Medicine
Division of Pediatric Emergency Medicine
Rachel.Thompson@bmc.org

Location:

Partners in Equity and Empowerment through Resources and Support (PEERS)
Pediatric Emergency Department (PED)
Boston Medical Center (BMC)

Background

Adolescence is a critical period of development where sociocultural and economic factors can shape current and future health. While routine health care maintenance is the foundation for screening patients for the social factors that impact health, many adolescents cannot or do not access routine healthcare, instead visiting emergency departments (EDs) that are not structured to provide holistic, preventative care. Lack of consistent screening and early referral has the potential to perpetuate health inequities experienced by this vulnerable patient population at BMC, of whom 70% identify as racial/ethnic minorities.

Partners in Equity and Empowerment through Resources and Support (PEERS) is an inter-disciplinary program bringing together the combined strengths of fellows from the School of Public Health with medical student volunteers to bridge the capacity gap between what is and what *can be* provided in a pediatric ED and thus enable patients to receive holistic care where they are, rather than where pre-existing systems dictate. PEERS students provide this important screening to adolescent ED patients (ages 13-24yo) and in doing so, PEERS helps adolescent patients identify intrinsic motivations for developing healthier behaviors and connects them with Boston Medical Center and community resources that address the social factors that impact health outcomes and other concerns that the patients themselves identify. Through screening and follow up we hope to address the unmet resource needs that can impact the mental and physical health of BMC PED adolescents as well as help identify the barriers to accessing these resources.

Fellowship Description

Fellows (Health Promotion Advocates or HPAs) who are part of PEERS will integrate public health preventive screening and intervention into clinical care for adolescents and young adults ages 13-24. After obtaining permission from PED staff, HPAs will approach patients, explain the purpose of the survey, and get verbal consent to conduct the interview. HPAs will then administer an evidence-informed Pediatric ED Health and Safety Needs Survey to identify patient needs, assess their interest in referrals and resources, and provide them, if they are interested, with

health information and a list of BMC- and community-based resources that will facilitate patients' connection to social, public health, and medical support services. HPAs will use REDCap to collect and analyze health and safety data (e.g., COVID impact, alcohol and other substance use, behavioral and sexual health, food, housing, safety, education, and other social factors that impact health), maintain a list of referrals, and present results to PED leadership to enhance and improve services. HPAs will additionally participate in follow up of screened patients as part of quality improvement, with an eye toward identifying resource gaps, barriers to accessing referrals, or other challenges which may be underrecognized in the needs of our patients after discharge from the ED.

Fellowship Activities

1. Complete hands-on SBIRT (Screening, Brief Intervention, Referral, and Treatment) and hospital policy training, including training modules to access EPIC
2. Connect with present HPAs to understand past challenges and continue their work
3. Meet with Dr. Thompson and the PEERS leadership team twice monthly to review administrative issues, discuss cases, and participate in didactics/information sessions from educators and community leaders.
4. Dedicate 10 hours per week to PEERS, including about 8 hours weekly in the PED and 2 hours weekly in mentorship/training with fellow HPAs in the School of Medicine
5. Review and stay up to date on BMC- and community-based resources available
6. (Optional) Participation in submission of abstracts and/or manuscripts regarding the project and data gleaned from the screening and referral process.

[Back to the top](#)

Supporting Communications and Advocacy for Equity & Cash Transfer Policies



Professor: Stephanie Ettinger de Cuba, PhD, MPH

Key Staff: Charlotte Bruce, MPH (BMC Pediatrics)

Department: Health Law, Policy & Management/Community Health Sciences (SPH) & Pediatrics (BMC)

Email: sedc@bu.edu & charlotte.bruce@bmc.org

Number of fellows: one

Timeframe: Dec 2023-Dec 2024

Children's HealthWatch (www.childrenshealthwatch.org) is a nonpartisan network of pediatricians, public health researchers, and children's health and policy experts. Our mission is to achieve health equity for young children and their families by advancing research to transform policy. We do that by collecting real-time data in urban hospitals in 4 U.S. cities (Boston, MA; Little Rock, AR; Minneapolis, MN; and Philadelphia, PA) on infants and toddlers from families facing economic hardship. We then analyze and share our findings with academics, legislators, and the public. These findings help policymakers and the public better understand the social and economic factors that impact children's health so they can make well-informed policy decisions that can give all children equitable opportunities for healthy, successful lives.

Our work sits at the intersection of research and policy and, as such, we are constantly working to communicate our research findings to best advocate for evidence-based policy choices. In fall 2023 a team of students will consult with us on a communications project to reinvigorate our equity-focused series, which has included webinars and podcasts to date. In 2024 we will seek to implement recommendations that come out of this process, with assistance from the selected fellow.

In addition, we are seeking project support for work in partnership with the Bona Lab at Dana Farber Cancer Institute and the Kairos Center for Religions, Rights, and Justice. In brief, the Bona Lab is testing via Randomized Control Trial (RCT) a new cash transfer benefit for low-income families of children undergoing chemotherapy to help mitigate poor cancer outcomes (relapse/mortality) and the risk of financial toxicity – i.e. having a dramatic decline in income and experiencing significant material hardship due to the time and financial demands of chemotherapy. However, since public benefit programs have income eligibility limits, such cash transfers can trigger cliff effects (when an increase in income causes a reduction or loss of other benefits, ultimately leaving families with fewer financial resources). This raises concern over the ultimate effectiveness of cash transfers on desired outcomes. To address this, pilots testing such cash transfers have gotten state waivers to ensure that the benefit does not count towards income. While this has been successful on a small scale, in approximately 1.5-2 years the Dana Lab study will roll out across all 50 states, making this state-by-state approach an infeasible solution. Over the next year, Children's HealthWatch and The Kairos Center are helping The Bona Lab to

identify strategies to scale the RCT across states and ensure that the cash transfer will not financially harm participating families.

Between these two projects, the Fellow will:

- Assist with Children’s HealthWatch communications, including our equity-focused series;
- Track, review, and summarize research related to benefit cliff effects and financial stability in basic income and cash transfer programs (e.g. pilot studies, state tax credits)
- Contribute to equity-centered internal and external project materials, with an opportunity to co-author a policy report and/or peer-reviewed manuscript
- Assist with scheduling focus groups and interviews, note taking, and project coordination

[Back to the top](#)

Home Visiting Collaborative Improvement and Innovation Network (HV CoIIN)

Education Development Center (EDC)

Supervisor & Mentor: Zhandra Levesque, Senior Project Director
zlevesque@edc.org

Location: Education Development Center- Position is 100% remote

Please Note: Fellows will be part of a fully virtual team.

Overview of Education Development Center

[Education Development Center \(EDC\)](#) is a global nonprofit that advances lasting solutions to improve education, promote health, and expand economic opportunities. Since 1958, we have been a leader in designing, implementing, and evaluating powerful and innovative programs in more than 80 countries around the world. EDC promotes equity and access to high-quality education and health services and products that contribute to thriving communities where people from diverse backgrounds learn, live, and work together. We support an inclusive workplace culture that embraces many perspectives and broadens our understanding of the communities we serve, enhancing and enriching our work.

Overview of the [Home Visiting Collaborative Improvement and Innovation Network \(HV CoIIN\)](#)

Background

The Challenge: Home visiting programs have a unique opportunity to reach families and improve maternal, child, and family outcomes. Yet, gaps exist between our knowledge of what works and the implementation of these practices on the ground. As a result, many programs nationwide are struggling to meet families' complex needs.

Overview of HV CoIIN 3.0

Funding period: September 2022-August 2027

The mission of the HV CoIIN is to achieve breakthrough improvement in select process and outcome measures, including the benchmark areas legislatively mandated for the Maternal Infant and Early Childhood Home Visiting (MIECHV) program, while reducing or maintaining the program costs. Additionally, the mission includes developing means to spread the initial learning and improvement more widely within participating organizations and to other MIECHV grantees and local implementing agencies.

This project is a high priority for the Maternal and Child Health Bureau and the Bureau's Division of Home Visiting and Early Childhood Systems. The HV CoIIN is seen as a strategy to strengthen the case for continuing public support of the MIECHV program. The federal funder requires the use of a quality improvement structure called the Breakthrough Series Model (BTS), developed by the Institute for Healthcare Improvement.



As part of the Breakthrough Series (BTS) model that frames the HV CoIIN, home visiting leaders work to identify a particular issue that is ripe for improvement, characterized by existing knowledge that is evidence-informed but not widely put into practice, examples of better results demonstrated in real-life situations and potential of such results, if expanded, to have a profound effect for the primary population served.

Two tracks characterize this phase of the HV CoIIN:

- Scale: scaling up of effective interventions tested in the previous HV CoIIN, including those that alleviate caregiver depression, promote breastfeeding, support developmental promotion, enable access to well-child visits, and address intimate partner violence
 - New Topic CoIINs: refine and evaluate new sets of evidence-informed change strategies for high-priority topics. The topics of focus for the project period:
 - Caregiver-parent interaction
 - Post-partum care

Scope of Work

The MCH Fellow will be a member of the national HV CoIIN team at EDC. This position would get to learn and engage in deep content and associated data on the topics of Scale: Health Equity and Staff Recruitment and Retention in Home Visiting as well as those associated with the New Topic workstream listed above. The fellow will have an opportunity to also learn CQI methods, implementation of those methods within a maternal and child health public health program and have the opportunity to shadow real-time project operations. Specific activities may include:

- A. [Support Quantitative and Qualitative data in support of CQI efforts \(40%\)](#)
 - Support the development of excel dashboard to summarize data from participating home visiting teams in the improvement efforts.
 - Support project evaluation process and outcomes data to ensure the project team can make changes to operations and better understand effective practices.
 - Support CQI process data for internal HV CoIIN team in partnership with [EDC's Head Start Center on Health, Behavioral Health and Safety](#) to identify opportunities for improvement in TA processes.
- B. [Communication, Marketing and Dissemination \(25%\)](#)
 - Contribute to the development and implementation of a comprehensive project-wide communications plan, inclusive of data, that supports recruitment efforts and dissemination of project outcomes.
 - Identify topics of interest for blogs and articles and draft for publication
 - Support the conceptualization, development and dissemination of podcasts or other audio products.
 - Support the content development and design of monthly project newsletters reaching MIECHV awardees across the country.

C. Build team and project management skills (25%)

- Attend and contribute to team meetings, including Peer to Peer calls (monthly), 1:1 coaching calls with states, and internal team meetings as assigned (bi-weekly)
- Serve in the role of project coordinator with the objective to promote the development of project management skills. This includes capturing minutes, curating next steps, drafting communications, and synthesizing content information.

D. Contribute to tools and resources (10%)

- Update existing tools with an annotated bibliography to support evidence-based recommendations and references
- Identify opportunities for conference and journal submissions, draft abstracts and paper outlines in collaboration with key internal stakeholders

Supervision and Mentoring

In addition to weekly supervision, the MCH Fellow will have the opportunity to meet with project leadership in a mentoring capacity once a month and as needed for professional development support.

Learn more about the project at <https://hv-coiin.edc.org/>

This project is supported by the Health Resources and Services Administration (HRSA) of the U.S. Department of Health and Human Services (HHS) under grant number UF4MC26525, Home Visiting Collaborative Improvement and Innovation Network (HV CoIIN). This information or content and conclusions are those of the author and should not be construed as the official position or policy of, nor should any endorsements be inferred by HRSA, HHS, or the U.S. Government.

[Back to the top](#)

Mental Health Advocacy Project for Kids

Health Law Advocates



Supervisor & Mentor: Marisol Garcia, JD
Project Director

Patricia Elliott, DrPH
Clinical Associate Professor, CHS Dept.

Location: Remote/One Federal Street, 5th Floor, Boston, MA 02110

Background: Health Law Advocates' innovative Mental Health Advocacy Program for Kids (MHAP for Kids) eliminates barriers to mental health care for at-risk youth with mental illness. The program embeds lawyers in state-funded Family Resource Centers in all counties across Massachusetts. These attorneys advocate on behalf of children with schools, state agencies, the court system, and health insurers to improve access to mental health care. A multi-year independent study by BUSPH found that the program significantly improves the mental health of participating children and their parents, significantly improves family functioning and significantly improves school attendance. Additionally, the study concluded that MHAP for Kids significantly reduces the need for children's emergency room visits, inpatient admissions and incarceration, thereby saving the state significant sums. HLA's goals are to expand MHAP for Kids statewide and to secure state dollars as the primary sustainable funding source.

As HLA aggressively works toward expanding MHAP for Kids across Massachusetts and nationally, HLA seeks assistance with collecting information to support, inform, and guide our efforts.

Fellowship Description

The MCH Practice Fellow will:

- contact families and schedule interviews
- conduct interviews with parents and stakeholders in-person, by zoom, or by phone
- help prepare collect and analyze data
- maintain accurate records of interviews, safeguarding the confidentiality of subjects
- participate in administrative duties related to study management, analysis, and dissemination of findings
- work within the team of staff attorneys and paralegals to support the program
- job-shadow or attend meetings/sessions to learn about the broader work of Health Law Advocates, the public interest law firm where this program sits

Ideal candidates will have a flexible schedule.

[Back to the top](#)

BUSPH Center of Excellence in Maternal and Child Health C² Podcast Fellowship



The C² Podcast Fellowship offers an opportunity for a fellow to launch their podcasting journey in public health and at the intersection of maternal and child health. The C² Podcast Fellowship will support the Center's first podcast [C²: Critical Conversations that Lie at the Heart of Health Justice](#). The fellow will be essential in supporting the goal of C² - highlight conversations that inform and educate our audience of MCH students/professionals, public health students/professionals about health issues and highlight how these issues are impacting BIPOC/historically under-resourced communities. The BUSPH curriculum in combination with the Center's extra-curricular opportunities will give you the knowledge, skills, and hands-on experience you need for your chosen area of practice.

Duration: December 2023 – December 2024

Time Commitment: Roughly 8-10 hours a week, however, the nature of the work allows for remote work, nights, evenings, and small segments of time throughout the week.

Supervisor: Anisa Saleh (MCH CoE Deputy Director) will check in with fellow bi-weekly, including monthly strategy meetings. Dr. Lois McCloskey (MCH CoE PI/Director) and Eilisha Manandhar (Podcast Production Advisor) will provide additional supervision as appropriate.

Duties:

- In partnership with the Deputy Director and the Podcast Production Advisor, build a plan for the continuation of Center's podcast, [C²: Critical Conversations that Lie at the Heart of Health Justice](#)
- Create monthly episodes featuring guests that highlight important health justice topics and how it relates to historically under-served communities
- Coordinate scheduling potential guests to feature on the podcast
- Create interview guides
- Conduct and edit podcast interviews
- Publish episodes on specified platforms (Spotify, SoundCloud, Anchor)
- Design cover art for episodes
- Build a promotion and outreach strategy for the podcast episodes

Application Supplements: Please provide 1-3 samples of social media blogs or health communication assignments to mchcoe@bu.edu. Interviews will be conducted.

About MCH CoE: We are one of 13 Centers of Excellence in Maternal and Child Health (MCH CoEs) in the United States, funded by the [Maternal and Child Health Bureau \(MCHB\)](#) of the Health Resources Service Administration (HRSA 2 T76 MC00017). As a Center, we offer specialized educational, leadership, research, and practice programs to give students pursuing an MCH education a leg up in their ultimate aim: to prepare for a dynamic career in MCH, be it designing and managing community programs, advocating for national policies, developing communication strategies, or participating in research with an international NGO.

[Back to the top](#)

BUSPH Center of Excellence in Maternal and Child Health MCH National Network Fellowship



This **MCH National Network (MCH NN) Fellowship** offers a student the opportunity to lead a newly formed [MCH nationwide network](#) of students and emerging professionals, all committed to MCH (broadly defined) practice, policy making and advocacy, and research. Initiated by and for students and alumni of MCH Centers of Excellence and Catalyst Programs, the MCH NN aims to bring people all over the nation together to share information, collaborate on advocacy and research initiatives, and to support one another in the pursuit of meaningful, productive MCH-related careers.

Duration: December 2023 – December 2024

Time Commitment: Roughly 8-10 hours a week on average, however, the nature of the work allows for remote work, nights, evenings, and small segments of time throughout the week.

Supervisor: Anisa Saleh (MCH CoE Deputy Director) will check-in with fellow bi-weekly. Dr. Lois McCloskey (MCH CoE PI/Director) will provide additional supervision as appropriate.

Duties:

- Act as the network Director to lead the continued development and sustenance of the national MCH NN Board, consisting of 10 other students/alumni representing a wide range of MCH CoE's/Catalyst Centers and other Schools and Programs of PH with MCH programs
- Lead monthly board meetings, plan monthly virtual events in collaboration with fellow board members and in-person events when appropriate, and collaborate with students from other schools to share resources and learning opportunities
- Maintain network engagement through social media platforms to connect students and alums, as well as to share resources/opportunities (collaborating with MCH NN's Communications Committee)
- Create and implement a strategy to engage alumni in the MCH NN
- Outreach to MCH student interest groups and leaders at SPH CoE and Catalyst programs
- Manage network subscriber list, newsletter distribution, and promotion of network efforts
- Host gatherings at national/regional meetings or conferences, as applicable

The fellow will develop skills in management, coordination, communication and have the opportunity to meet and work with MCH students, faculty and community organization members across the country.

About [BUSPH MCHCOE](#): We are one of 13 Centers of Excellence in Maternal and Child in the United States, funded by the [Maternal and Child Health Bureau \(MCHB\)](#) of the Health Resources Service Administration (HRSA 2 T76 MC00017-27). As a Center, we offer specialized educational, leadership, research, and practice programs to give students pursuing an MCH education a leg up.

[Back to the top](#)



MCH Policy and Planning

Massachusetts Department of Public Health

Supervisor & Mentor: Maia Raynor, Maternal and Child Health Program and Policy Manager

Location: 250 Washington St., Boston MA 02108 / Remote

Background: The Bureau of Family Health and Nutrition provides programs and services ensuring the health of the Commonwealth's parents, infants, children and youth — including children and youth with special health needs and their families. Comprised of six divisions and over 200 staff, the Bureau administers the Women Infants and Children (WIC) Nutrition program, the Early Intervention (EI) program that serves infants and toddlers (birth to 3 years old) who have developmental delays or are at risk of a developmental delay, a system of specialized services and supports for children and youth up to age 22 years old with special health needs, and initiatives to promote health in pregnancy and early childhood, such as home visiting and early childhood mental health. The Bureau also conducts surveillance and research to inform programming and policies affecting maternal and child health in the Commonwealth.

Fellowship Description: The Bureau of Family Health and Nutrition seeks a Fellow to assist the bureau with its policy research, development of policy briefs, and tracking of legislation to support the health of pregnant people, parents, infants, children, and youth. Additionally, the fellow would support project management aspects of the Title V Needs Assessment. Working closely with the Program and Policy Manager, Deputy Director of Strategy and Implementation, and the Health Communications Manager:

- MCH Partner mapping:
 - Identify existing strategic relationships and collaborations across the Bureau and identify gaps and opportunities to strengthen and ensuring diverse partnerships.
- MCH Policy Briefs
 - Drafting policy briefs on key bureau priorities, including landscape scans of innovations in other states and communities.
 - Research tools and frameworks to embed racial equity in MCH policy.
 - Support development of policy / topical briefs in advance of administration transition.
- MCH Legislation
 - Support work to track key MCH legislation.
 - Draft briefs on key legislation at the state and federal level.
 - Support briefings with key stakeholders (internal and external to BFHN).
- Legislative Reports
 - Develop a tracking system for legislative reports, including setting up a process and communication system with staff leading specific reports.

- Track, review, copyedit legislative reports.
- Title V Needs Assessment
 - Support development of stakeholder engagement and communications
 - Support project meetings with notetaking and project memos

There may be opportunities to participate in department wide activities and the daily life experiences of state public health employees including all staff meetings, recognition and awards program, career panel and more.

Key skill or topic areas:

- MCH policy research and writing skills
- Project Management

Additional Qualifications:

- Flexible, enthusiastic, self-motivated
- Knowledge of academic and policy research, good writing skills, good communication skills, attention to detail
- Excellent people skills, conducting interviews and facilitating meetings.
- Committed to MDPH's mission of promoting and improving health for all, with a focus on eliminating racial disparities

The Bureau of Family Health and Nutrition (BFHN) provides programs and services ensuring the health of the Commonwealth's mothers, infants, children and youth — including children and youth with special health needs and their families.

The Bureau is the home to the Title V Maternal and Child Health (MCH) Block Grant, a federal-state partnership that provides critical infrastructure funding to the Commonwealth's maternal and child health system, providing direct or enabling services to over 860,000 women, infants and children in Massachusetts. The Title V MCH Block Grant is used to address the most critical, pressing, and unique needs of maternal and child health populations across the Commonwealth. The MA Title V MCH program includes efforts to reduce maternal mortality and morbidity, infant mortality, and preventable diseases among children; advancing health equity and eliminating racial, ethnic, and geographic inequities in maternal and child health outcomes; assuring access to quality maternal and child health services, especially for families with incomes below the federal poverty level or who live in areas with limited availability of health services; and promoting family-centered, community-based, coordinated care for children with special health care needs. Title V MCH Block Grant programs help train the next generation of maternal and child health workforce leaders and enable various stakeholders to address emerging public health concerns that impact maternal and child health. These programs can ultimately save federal and state governments money by ensuring that people receive preventive services to avoid costlier chronic conditions later in life.

BFHN is comprised of six divisions, over 200 staff and about 165 contracted vendors providing services in the community. The Bureau administers the Women Infants and Children (WIC) Nutrition program, the Early Intervention (EI) program that serves infants and toddlers (birth to 3 years old) who have developmental delays or are at risk of a developmental delay, a system of specialized services and supports for children and youth up to age 22 years old with special health needs, and initiatives to promote health in pregnancy and early childhood, such as home visiting and early childhood mental health. The Bureau also conducts surveillance and research to inform programming and policies affecting maternal and child health in the Commonwealth.

[Back to the top](#)



Improving data linkages to the Pregnancy to Early Life Longitudinal Data System (PELL) using Machine Learning *Massachusetts Department of Public Health*

Supervisor & Mentor: Sarah L. Stone, Bureau of Family Health and Nutrition
Sarah.L.Stone@mass.gov
Hafsatou Diop, Bureau of Family Health and Nutrition
Hafsatou.Diop@mass.gov

Location: 250 Washington St., Boston MA 02108

Background: The Division of Maternal and Child Health Research and Analysis (DMCHRA) at the Massachusetts Department of Public Health (MDPH), Bureau of Family Health and Nutrition (BFHN), works to optimize the health of infants, children, mothers, and families in all Massachusetts communities by strengthening partnerships and translating data to action. DMCHRA provides statistical information for needs assessment, performance management, and decision support throughout BFHN using data analytics, survey work, and evaluation studies.

A key data system used in DMCHRA is the Pregnancy to Early Life Longitudinal Data System (PELL): A collaboration of DPH, Boston University School of Public Health, and the Centers for Disease Control and Prevention. PELL is a longitudinally linked and relational data system with information on mothers and their children from delivery and birth through early childhood. The PELL data system uses deterministic and probabilistic methodologies to link annual vital statistics records (birth and death certificates), hospital utilization, and public health programs' participation data by using LinkPro software (InfoSoft, Inc, Winnipeg, Manitoba, Canada). More than 99% of all deliveries in Massachusetts from 1998 to 2020 have been linked in PELL. The PELL linkage allows children born to the same mother to be identified as siblings and multiple hospitalization records belonging to the same women or children to be attributed as such. PELL has linked records for over one million births.

Program and state agency data from Early Intervention, Birth Defects, WIC, Newborn Hearing Screening, Substance Abuse Services, and Assisted Reproductive Technology are among the selected data that are linked or in the process of being linked to the core PELL data. The Division is interested in improving the linkage processes used in creating and maintaining PELL to increase efficiency while maintaining high accuracy.

Fellowship Description:

The DMCHRA seeks a Fellow to explore options to improve the efficiency of our PELL linkages using machine learning techniques and other computer science and statistical practices. The Fellow would assist in exploring options and evaluating the benefits and limitations. The Fellow would oversee the process of implementing the selected process and evaluate the outcome.

Specific activities may include, but are not limited to:

- Meeting with key data linkage staff from MA and other states' agencies which also use machine learning for linkages
- Meeting with internal PELL staff to understand needs of the project
- Mapping out the options available, including costs, benefits and limitations
- Creating workflows for implementing the chosen option
- Working with technical data staff to implement the chosen option
- Using a quality improvement approach to validate results through testing and compare to current methods
- Documenting the processes for reproducibility and create a standard operating procedure for the project

There may be opportunities to participate in department wide activities and the daily life experiences of state public health employees including all staff meetings, recognition and awards program, career panel and more.

Key skill or topic areas: Data Management skills, Maternal and Child Health knowledge

Additional Qualifications:

- Strong interest in using and managing data to improve health outcomes for all
- Strong computer science knowledge to be able to work with IT staff in implementing the chosen system and be able to oversee validation process
- Proficiency in SAS required
- Ability to clearly communicate technical information to staff
- Ability to work independently

Supervision:

The MCH Fellow will be supervised by DMCHRA senior epidemiologists and PELL staff, director and associate director.

[Back to the top](#)

Early Intervention Landscape Analyses

Massachusetts Department of Public Health



Supervisor & Mentor: Emily White, Director, Early Intervention Division

Location: Mondays at 250 Washington Street Boston, MA 02108 (preferred); virtual (considered)

Background:

The Early Intervention Division (EI) at the Massachusetts Department of Public Health (MDPH), Bureau of Family Health and Nutrition, oversees the Commonwealth's Individuals with Disabilities Education Act, Part C program (IDEA Part C) to provide services to infants and toddlers ages birth to three through a network of contracted service provider agencies. Early intervention services are designed for Massachusetts families with children under the age of three who are not reaching age-appropriate milestones, diagnosed with certain conditions, or have medical or social histories which may put them at risk for a developmental delay. These services are meant to help support families and caregivers and to enhance the development and learning of infants and toddlers.

The EI Division is comprised of five units that coordinate the administration and oversight of the statewide system as the Commonwealth's Lead Agency for Part C services, including General Supervision and monitoring, fiscal oversight, data collection and analysis, targeted technical assistance and training, child find and public awareness systems, and family and community engagement.

Fellowship Description:

The Early Intervention Division seeks a Fellow to conduct landscape analyses of policies under consideration. Key topics include provider qualifications and retention, funding for supervision activities, and data collection requirements and training. This Fellow is expected to conduct 5-6 landscape analyses by reviewing available research, policy in other Part C states, and developing a presentation to describe the possible benefits, risks, stakeholder groups, recommendations, and implementation steps. The MCH Fellow will be supervised by the EI Division's Director with additional support from the Division's Strategic Leadership Team (Clinical Quality Manager, Finance Manager, Research & Analysis Manager, Family & Community Engagement Manager, and Operations Manager).

Specific activities may include, but are not limited to:

- Conducting six Landscape Analyses to review available research, policy in other states, possible benefits and risks
- Develop recommendations for implementation for each topic

There may be opportunities to participate in department wide activities and the daily life experiences of state public health employees including all staff meetings, recognition and awards program, career panel and more.

Key skill or topic areas:

- IDEA Part C Policy
- Braiding state, Federal, and commercial insurance funding

Additional Qualifications:

- Independent
- Self-motivated
- Committed to centering effective early intervention services for infants, toddlers, and their families

Supervision:

The MCH Fellow will be supervised by:

Emily White, Director, Early Intervention Division, Emily.A.White@mass.gov

[Back to the top](#)



Landscape Analysis of Social Determinants of Health (SDoH) Efforts to Support Implementation of *Maternal Child Health (MCH) Title V Block Grant* Priorities

Massachusetts Department of Public Health

Supervisor & Mentor: Claudia Catalano, Bureau of Family Health and Nutrition
Lisa Sheehy, Bureau of Family Health and Nutrition

Location: 250 Washington St. Boston, MA 021008

Mission: The mission of the Massachusetts Department of Public Health is to prevent illness, injury, and premature death, to assure access to high quality public health and health care services, and to promote wellness and health equity for all people in the Commonwealth.

Background: The Maternal and Child Health Block Grant, also known as Title V, is dedicated to improving family health and well-being across generations. Title V enables the Department of Public Health (DPH) to develop, implement, and evaluate policies and programs for pregnant people, parents, caregivers, infants, children, and youth, including those with special health needs. Title V serves as a funder, convener, and collaborator to promote family-driven, equitable, evidence-based, and data-informed services and programs. Furthermore, Title V's vision and strategy is grounded in DPH's commitment to eliminating institutional and structural racism. The current 2020-2025 [Title V State Action Plan](#) consists of a number of key priorities; one being Social Determinants of Health (SDoH). The SDoH Priority's goal is to eliminate health inequities caused by unjust social, economic, and environmental systems, policies and practices. The SDoH Priority's objective is to decrease, by 2025, the percent of families who have had difficulty since their child was born covering basics, like food or housing, on their income.

Fellowship Description: The Title V SDoH Implementation Team, has been exploring ways to better partner and coordinate SDoH efforts across MDPH bureaus, sister state agencies, and external stakeholders as partnership and collective impact are fundamental to addressing the SDoH that led to health inequities. To better coordinate efforts a landscape analysis of Department-wide SDoH activities is needed to (1) identify a common definition and understanding of SDoH, and sister terms such as Health Related Social Needs; 2) develop a baseline understanding of DPH SDoH activities across the continuum of SDoH-related efforts from upstream (structural) to downstream (individual); and 3) help to understand strengths, gaps, areas for natural collaboration and alignment, as well as networking and sharing information of existing efforts /programs /resources across the Department to better connect families and individuals to services. The Title V SDoH Team is seeking a Fellow to work with the Team to design, development, and conduct a SDoH landscape analysis survey, analyze results, and provide findings and recommendations.

Specific activities may include, but are not limited to:

- Meet with the SDoH Team and other DPH staff who are working on SDoH and/or Health Related Social Needs activities or infrastructure building to gather baseline information on definitions, SDoH continuum of efforts, and other foundational information.
- Conduct literature review to gather national understanding of SDoH work and where the field is moving across health/ public health.
- Partner with SDoH Team and other relevant partners to draft, develop, and finalize the landscape analysis survey or other selected data collection instruments.
- Conduct the landscape analysis
- Analyze results and present findings and recommendations

There may be opportunities to participate in department wide activities and the daily life experiences of state public health employees including all staff meetings, recognition and awards program, career panel and more.

Key skill or topic areas:

- Interest or experience in process assessment and evaluation including survey development and analysis.
- Understanding of how structural and institutional racism affect communities of color and overall health

Additional Qualifications:

- Flexible, enthusiastic, self-motivated
- Committed to supporting MDPH’s mission of promoting and improving health for all and Title V’s mission to improving family health and well-being across generations
- Experience or interest in program and/or process evaluation including survey development and data analysis

Supervision:

The MCH Fellow will be supervised by:

- **Claudia Catalano**, Family and Community Health Policy and Systems Director, Bureau of Family Health and Nutrition, Division of Pregnancy, Infancy, and Early Childhood. Claudia.Catalano@mass.gov
- **Lisa Sheehy**, Public Benefits & Health Policy Specialist, Bureau of Family Health & Nutrition, Division for Children & Youth with Special Health Needs. Lisa.Sheehy@mass.gov

[Back to the top](#)



Launching a Holistic Health Transition Toolkit for Youth & Young Adults with Special Health Needs and Disabilities and Their Families

Massachusetts Department of Public Health

Supervisor & Mentor: Amy Benison, Bureau of Family Health and Nutrition

Location: 250 Washington St., Boston MA 02108 / Remote

Background: The Division for Children & Youth with Special Health Needs (DCYSHN) within the Massachusetts Department of Public Health's Bureau of Family Health and Nutrition works with families, providers, and others to support children and youth with special health needs ages birth to 22 and their families. This includes children and youth with chronic medical, physical, developmental, behavioral or emotional conditions. The Division provides several related services supported by the Massachusetts Title V Block Grant from the U.S. Health Resources & Services Administration's Maternal & Child Health Bureau (HRSA-MCHB).

One key Title V priority is to increase the percent of youth and young adults with special health needs (YYASHN) who have received services necessary to transition to adult health care (National Performance Measure 12 - NPM 12). In Massachusetts, only 24.2% of YSHN aged 12–17 years have reported receiving the services necessary to make transitions to appropriate adult health care, work and independence (NSCH 2020-21). While this has significantly improved in the past few years (15.4% in 2016) and is higher than the nationwide percentage of 20.5%, the data confirm the clear need for continued improvement. Stakeholders have described several limitations of the state health care system to facilitate a smooth transition for youth and young adults with special health needs (YYASHN) (ages 12-22), including a general delay in starting this process in the young person's life. Specifically, YYASHN and their families need better local resources and guidance to understand and navigate the health care transition process as well as promotion of self-management and independence.

To provide needed health transition resources, practice fellows will build upon past MA Title V health transition materials to increase access to health transition resources and information for YYASHN, their families, and providers by developing a Health Transition Tool Kit for YYASHN and their families. They will draw upon previous findings from literature reviews, key informant interviews, focus groups and advisory meetings conducted separately with caregivers and YYASHN, and subject matter expert interviews in FY21- FY23. They will then begin the sequential review of each of the toolkit sections below developed by interns in past years. They will seek final stakeholder feedback on each drafted section, including from youth advisors, edit based on feedback with an eye for racial equity, cultural and linguistic appropriateness, health literacy, and accessibility, and execute the soft launch for testing and evaluation of the Health Transition Toolkit.

- The **main toolkit** includes the following topics: Health Care, Self-Management & Personal Health, Public Benefits, Caregiver & Family Wellbeing, Guardianship, Advocacy, and Community Support.

- **Additional toolkit sections** address Sexual & Reproductive Health, Mental Health, Oral Health & Healthy Lifestyles (Nutrition, Physical Activity and Substance Use Prevention).

Fellowship Description

MA DCYSHN seeks a Fellow to prepare the toolkit for a public launch of the initial core elements. The project will include reviewing, editing, testing, launching, promoting and evaluating the new Health Transition Toolkit for the DPH Division for Children & Youth with Special Health Needs (DCYSHN) to address the holistic health and health care needs of youth and young adults with special health needs and disabilities (YYASHN) as they transition from pediatric to adult health care. They will develop skills in project planning, management and evaluation, meeting and interview facilitation skills, communication, social media, web design, writing and presentation; and disability/medical-related topics.

Specific activities may include, but are not limited to:

- Reviewing previous research and analyses for this project
- Developing a project work plan
- Working with and facilitating meetings of the Health Transition Implementation Team for their participation and feedback
- Interviewing YYASHN advisors and caregivers for their feedback
- Conducting the project evaluation
- Presenting the Health Transition Toolkit along with their evaluation findings and recommendations to a variety of audiences
- Post the Toolkit on mass.gov for testing purposes.
- Promoting the Toolkit through social media and other communication channels

There may be opportunities to participate in other Division health transition efforts from the Title V state action plan, working with other bureaus and state agencies, working with the Massachusetts Chapter of the American Academy of Pediatrics (MCAAP), and participate in the daily life experiences of state public health employees including all staff meetings, recognition and awards program, career panel and more.

Additional Qualifications

- Flexible, enthusiastic, self-motivated
- Knowledge of academic research, good writing skills, good communication skills, attention to detail
- Excellent people skills, experience working with youth and young adults, preferably with special health needs or disabilities.
- Committed to supporting MDPH's mission of promoting and improving health for all, with a focus on children and youth with special health needs

Supervision and Mentoring: The MCH Fellow will be supervised by the DCYSHN Program Support Specialist and receive support from the DCYSHN Direction and Health Transition Priority Implementation Team.

[Back to the top](#)

Standardizing Data Collection for the Division for Children and Youth with Special Health Needs to Improve Program and Family Outcomes



Massachusetts Department of Public Health

Supervisors & Mentors: Megan Young, Bureau of Family Health and Nutrition
megan.e.young@mass.gov
Elizabeth Bostic, Bureau of Family Health and Nutrition
elizabeth.e.bostic@mass.gov

Location: 250 Washington St., Boston MA 02108

Background: The Division for Children & Youth with Special Health Needs (DCYSHN) within the Bureau of Family Health and Nutrition (BFHN) at the Massachusetts Department of Public Health (MDPH), works with families, providers, and others to support children and youth with special health needs ages birth to 22 and their families. This includes children and youth with chronic medical, physical, developmental, behavioral, or emotional conditions.

The Division is comprised of 9 programs, each with its own unique data collection system ranging from Excel to Access to more sophisticated SQL databases to track client information and program data. The Division (and Bureau) is developing a client management system, with robust reporting capabilities, that will streamline the intake process for families and standardize and align data collection across all programs in order to comprehensively assess reach, impact, and gaps in service provision. This in turn will lead to broader outreach across the Commonwealth and improved outcomes for children and their families.

Fellowship Description

The DCYSHN seeks a Fellow to assist in conducting JAD (Joint Application Development) sessions with each program in preparation of the development of a division-wide client management system. Programs include the Community Support Line, Care Coordination, MASSTART, Medical Review Team, Universal Newborn Hearing Screening, and Family TIES. Two additional Bureau programs will also be part of this initiative, including the Birth Defects Monitoring System and Early Intervention Parent Leadership Program. Three programs to date, (Welcome Family, Pediatric Palliative Care Network and Catastrophic Illness in Children Relief Fund) have launched their new databases under this initiative.

Specific activities may include, but are not limited to:

- Meeting with each program to conduct a JAD session which will include:
 - Mapping out current program data and reporting needs
 - Creating workflows for the client management system

- Utilizing a quality improvement approach when updating data collection tools to ensure variables align with DPH data standards, meet client and program needs, can assess trends over time, and measure outcomes
- Determining feasibility of moving historical data into new system
- Engaging families to assess if updates to data collection tools appropriately balance program and family needs without placing an undue burden on families
- Supporting development and testing of client management system both in Oracle APEX and REDCap

There may be opportunities to participate in department wide activities and the daily life experiences of state public health employees including all staff meetings, recognition and awards program, career panel and more.

Additional Qualifications

- Flexible, enthusiastic, self-motivated
- Committed to supporting MDPH’s mission of promoting and improving health for all, with a focus on children and youth with special health needs
- Experience or interest in program evaluation and/or database development preferred, especially with RedCap

Supervision and Mentoring: The MCH Fellow will be supervised by the DCYSHN’s senior epidemiologist and assistant director.

[Back to the top](#)

Diversity Scholars Leadership Program

The **Diversity Scholars Leadership Program (DSLSP)** supports emerging health professionals who seek to be leaders in the movement to eliminate health and other inequities and the achievement of social justice. The DSLSP has two arms, (1) DSLP-URM for students from under-represented minority communities and (2) as of 2021, DSLP-LGBTQIA+ for students from LGBTQIA+ communities.

The DSLP aims to create an environment in which underrepresented minority and LGBTQIA+ students can flourish, combine their life experience with public health knowledge, and be connected to the wisdom, experience, and guidance of a strong network of alumnae of color, LGBTQIA+, and allies who precede them as MCH leaders.

The **DSLSP-URM and DSLP-LGBTQIA+** programs offer the following support:

Tuition Support*: Our 2023 Diversity Leadership Scholars will be awarded a scholarship for up to 6 tuition credits over a 2-year period*.

Mentoring: Each scholar will be matched with one BUSPH mentor and one field mentor. The field mentor will be a person of color and/or person from the LGBTQIA+ community who holds an MCH-related leadership position. Mentors help scholars navigate the complex learning and professional development process inherent in combining academic training, lived experience as a member of a minority and LGBTQIA+ community, and a passion for racial, health and social justice.

Community Building at BUSPH: The DSLP supports students to build relationships with mentors and other students of color and LGBTQIA+ students at BUSPH. This can occur organically as well as through planned social gatherings, racial and health justice talking circles, and group mentoring dinner sessions.

Program applications: Posted annually in October.

**The DSLSP is supported by the federal HRSA/MCHB grant #T76 MC00027, and as such is available only to U.S. citizens and permanent residents. Additional support provided by the Maternal and Child Health Fund.*

DSLSP-URM

Eligibility

- MPH student in the **Maternal & Child Health Certificate**.
- A member of an under-represented minority group: Black or African American, Hispanic (all races), American Indian or Alaska Native, Native Hawaiian or Other Pacific Islander, Hispanic or Latinx, Asian, two or more races (Source: HRSA MCHB).
- First-generation students encouraged to apply.

BUSPH mentor: Anisa Saleh, MPH
Deputy Director, MCH CoE
Community Health Sciences

DSLSP-LGBTQIA+

Eligibility

- MPH student in the **Sex, Sexuality and Gender or Maternal & Child Health Certificate**.
- LGBTQIA+ identifying students from **all** racial and ethnic identities are eligible to apply.
- Students who meet eligibility criteria for both DSLP-URM and DSLP-LGBTQIA, can state their interest in applying for both on the application.
- First-generation students encouraged to apply.

BUSPH mentor: Julia Lanham, MPH
Assistant Dean, Careers and Practicum Advisor, SPH
Queer Alliance

Director: Anisa Saleh, MPH (mchcoe@bu.edu)

Center Director: Lois McCloskey, DrPH (loism@bu.edu)

For more program information and updates

email: mchcoe@bu.edu | **visit:** www.bu.edu/mchcenterofexcellence/dslp



Funding for the MCH Fellowship program at Boston University School of Public Health is provided by a Center of Excellence in Maternal and Child Public Health grant (2T76MC00027) from the Maternal and Child Health Bureau of HRSA.