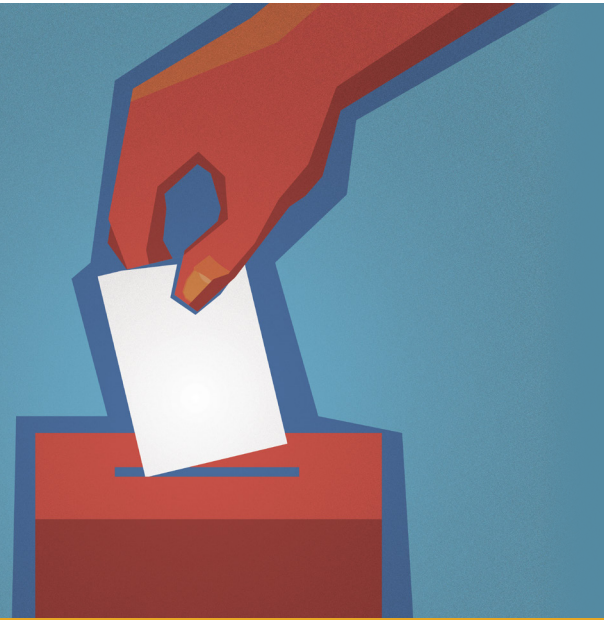


CORONAVIRUS SEMINAR SERIES

POLITICS, HEALTH, AND CORONAVIRUS



APR 2

#CoronavirusSeries
#PoliticsandHealth

FEATURED SPEAKERS

Eduardo Gomez

ASSOCIATE PROFESSOR, COLLEGE OF HEALTH AT LEHIGH UNIVERSITY



@Eduardo_J_Gomez

Jennifer Grodsky

VICE PRESIDENT FOR FEDERAL RELATIONS, BOSTON UNIVERSITY



@BUFederal

David Jones

ASSOCIATE PROFESSOR, HEALTH LAW, POLICY & MANAGEMENT, BOSTON UNIVERSITY SCHOOL OF PUBLIC HEALTH



@dklinejones

Daniel E. Dawes

DIRECTOR, SATCHER HEALTH LEADERSHIP INSTITUTE, AND ASSOCIATE PROFESSOR, MOREHOUSE SCHOOL OF MEDICINE



@DanielEDawes

Our response to the coronavirus pandemic has been shaped largely by the day-to-day mechanics of politics and policies. This seminar will explore how politics affect our ability to respond both in short and long term to a public health crisis and the various opportunities and challenges we face.

Our Coronavirus Seminar Series will address different aspects of the coronavirus pandemic, bringing together experts to discuss the causes and consequences of this global pandemic. The seminars aim to provide our community and the public with state-of-the-science information about the pandemic and its intersection with public health and keep us all connected to one another during this time.

Suggested Posts on Social Media

TWITTER

The response to the #coronavirus pandemic has been shaped by politics and policy. Join us Thursday to explore the opportunities and challenges of politics in the response to a public health crisis. #CoronavirusSeries #PoliticsandHealth
Register: bit.ly/CSPolitics

On Thursday, join experts from SPH, @BUFederal, @MSMEDU, and @LehighUHealth to discuss how politics and policy affect our ability to respond to a public health crisis. Register: bit.ly/CSPolitics #PoliticsandHealth #CoronavirusSeries @dklinejones, @danieledawes, @eduardo_j_gomez

As the third part of our online #CoronavirusSeries, we are exploring #PoliticsandHealth with experts from SPH, @BUFederal, @MSMEDU, and @LehighUHealth on Thursday. Join the conversation: bit.ly/CSPolitics @dklinejones, @danieledawes, @eduardo_j_gomez

As the #COVID19 outbreak evolves, politics have shaped the public health response. Join us Thursday to explore the opportunities and challenges in how politics affect public health response during crisis: bit.ly/CSPolitics #CoronavirusSeries #PoliticsandHealth

FACEBOOK/LINKEDIN

As the novel coronavirus outbreak continues to evolve, politics have shaped the response. Join us online on Thursday to gain important insights from experts from SPH, the College of Health at Lehigh University, Boston University Federal Relations, and the Morehouse School of Medicine about the opportunities and challenges we face in how politics affect public health response during crisis. Join the conversation: bit.ly/CSPolitics

As the third part of our online Coronavirus Seminar Series, join us on Thursday as we explore how politics and policies affect our ability to respond to a public health crisis. We will be joined by experts from SPH, the College of Health at Lehigh University, Boston University Federal Relations, and the Morehouse School of Medicine. Register to attend here: bit.ly/CSPolitics

Boston University School of Public Health leads public health conversations in its mission to improve the health of local, national, and global populations, particularly the disadvantaged, underserved, and vulnerable.

THINK. TEACH. DO. FOR THE HEALTH OF ALL.

To view our schedule of Signature Programs, please scan the QR code at right.



Engaging with Us on Social Media

Follow **@busph** and **tag** us in your stories and posts on all platforms

Post, like, and **retweet** content, using event hashtag and tagging speaker(s)

Share event information on **social media**

Send registration link to your **networks**



@BUSPH • @SandroGalea



@BUSPH



facebook.com/busph



linkedin.com/school/boston-university-school-of-public-health